

Product Information

News

June 21, 2005

SCBA FITTING TORQUE INSPECTION

When conducting an annual flow test, it is good practice to also inspect the SCBA for any loose fittings and tighten them according to the chart provided. An inspection can be performed by checking the fittings by hand (without tools) to ensure they are not loose and then tightening as necessary.

When using an adapter on a torque wrench, such as a crowfoot, the torque value listed in the table should be corrected according to the instructions provided by the torque wrench manufacturer.

For torque values on cylinder valve components, refer to the line drawings at the end of this PIN Article.

MMR SCBA Torque Specifications
Inch-Pound Torques

Component Requiring Torque	Part Number	Torque Value
First stage regulator		
Calibration locknut (adjusting screw)	490605	100 in-lbs
Filter plug	488818	80 - 100 in-lbs
First-stage backplate bolts	634994	30 - 40 in-lbs
High-pressure hose alarm	804382 or 10037954	100 - 140 in-lbs
High-pressure hose stainless pins	495929	10 - 15 in-lbs
Harness gauge hose to regulator	10004650 or 10040239	100 - 140 in-lbs
Pressure gauge adapter to hose	495763	50 - 60 in-lbs
Pressure gauge to adapter or Quick-Fill block	495763 or 495769	100 - 300 in-lbs
Quick-Fill gauge line		
Pressure hose to Quick-Fill block	495769	50 - 60 in-lbs
MMR Second-stage regulator - 1/4 turn		
Bypass locknut	488811	35 - 45 in-lbs
Shut-off base	803135	10 - 15 in-lbs
Cylinder Valve		
Current packing gland with valve open	488862	85 - 105 in-lbs
Prior packing gland with valve open	14437	120 - 140 in-lbs



For More Information: Call (1-800-MSA-2222) or Visit Our Website at (www.MSAnet.com)



Be Sure.
Choose MSA.

MINE SAFETY APPLIANCES COMPANY
PITTSBURGH, PENNSYLVANIA, U.S.A. 15230

TORQUE INSPECTION

MMR SCBA Torque Specifications Foot-Pound Torques

Component Requiring Torque	Part Number	Torque Value
Quick-Fill (gauge line)		
Quick-Fill coupling	485070	70 - 75 ft-lbs
Quick-Fill (belt-mounted)		
Quick-Fill coupling	485070	70 - 75 ft-lbs
Cylinder Valve		
Safety plug: 2216 psig	68550	50 - 53 ft-lbs
Safety plug: 3000 psig	495636	26 - 30 ft-lbs
Safety plug: 4500	473254	21 - 25 ft-lbs
Current cylinder valve into bottle	488894, 494884 488899	70 - 75 ft-lbs
Prior cylinder valve: 4500 psig (gray)	473225	70 - 75 ft-lbs
Prior cylinder valve: 2216 psig (black)	473664	70 - 75 ft-lbs
Prior cylinder valve: 3000 psig	494883	70 - 75 ft-lbs
Prior cylinder valve: 2216 brass into composite	460320	45 - 50 ft-lbs
Prior cylinder valve: 2216 brass into steel	94007	90 - 100 ft-lbs

BMR SCBA Torque Specifications Inch-Pound Torques

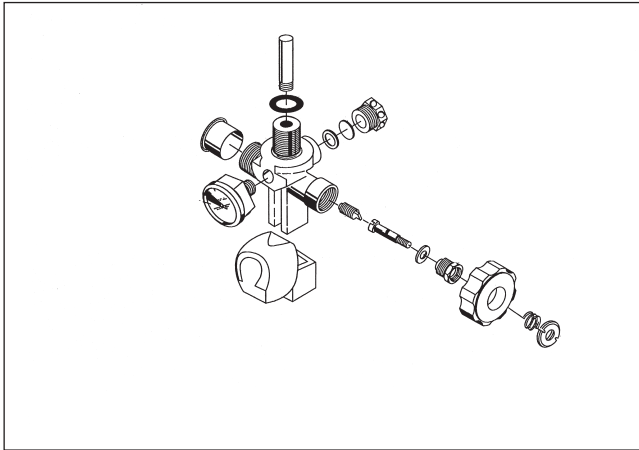
Component Requiring Torque	Part Number	Torque Value
Sleeve for low- and high-pressure BMR	474424	47.5 - 50 in-lbs
Reducing valve screw	42881	210 in-lbs
Bypass and/or main-line packing gland	14437, 473957	120 - 140 in-lbs
Quick-Acting main-line packing gland	482232	120 - 140 in-lbs
Quick-Acting main-line locknut	487061	15 - 20 in-lbs
Dual-Purpose housing	475876	140 - 180 in-lbs
Quick-Fill relief valve, low-pressure BMR	484892	72 - 96 in-lbs
Cylinder: Current packing gland with valve open	488862	85 - 105 in-lbs
Cylinder: Prior packing gland with valve open	14437	120 -140 in-lbs

BMR SCBA Torque Specifications Foot-Pound Torques

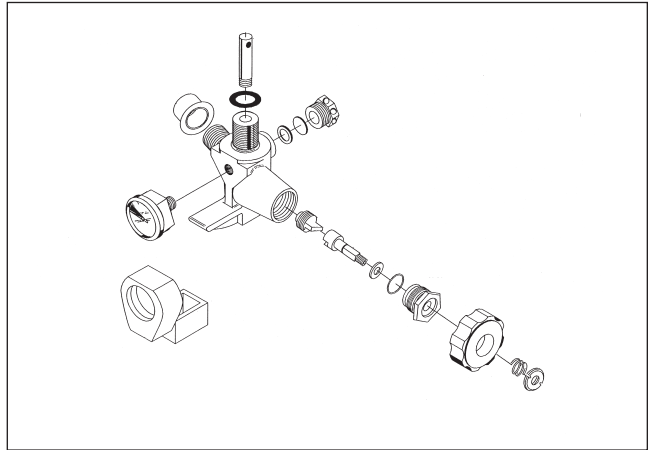
Component Requiring Torque	Part Number	Torque Value
Regulator body to reducing body nut	46337	33 - 37 ft-lbs
Quick-Fill coupling adapter	485070	70 - 75 ft-lbs
Cylinder Safety plug: 2216 psig	68550	50 - 53 ft-lbs
Cylinder Safety plug: 3000 psig	495636	26 - 30 ft-lbs
Cylinder Safety plug: 4500 psig	473254	21 - 25 ft-lbs
Current cylinder valve into bottle	488894, 494884 488899	70 - 75 ft-lbs
Prior cylinder valve: 4500 psig (gray)	473225	70 - 75 ft-lbs
Prior cylinder valve: 2216 psig (black)	473664	70 - 75 ft-lbs
Prior cylinder valve: 3000 psig	494883	70 - 75 ft-lbs
Prior cylinder valve: 2216 brass into composite	460320	45 - 50 ft-lbs
Prior cylinder valve: 2216 brass into steel	94007	90 - 100 ft-lbs

TORQUE INSPECTION

Prior Design



Current Design





For More Information: Call (1-800-MSA-2222) or Visit Our Website at (www.MSAnet.com)



Be Sure.
Choose MSA.

MINE SAFETY APPLIANCES COMPANY
PITTSBURGH, PENNSYLVANIA, U.S.A. 15230