

Product Information News

September 3, 2008

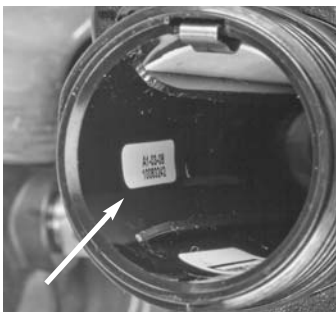
REPLACEMENT OF FIREHAWK® M7 PASS MODULES

When replacing either a FireHawk M7 Control Module or FireHawk M7 Power Module, it is important to use the correct revision module. Each module has a white identification label that indicates the revision.

LABEL LOCATION



On the FireHawk M7 Control Module, the label can be seen by pulling back the rubber boot on the side opposite of the yellow reset button.



On the FireHawk M7 Power Module, the label can be found inside the battery tube by removing the battery cap.

LABEL INFORMATION

The label will show an alphanumeric code that includes product revision and date code. An example of this is "A1-02-08". This example shows a product revision "A1" and date code "02-08".

PASS Module Revision Compatibility

At this time, only one combination of modules is not compatible. This combination is FireHawk M7 Control Module revision "A's" with a FireHawk M7 Power Module revision "B's". All other revision combinations of control and power modules are compatible with each other.

If non-compatible revisions are connected together, an error code "ERR116", will display on the FireHawk M7 Control Module LCD display during the start-up sequence. If this occurs, the modules must be disconnected and removed from service until the correct revision is installed.

When ordering a replacement FireHawk M7 Control Module or FireHawk M7 Power Module, specify the current revision control module and power module being used to ensure the proper compatibility.

To change out the FireHawk M7 Control Module or FireHawk M7 Power Module, refer to the FireHawk M7 Air Mask CARE manual for proper instructions.

If you have any questions, please contact MSA Customer Service at 1-877-672-3473 or 412-967-3000.

For More Information, call 1-800-MSA-2222 or Visit Our Website at www.MSAnet.com



MINE SAFETY APPLIANCES COMPANY
PITTSBURGH, PENNSYLVANIA, U.S.A. 15230