

# Product Information

## News

December 19, 2012

### SAFETY PLUG REPLACEMENT

The supplier of the shoulder mounted gauges used on the AirHawk® II, BlackHawk®, and FireHawk® M7 (less PASS version) Air Masks has redesigned the safety plug used in these gauges. The safety plug fits in the back of the gauge and is designed to relieve excess pressure should it develop inside the gauge housing.

MSA recommends that CARE technicians install the upgraded safety plug in the above air masks at the next scheduled annual flow test for these air masks. The safety plug replacement may be accomplished in seconds and there is no additional testing required.

AirHawk II, BlackHawk, and FireHawk M7 (less PASS version) Air Masks that received a new gauge in conjunction with the November 30, 2012 User Notice, are already equipped with the upgraded safety plug. The upgraded safety plug is blue in color and the old safety plug is black.

To order upgraded safety plugs, fax the attached order form to MSA Customer Service. A special reusable removal tool is needed to remove the safety plug and may be ordered as well. The safety plugs and removal tool are free of charge.

CARE Centers may order the safety plugs as they become necessary over the next year. Only MSA CARE certified repair technicians may replace the safety plug.

#### Safety Plug Installation Instructions

1. Inspect the rear of the gauge (with guard in place) to identify current gauge plug. If gauge plug is black (this can be seen through the guard hole), continue with the following steps below. If the gauge plug is blue, it has already been replaced and no further action is required.



2. Ensure system is de-pressurized and roll gauge guard back to expose rear of gauge.



3. Carefully remove black gauge plug using Plug Disassembling Tool (P/N 10146831).



4. Wipe the recessed surface with a clean, dry cloth to remove any debris.



For More Information, call 1-800-MSA-2222 or Visit Our Website at [www.MSAnet.com](http://www.MSAnet.com)

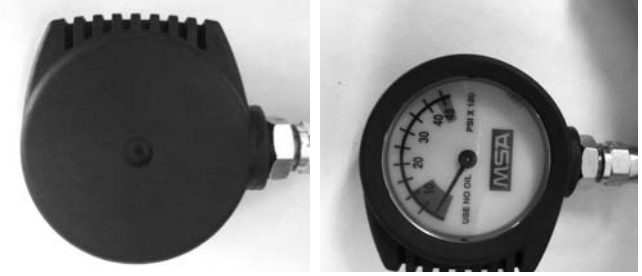
## SAFETY GAUGE REPLACEMENT

5. Insert blue gauge plug (P/N 10146007) and press in firmly with thumb.



**NOTE:** Make sure to press around entire perimeter of gauge plug.

6. Replace boot to its original position.



7. Discard the old safety plug.