

Hose Assemblies: AirHawk II[®] Air Mask

MAINTENANCE AND REPAIR



For More Information, call 1-800-MSA-2222 or Visit Our Website at www.MSAafety.com

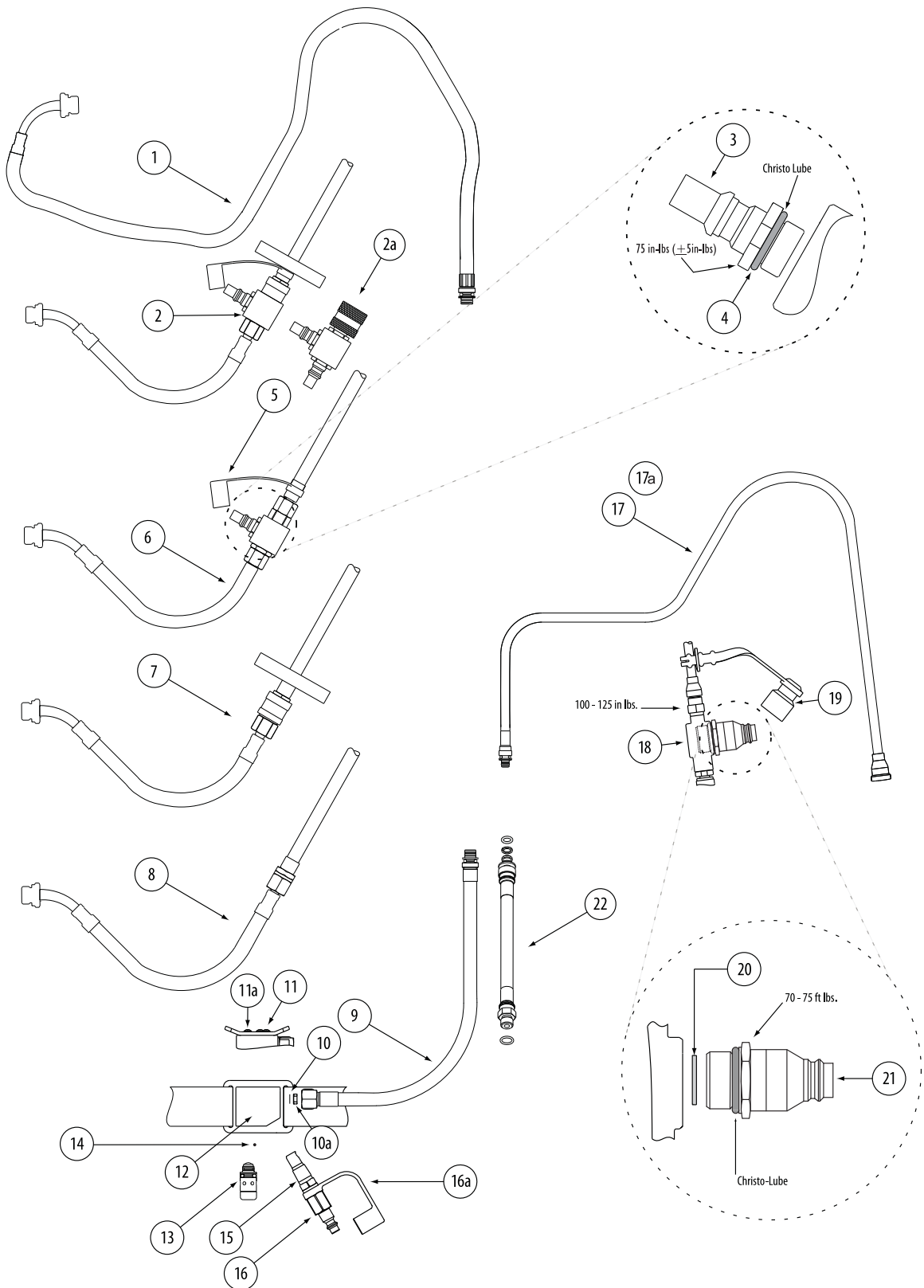
1000 Cranberry Woods Drive
Cranberry Twp. Pennsylvania, U.S.A. 16066

HOSE ASSEMBLIES PARTS LIST

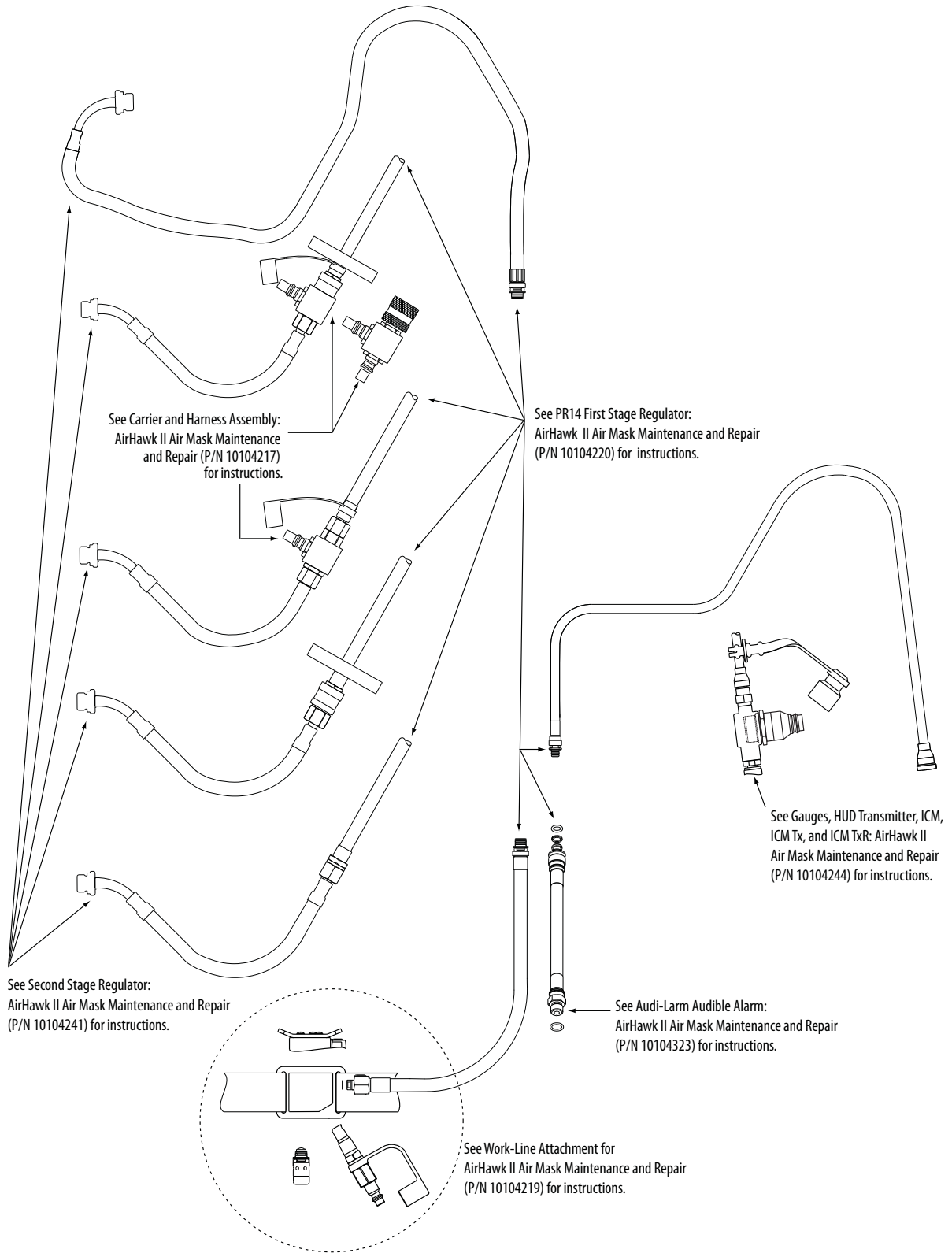
Item	P/N	Description
1	10089107	Intermediate Pressure Hose, Single*
2	10032438	Single Quick-Connect ExtendAire Manifold Assembly
2a	10032439	Double Quick-Connect ExtendAire Manifold Assembly
3	637945	Snap-Tite Aluminum Plug (for ExendAire System)
4	634669	O-ring
5	813035	ExtendAire Dust Cover
6	10051884	Intermediate Pressure Hose, ExtendAire System*
7	10051883	Quick-Connect System, Intermediate Pressure Hose*
8	10051882	Threaded Intermediate Pressure Hose*
9	10087239	PR14 Hose Assembly
10	10048620	Screen
10a	10048631	Screen Retainer
11	10044300	Plate
11a	10044301	Screw (3 required)
12	10086439	Work-Line Assembly w/ Snap-Tite Aluminum Plug
	10086440	Work-Line Assembly w/ Hansen SST Plug
	10086441	Work-Line Assembly w/ Hansen Brass Plug
	10086442	Work-Line Assembly w/ Foster Steel Plug
	10086443	Work-Line Assembly w/ Snap-Tite Locking Aluminum Plug
	10086444	Work-Line Assembly w/ Foster SST Plug
13	10053426	Pressure Relief Valve*
14	10086879	Dowel Pin
15	630326	Check Valve
16	66274	Snap-Tite Aluminum Plug
	473502	Hansen SST Plug
	630313	Hansen Brass Plug
	55716	Foster Steel Plug
	479027	Snap-Tite Locking Aluminum Plug
	636460	Foster SST Plug
16a	813055	Dust Cover for P/N 66274
	634687	Dust Cover for P/N 473502
	486289	Dust Cover for P/Ns 55716, 479027, and 636460
17	10082852	High Pressure Gauge Hose*
17a	10083121	High Pressure Hose for Quick-Fill*
18	10003609	Quick-Fill Adapter (for use with Standard Gauge)
	10020475	Quick-Fill Adapter (for use with ICM Tx and ICM TxR)
19	801164	Dust Cover
20	485574	Filter
21	485070	Quick-Fill Adapter*
22	804382	High Pressure Hose* (Audi-Larm to PR14 First Stage Regulator)
23	63198	O-ring

* Includes Back-up and O-rings as needed.

HOSE ASSEMBLIES EXPLODED VIEW



HOSE ASSEMBLIES CROSS REFERENCE



HOSE ASSEMBLIES

Table of Contents

Parts List	2	Assembling the ExtendAire System.....	5
Exploded View	3	Assembling the Quick-Fill System	6
Cross Reference	4		
Disassembling the ExtendAire System	5		
Disassembling the Quick-Fill System	5		

DISASSEMBLY

Disassembling the ExtendAire System

1. Secure the ExtendAire manifold in a vise.

NOTE: Use protective sleeves on the jaws of the vise.

2. Use a 3/4" deep well socket to unscrew the Snap-Tite aluminum plug.



NOTE: Applying a light downward pressure to the head of the socket wrench with your free hand during removal will better secure the socket to the Snap-Tite aluminum plug.

3. Use the o-ring removal tool to remove the o-ring.



NOTE: Be careful not to scratch the o-ring groove.

- a. Discard the o-ring.

Disassembling the Quick-Fill System

1. Secure the Quick-Fill manifold in a vise.

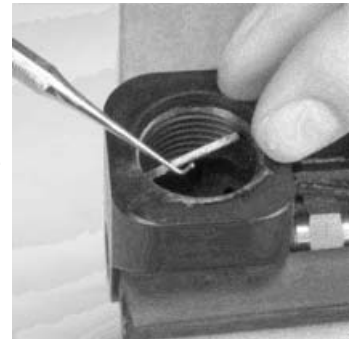
NOTE: Use protective sleeves on the jaws of the vise.

2. Use a 1" deep well socket to unscrew the Quick-Fill adapter.

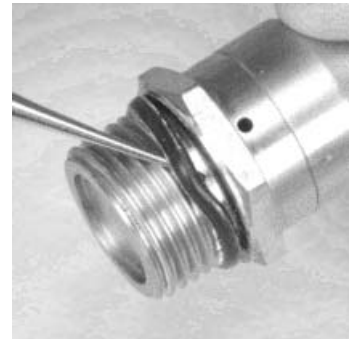


NOTE: Applying a light downward pressure to the head of the socket wrench with your free hand during removal will better secure the socket to the Quick-Fill adapter.

3. Use the o-ring removal tool to remove the filter.



4. Use the o-ring removal tool to remove the o-ring.



NOTE: Be careful not to scratch the o-ring groove.

- a. Discard the o-ring.

REASSEMBLY

Assembling the ExtendAire System

Single Quick-Connect ExtendAire Manifold Assembly	10032438
Double Quick-Connect ExtendAire Manifold Assembly	10032439
Snap-Tite Aluminum Plug (for ExtendAire System)	637945
O-Ring	634669
ExtendAire Dust Cover	813035
Christo-Lube	604070

1. Install a new Snap-Tite aluminum plug.
 - a. Secure the ExtendAire manifold in a vise.

NOTE: Use protective sleeves on the jaws of the vise.

2. Install a new o-ring.

HOSE ASSEMBLIES

- a. Protect the threads with tape or paper.



- b. Lightly lubricate a new o-ring with Christo-Lube.

- c. Install the o-ring.



- d. Remove the thread protector.



3. Screw the Snap-Tite aluminum plug into the manifold by hand.

4. Use the inch-pound torque wrench and 3/4" deep well socket to tighten to 75 in-lbs (+/- 5 in-lbs).



NOTE: Applying light downward pressure to the head of the torque wrench with your free hand during installation will better secure the socket to the Snap-Tite aluminum plug.

Assembling the Quick-Fill System

Quick-Fill Adapter (for use with Standard Gauge)	10003609
Quick-Fill Adapter (for use with ICM Tx & ICM TxR)	10020475
Dust Cover	801164
Quick-Fill Adapter (w/ O-ring)	485070
Filter	485574
Christo-Lube Lubricant	604070

1. Install a new Quick-Fill Adapter
 - a. Secure the Quick-Fill manifold in a vise.

NOTE: Use protective sleeves on the jaws of the vise.

2. If necessary, install a new o-ring.
 - a. Protect the threads with tape or paper.
 - b. Lightly lubricate a new o-ring with Christo-Lube.

- c. Install the o-ring.



- d. Remove the thread protector.

3. Install the filter.



4. Screw the Quick-Fill adapter into the manifold by hand.

HOSE ASSEMBLIES

5. Use the foot-pound torque wrench and 1" deep well socket to tighten to 70–75 ft lbs.

NOTE: Applying light downward pressure to the head of the socket wrench with your free hand during installation will better secure the socket to the Quick-Fill adapter.



NOTE: Ensure that the air mask passes annual and monthly tightness and function tests. (See **P/N 10104216 INTRODUCTION, AirHawk II Air Mask Maintenance Repair Instructions**)



For More Information, call 1-800-MSA-2222 or Visit Our Website at www.MSAafety.com

1000 Cranberry Woods Drive
Cranberry Twp. Pennsylvania, U.S.A. 16066
