

Ultra Elite[®] Facepiece

MAINTENANCE AND REPAIR

For More Information, call 1-800-MSA-2222 or Visit Our Website at www.MSAnet.com



**MINE SAFETY APPLIANCES COMPANY
PITTSBURGH, PENNSYLVANIA, U.S.A. 15230**

ULTRA ELITE FACEPIECE

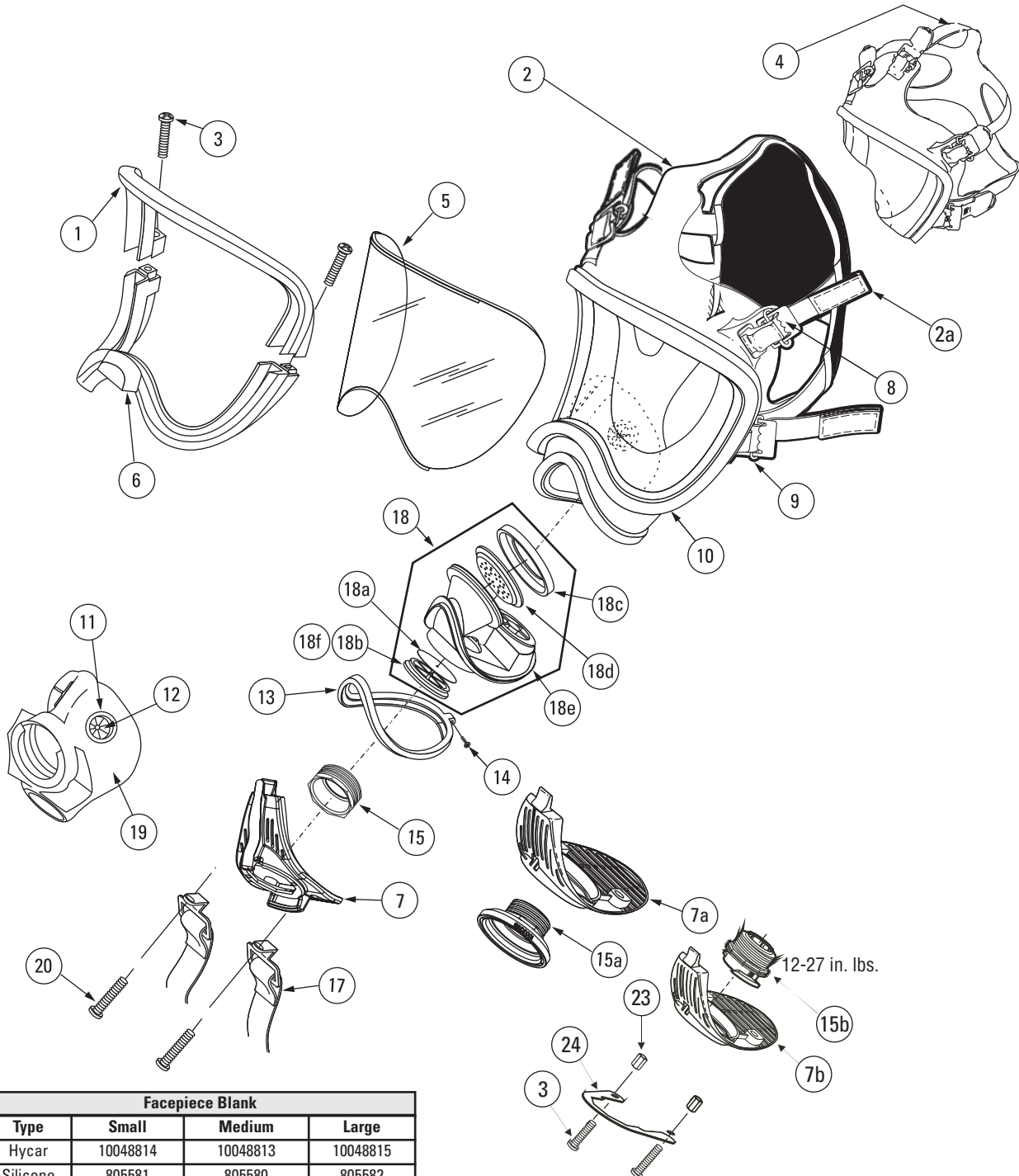
1	804804	Upper Lens Ring
2	10031102	Speed-ON Head Harness Assembly
2a	10031105	Speed-ON Head Harness Straps
3	804806	1/4 Turn Screw Kit (4 Req'd)
4	817262	Rubber Head Harness
5	805020	Lens Super Hardcoat
6	804805	Lower Lens Ring
7	10034500	Slide Cover
7a	10033115	Component Housing Cover (Push-to-Connect)
7b	804819	Component Housing Cover (1/4 Turn)
8	494297	Buckles (2 Req'd)
9	804807	Buckle Ass'y with D-Ring (2 Req'd)
10	See Chart	Facepiece Blank
11	804822	Valve Seat (2 Req'd)
12	804823	Valve Disc (2 Req'd)
13	804811	Component Housing Ring
14	804812	Screw Kit
15	10018621	Slide Adapter Ass'y
15a	10033115	Push-To-Connect Adapter Ass'y
15b	813556	1/4 Turn Adapter Ass'y
17	804829	Neckstrap
18	815604	Component Housing Assembly (Complete)
18a	804813	Inlet Disc
18b	804814	Valve Spider (1/4 Turn)
18c	804808	Speaking Diaphragm Retainer
18d	804809	Speaking Diaphragm
18e	815605	Component Housing with Exhalation Valve Kits
	818107	Retaining Bar Spring Kit (not shown)
	814459	Exhalation Valve (not shown)
18f	805011	Valve Spider (Firehawk)
19	Nosecup Assembly (with valves)	
19c	495188	Medium, Black
19d	495189	Large, Black
19e	804638	Spectacle Kit
20	804821	Screw Kit (2 Req'd)
23	637865	Spacer (1/4 Turn)
24	813543	Retaining Ring (1/4 Turn)
	10037791	NightFighter Bracket (not shown)

ULTRA ELITE FACEPIECE

Ultra Elite®

pressure demand facepiece NFPA

Facepiece Components



Facepiece Blank			
Type	Small	Medium	Large
Hycar	10048814	10048813	10048815
Silicone	805581	805580	805582

ULTRA ELITE FACEPIECE

CLEANING AND DISINFECTING

Depending on the cleaning policy adopted, either a designated person or the user should clean each device after each use. ANSI standards suggest that users should be trained in the cleaning procedure. Confidence Plus Cleaning Solution (P/N 10009971) from MSA is recommended. It cleans and disinfects in one operation. It retains its germicidal efficiency in hard water to inhibit the growth of bacteria. It will not deteriorate rubber, plastic, glass, or metal parts. Refer to label for user instructions.

⚠ CAUTION

- **DO NOT use any cleaning substances that can or might attack any part of the apparatus.**
 - **Alcohol should not be used as a germicide because it may deteriorate rubber parts.**
 - **If not rinsed thoroughly, cleaning agent residue may irritate the wearer's skin.**
1. Preparing Solution
 - a. Follow the instructions with the Confidence Plus Cleaning Solution.
 - b. If the Confidence Plus Cleaning Solution is not used, wash in a mild cleaning solution, rinse thoroughly, and submerge in a germicide solution for the manufacturer's recommended time.
 2. Clean and Disinfect the Facepiece
 - a. Remove the mask mounted regulator from the facepiece.
 - b. Unthread the thumb screw of NightFighter Heads-Up Display System receiver Voicemitter Assembly, slide the receiver from facepiece bracket.
 - c. Thoroughly wash the facepiece (and nose cup) in the cleaning solution. A soft brush or sponge can be used to clean the soiled facepiece.
 - d. Rinse the facepiece and components in clean, warm (110°F) water (preferably running and drained).
 - e. Clean the pressure-demand exhalation valve by pressing in on the stem with a blunt object and flushing with clean water.
 - f. Allow the facepiece to air dry. Do not dry the parts by placing them near a heater or in direct sunlight. The rubber will deteriorate.
 - g. Operate the exhalation valve by hand to be sure it works properly.
- Note:** Do not force-dry the parts by placing them in a heater or in direct sunlight. The rubber will deteriorate. When the facepiece is thoroughly dry, store the facepiece in the plastic bag that it was shipped in.
3. In general, only the facepiece requires cleaning and disinfecting after each use.
 4. Re-attach NightFighter Heads-Up Display System Receiver and Voicemitter Assembly.
 - a. Slide receiver onto facepiece bracket.

- b. Finger-tighten thumb screw.
5. Thoroughly dry the facepiece and regulator after cleaning and disinfecting. The facepiece can trap water, which could enter the regulator.

REMOVING THE SPEED-ON® HEAD HARNESS

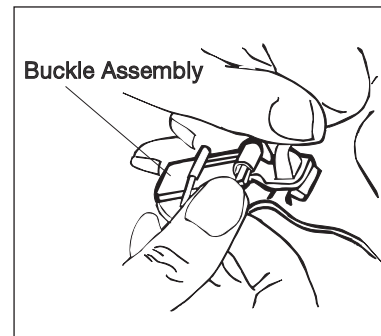
1. To remove a damaged Speed-ON Head Harness from the facepiece, lay the facepiece on a table or other flat surface.
2. To remove a damaged rubber head strap from the facepiece, lay the facepiece on a table or other flat surface.
 - a. Grasp the facepiece lug with the thumb and forefinger of one hand. Grasp the headstrap metal buckle with the thumb and forefinger of the other hand.
 - b. Lift the metal buckle up with your thumb as you stretch the facepiece lug.
 - c. Turn the facepiece and switch hands to pry up on the other side of the metal buckle.
 - d. Pull the facepiece lug out of the metal buckle.
 - e. Repeat steps a through d for each remaining strap surface.
3. To remove the bottom buckles, pull the back of the buckle away from the rubber strap and pull slightly so the rubber harness end-tab is at the buckle.
4. Fold the end-tab sides together, then slide each tab through its buckle.
5. Repeat steps 3 and 4 for the other buckle.

CLEANING SPEED-ON HEAD HARNESS

Machine wash in warm water (maximum 120°F) with a mild detergent. Hang the harness in an open area to air-dry. Do not dry clean. Do not bleach or use abrasive cleaners. Do not fold or store when wet.

INSTALLING THE SPEED-ON HEAD HARNESS

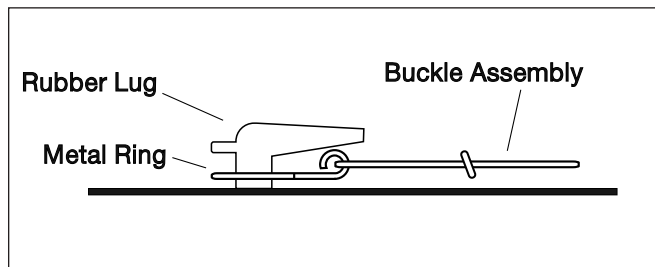
1. Install the harness strap buckles on the facepiece rubber lug at the crown and temple locations:
 - a. Insert the long tab end of the rubber lug into the metal ring.



- b. Pull the entire rubber lug through the metal ring.

ULTRA ELITE FACEPIECE

2. Refer to Kit 817088 Head Harness Installation instructions to attach the harness.



REMOVING THE COMPONENT HOUSING COVER

1. Remove the two component housing cover screws.



2. Remove the locking ring, if applicable.

3. Remove the component housing cover.
 - a. **For the 1/4 Turn Facepiece:** Lift up on the cover release hook located forward of the adapter assembly opening. Once the release is lifted, remove the cover by pulling it away from the housing. Tilt the cover and work it over one adapter bayonet at a time.
 - b. **For the Firehawk Slide Facepiece:** Remove the cover by pulling it away from the housing.

- c. **For the Firehawk Push-To-Connect Facepiece:** Pull the cover to release the retaining hook. With the cover between the hex flats and flange of the adapter, turn the adapter counter-clockwise to remove.



4. Unthread and remove the adapter assembly, if applicable. For the Firehawk Slide Facepiece, turn the cover upside down and backwards to use the cover as a wrench to unthread the adapter.

Note: Be careful that you do not damage internal parts of the component housing assembly (exhalation valve, spring, retainer, or speaking diaphragm) once the cover is removed.

MMR EXHALATION VALVE

⚠ CAUTION

Do not pull the spring retainer out of component housing slots. This could damage the component housing.

Removing the Spring and Spring Retainer

1. Slide the spring retainer to one side, then, carefully push center of the retainer down into the component housing freeing retainer from slots in the housing. Lift the retainer and the spring out of the component housing. Discard spring and spring retainer.

⚠ CAUTION

Be careful not to damage the slots or valve seat in the component housing. If either the slots or valve seat is damaged, the entire component housing must be replaced. Also be careful not to damage the soft rubber surface of the valve.

2. Inspect the slots in the component housing. If either appears to be damaged or distorted replace the damaged component housing.

Installing the Pressure Demand Exhalation Valve Spring and Spring Retainer

1. Place the new spring on the new (ivory) spring retainer. Place the free end of the spring over the exhalation valve boss.

Note: The retainer ends are angled. The shorter end goes down (toward the bottom part of the component housing). In this position, the part number on the retainer is on the left side facing the exhalation valve (down).

2. Insert one angled end of the spring retainer all the way into the slot on one side of the component housing. Place the other angled end of the retainer against the side of the housing above the slot, push the center of retainer down (above spring), then slide the retainer toward the bottom of the housing until the retainer snaps into slot.

⚠ CAUTION

Ensure spring retainer is secured in the sides of component housing. If the retainer does not remain secure the component housing must be replaced.

3. Check that the spring retainer is securely engaged in the slots of component housing.
 - a. Carefully lift up the center of retainer. (the retainer might snap again)
 - b. Make sure the retainer is fully engaged in the slots

ULTRA ELITE FACEPIECE

of component housing.

- c. Ensure that the spring is centered on the exhalation valve.
4. Inspect the slots in the component housing. If either appears to be damaged or distorted replace the damaged component housing.
5. Install Component Housing Cover

Note: If the cover hook does not snap in place, hand-tighten the adapter assembly clockwise until two corners of a flat line up with the two notches in the top of the component housing inlet. The cover should snap into place.

Don the facepiece and check the face-to-facepiece seal. Follow the Facepiece Fit Check procedures.

1. Don the facepiece.
2. Cycle exhalation valve by inhaling and exhaling six times before testing the face-to-facepiece seal.
3. To check for facepiece fit, hold the palm of your hand over the inlet connection and inhale. Hold your breath at least 10 seconds. The facepiece should collapse and stay collapsed against your face. If it does not, readjust the facepiece and test again. If this does not correct the leak, do not use the facepiece.
4. To test the exhalation valve, take a deep breath and hold it. Block the inlet connection with the palm of your hand and exhale. If the exhalation valve is stuck, you may feel a heavy rush of air around the facepiece. You may need to exhale sharply to open the valve.

INSTALLING THE ADAPTER ASSEMBLY

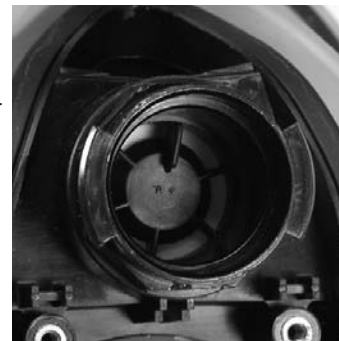
1. The 1/4 Turn Facepiece

- a. Holding the adapter assembly in one hand, rotate the slip nut so that the octagon flange on the slip nut lines up with the octagon flange on the adapter.



- b. Thread the adapter assembly into the facepiece. Use the spanner wrench to torque the adapter to 12-27 in.lbs. If necessary, continue to torque until the top flat on the octagon is horizontal.

- c. The bayonets must be in a horizontal orientation. If the bayonets are not horizontal, remove the adapter assembly and turn the slip nut.



- d. Re-install the adapter assembly so that the bayonets are horizontal when the adapter assembly is torqued 12-27 in.lbs.

2. The Firehawk Slide Facepiece

- a. Thread the slide adapter into the component housing, handtight.
- b. Use the component housing cover to tighten the adapter so that the next hex flat is aligned with the two index marks near the top of the component housing.

3. The Firehawk Push-To-Connect Facepiece

- a. With the cover between the hex flats and flange of the adapter, thread the adapter into the component housing.



- b. Insert the tab on the cover into the slot in the lens ring.
- c. Tighten the adapter so that the top hex flat is horizontal.
- d. Press the cover until the retaining hook snaps into place.

INSTALLING THE COMPONENT HOUSING COVER

1. Place the component housing cover over the adapter assembly. Tilt and rotate the cover to work it over one bayonet at a time, if applicable.
2. Insert the tab on the cover into the slot in the lens ring.
3. Press in on the front of the cover until the cover hook snaps in place.
4. Install the locking ring by sliding it into the groove on the adapter, if applicable. (Do not slide it into the space between the slip nut flange and the adapter flange.)
5. Place the spacers in the cover sockets under the locking ring, if applicable.

ULTRA ELITE FACEPIECE

6. Install the phillips screws and tighten.
7. Verify each of the following features.
 - a. The adapter bayonets are locked into a horizontal position, if applicable, and CANNOT be rotated.
 - b. The slip nut is threaded completely into the facepiece and locked securely, if applicable. It CANNOT be rotated.
 - c. The metal locking ring is locked into position, if applicable, and CANNOT be rotated.
 - d. There is no loose play in the assembly of parts.
7. Don the facepiece and check the face-to-facepiece seal. Follow the Facepiece Fit Check.

REMOVING THE FACEPIECE LENS AND RING

⚠ CAUTION

Keep the protective papers on the lens until the lens is completely assembled in the facepiece.

Note: Remove the adapter assembly and component housing cover.

1. Use a phillips screwdriver to loosen and remove the screw from each side of the facepiece lens retaining ring.



2. Remove the upper and lower lens retaining rings.



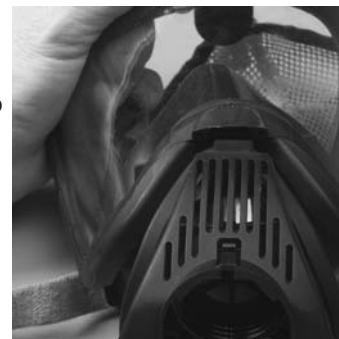
3. Fold the facepiece flange rubber back and pull the lens out of the groove.

INSTALLING THE FACEPIECE LENS AND RING

1. Remove any dirt, lens fragments, or other debris from the groove.
2. Line up the new lens center-line marks (top and bottom) with the facepiece center-line mark. Insert the top of the lens into the groove. Work the facepiece rubber flange around the lens to fully seat the lens in the groove. When installed correctly, the bottom lens center-line mark lines up with the bottom facepiece center-line mark.
3. Moisten the facepiece lens groove and the inside of the housing ring.



4. Install the bottom ring. Insert the tab at the top of the component housing into the slot at the bottom center of the lower lens ring. The tab should snap into place.



5. Line up the top lens ring center-line with the facepiece rubber flange center-line mark. Press the ring into place.
6. Press the ring halves together at the top and bottom of the facepiece so that the ends mate.
7. Install a screw on each side. Start the screws. They should thread easily. If not, remove and reinstall the screws to avoid cross-threading. Keep hand pressure on both ring halves.
8. As the ring halves come together, alternate tightening the left and right screws to be sure the rings seat completely on the rubber flange.

⚠ CAUTION

Do not over-tighten. Rubber must not show between the lens ring ends at the joint. If this happens, reassemble.

9. Remove all lens protective papers from the new lens.
10. Re-install the component housing and the adapter assembly.
11. Don the facepiece and check the face-to-facepiece seal. Follow the Facepiece Fit Check.
12. Install a cover lens to protect the facepiece polycarbonate lens during storage.

ULTRA ELITE FACEPIECE

REMOVING THE COMPONENT HOUSING ASSEMBLY

Note: Remove the adapter assembly and the component housing cover.

1. Use a small phillips screwdriver to remove the component housing screw.

2. Grasp the ring with the thumb and forefinger of each hand. Gently spread the ring halves apart at the bottom.



3. When the facepiece rubber is out of the ring groove, lift the ring up away from the facepiece. You may need to pull the housing down slightly to allow enough room to remove the ring from between the housing and the lower lens ring.



4. Remove the facepiece rubber from the component housing and pull the housing and nose cup (if installed) out of the facepiece.

INSTALLING THE COMPONENT HOUSING ASSEMBLY

1. Slide the housing into the front of the facepiece.

2. Starting at the top (narrow end) of the housing, place the housing in the facepiece groove. Work the rubber all the way around the housing. Check that the housing is completely captured inside the groove and the center-lines are lined up.



3. Moisten the facepiece housing area and the inside of the housing ring.

4. Insert the narrow end of the ring into the space between the lower lens ring and the facepiece housing area.

5. Line up the component housing ring mark with the facepiece center-line.



6. Starting at the top, work the housing ring down on the facepiece to capture the facepiece rubber in the ring groove. Work your way down each side of the ring until the facepiece rubber is completely captured inside the ring.



7. Gently squeeze the ring halves together at the bottom of the housing. Watch the facepiece rubber at the top as you do this. If you see any bulges or wrinkles in the facepiece rubber, it is not captured in the groove. Rework the ring around the facepiece rubber until there are no bulges or wrinkles.

⚠ WARNING

Bulges or wrinkles mean that the facepiece rubber is not seated correctly in the ring. Re-install the ring to seat it correctly. Failure to follow this warning can cause the facepiece to leak and result in serious personal injury or death.

8. When the housing ring appears to be seated, grasp the outside of the ring and the inside of the housing at the top between your thumb and forefinger and squeeze them together. Then do the same with the ring halves at the bottom.

ULTRA ELITE FACEPIECE

9. Install the screw and tighten using a small phillips screwdriver.



⚠ CAUTION

Rubber must not extrude between the component housing ring ends at the joint. If this happens, reassemble.

10. Re-install the nose cup or air baffle (if used) in the facepiece.
11. Re-install the component housing cover and adapter assembly.
12. Don the facepiece and check the face-to-facepiece seal. Follow the Facepiece Fit Check.

REPLACING THE SPEAKING DIAPHRAGM

1. Remove the nose cup or air baffle (if installed) from inside the facepiece.



2. Unscrew and remove the speaking diaphragm retaining ring.

3. Turn the facepiece upside down and shake out the metal speaking diaphragm and gasket assembly.
4. Check the speaking diaphragm and gasket assembly for damage. Replace it if it is worn or damaged.
5. Be sure that the gasket is on the diaphragm assembly. Place the diaphragm in the retaining ring. Be sure that the gasket side of the speaking diaphragm will be facing the component housing.
6. Replace the retaining ring and hand-tighten.
7. Re-install the nose cup or air baffle (if used) in the facepiece.
8. Don the facepiece and check the face-to-facepiece seal. Follow the Facepiece Fit Check.

REPLACING THE INLET GASKET AND DISC VALVE

1. Remove the component housing cover and the adapter assembly.
2. Remove the disc from the gasket and inspect both for wear. The disc should be very soft and pliable. Install a new disc valve if it is damaged or hardened.
3. To install the inhalation disc valve:
 - a. *Gently*, stretch the hole in the center of the disc valve over the gasket stem.



- b. Note that the inlet gasket has a groove around its inside.

- c. With the pull-tab facing you, insert the gasket into the facepiece at an angle so that its groove captures the housing rim. The lower lip on the gasket must be placed under the rim in the component housing.

Note: It may be necessary to bend the gasket slightly to work the groove under the rim all the way around. When installed correctly, the gasket will lay flat in the housing, and none of the spokes will be bent.

4. Re-install the adapter assembly.
5. Don the facepiece and check the face-to-facepiece seal. Follow the Facepiece Fit Check.

ULTRA ELITE FACEPIECE COMPONENT HOUSING INSPECTION

Note: Ultra Elite Facepieces can be identified by a mold-embled emblem in the forehead area containing the word "Ultra Elite".

See User's Instructions for additional illustrations and information.

Inspect the component housing on Ultra Elite Facepieces manufactured from July to December 2003 using the procedure below.

To locate the date code:

1. Hold the Ultra Elite Facepiece in one hand.
2. Gently pull the chin cup toward you.
3. Under a good light source, locate the stamped circle on the inside, right side of the facepiece.

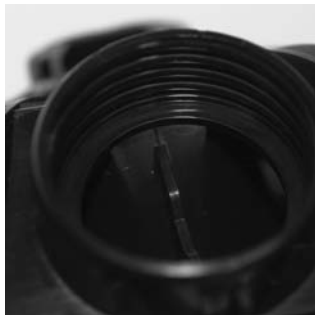
ULTRA ELITE FACEPIECE

4. If a dot is visible in either the third or fourth quadrant of the "03" section and none in the "04" section, the facepiece is subject to the Inspection Advisory. Proceed with the inspection as follows:

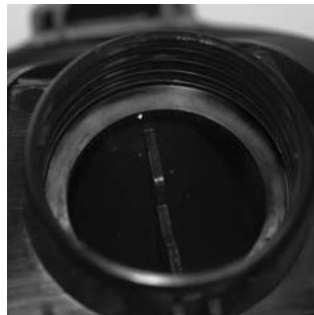
Inspection Procedure: (see illustration)

1. For Air Purifying and Pressure Demand facepieces (except MMR and Firehawk), unthread and remove the adapter assembly. Component housing cover removal is not necessary.
2. For MMR and Firehawk™ slide-to-connect facepieces:
 - a. Remove the two component housing cover screws and the neckstrap.
 - b. Remove the locking ring (MMR only).
 - c. Lift up on the cover release hook, located forward of the adapter assembly opening. With the release lifted, the cover can be removed by pulling it away from the housing. On MMR facepieces, tilt the cover and work it over one adapter bayonet at a time.
 - d. Unthread and remove the adapter.
3. For Firehawk push-to-connect (PTC) facepieces:
 - a. Remove the two component housing screws and the neckstrap.
 - b. Lift up on the cover release hook, located forward of the adapter assembly opening. With the release lifted, pull the cover away from the component housing so that it is between the hex flats and flange of the PTC adapter.
 - c. With the cover against the adapter flange, unthread the adapter from the component housing.
4. Pull the gasket (valve spider) out. Ensure that the white inlet disc valve remains attached to the gasket.
5. Inspect the flat sealing surface for dullness or discoloration. Refer to the photos below. Also, for reference, compare the thread finish to the sealing surface.

Note: For clearer photos, refer to this inspection advisory on MSA's website:
<http://www.msanet.com/msanorthamerica/msaunitedstates/USnoticeindex.html>



Normal



Discolored

6. If dullness, discoloration, cracks, or breaks are noted, do not use the facepiece. Call MSA Customer Service at 1-877-MSA-3473 to make arrangements to return the UltraElite Facepiece to MSA for repair.

7. If no discoloration, cracks, or breaks are noted, reassemble the facepiece as indicated below and return it to service.

Reassembly of Ultra Elite Component Housing Cover and Adapter

1. Gently stretch the hole in the center of the inlet disc valve over and onto the gasket stem.
2. With the pull-tab facing outward, insert the gasket into the facepiece at an angle so that the groove around the outer edge captures the housing rim. The lower lip on the gasket must be completely under the rim in the component housing.

Note: The gasket may need to be bent slightly to work the lip under the rim all the way around. When installed correctly, the gasket will lay flat in the housing and none of the spokes will be bent.

3. For Air Purifying and Pressure Demand facepieces (except MMR and Firehawk), reinstall the adapter assembly.
4. For MMR facepieces:
 - a. Holding the adapter assembly in one hand, rotate the slip nut so that the octagon flange on the slip nut lines up with the octagon flange on the adapter.
 - b. Thread the adapter assembly into the facepiece.
 - c. Using a torque wrench with the spanner wrench (PN 494261), torque the adapter to a minimum 12 inlbs. If necessary, continue to torque until the top flat on the octagon is horizontal with a maximum torque of 27 inlbs.
 - d. The bayonets must be in a horizontal orientation. If the bayonets are not horizontal, remove the adapter assembly and turn the slip nut to the next octagon flange alignment.
 - e. Re-install the adapter assembly so that the bayonets are horizontal when the adapter assembly is torqued 12 - 27 in-lbs.
 - f. Place the component housing cover over the adapter assembly. Tilt and rotate the cover to work it over one bayonet at a time.
 - g. Insert the tab on the cover into the slot in the lens ring.
 - h. Press in on the front of the cover until the cover hook snaps in place.
 - i. Install the locking ring by sliding it into the groove on the adapter. (Do not slide it into the space between the slip nut flange and the adapter flange.)
 - j. Place the neckstrap brackets and the spacers in the cover sockets under the locking ring.
 - k. Install the phillips screws and tighten.
 - l. Verify each of the following features.
 - i. The adapter bayonets are locked into a horizontal position and CANNOT be rotated.
 - ii. The slip nut is threaded completely into the face piece and locked securely. It CANNOT be rotated.
 - iii. The metal locking ring is locked into position and CANNOT be rotated.

ULTRA ELITE FACEPIECE

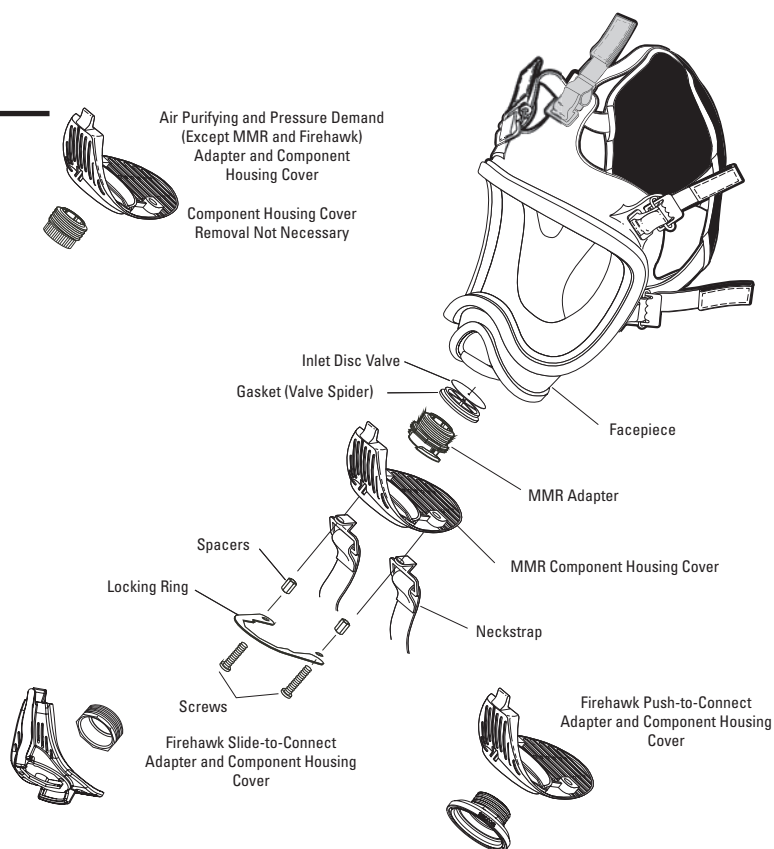
- iv. There is no loose play in the assembly of parts.
- 4. For Firehawk slide-to-connect facepieces.
 - a. Thread the adapter into the facepiece.
 - b. Tighten the adapter hand tight. Use the component housing cover to continue to tighten until the top flat on the octagon is horizontal.
 - c. Insert the tab on the component housing cover into the slot in the lens ring.
 - d. Press in on the front of the cover until the cover hook snaps in place.
 - e. Place the neckstrap brackets in the cover sockets.
 - f. Install and tighten the Phillips screws.
 - g. Verify that there is no loose play in the assembly of parts.
- 5. For Firehawk push-to-connect (PTC) facepieces:
 - a. Insert the component housing cover tab into the lens ring slot, leave the cover loose.
 - b. Place the PTC adapter through the facepiece component housing cover and thread the adapter assembly into the facepiece hand tight.
 - c. Continue to tighten until the top flat of the adapter octagon is horizontal.

Note: The octagon flats on the facepiece adapter must align with octagon flats of component housing.

- d. Press in on the front of the cover until the cover hook snaps into place.
- e. Place the neckstrap brackets into the cover sockets.
- f. Install the phillips screws and tighten.
- g. Verify that there is no loose play in the assembly of parts.
- 6. Don the facepiece and check the face-to-facepiece seal. Follow the facepiece fit check procedures in the user's instructions.

Note: For questions regarding this procedure, please contact MSA Customer Service at 1-877-MSA-3473.

Ultra Elite[®] Facepiece Components



ULTRA ELITE FACEPIECE

PUSH TO CONNECT (PTC) CONTENTS

P/N 10033115 PTC Adapter
P/N 637070 Screw (2)
P/N 490134 Spider Valve

BEFORE USE

- Read and understand these instructions before attempting to use this equipment.
- This air mask is to be used only by trained and qualified personnel.

INSTALLING THE PTC (PUSH TO CONNECT) ADAPTER ASSEMBLY AND COMPONENT HOUSING COVER

1. Insert facepiece component housing cover tab into lens ring slot, leave the cover loose.



2. Place the facepiece adapter through the facepiece component housing cover. Thread the adapter assembly into the facepiece.



3. Tighten facepiece adapter until the top flat on the octagon is horizontal.

Note: The octagon flats on the facepiece adapter must align with octagon flats of component housing.

4. Press in on the front of the cover until the cover hook snaps into place.



5. Place the neckstrap clips into the cover sockets. Install the new phillips screws and tighten.
6. Verify that there is no loose play in the assembly of parts.
7. Don the facepiece and check the face-to-facepiece seal. Follow the Facepiece Fit Check procedures in the Operation and Instructions Manual. For NFPA Firehawk (P/N 10023638) or WorkMask (P/N 10024090).

For More Information, call 1-800-MSA-2222 or Visit Our Website at www.MSAnet.com



MINE SAFETY APPLIANCES COMPANY
PITTSBURGH, PENNSYLVANIA, U.S.A. 15230