

The Safety Manager's Guide to
**LEADING EDGE
SELF-RETRACTING LIFELINES**

What is Leading Edge? Leading Edge is an application where in the event of a fall, the lanyard of the Self Retracting lifeline (or retractable type fall arrester) may come in contact with an exposed edge. In many scenarios, leading edge applications occur when the harness wearer is connected to an anchor point below their back D-ring, however it is possible when anchor points are overhead as well.

LEADING EDGE APPLICATION

Any type of at-height work, in which a fall potential exists over an edge. Leading Edge applications most commonly occur when tie off is at foot level, or even over head in some instances.



FOOT-LEVEL TIE OFF

When workers are connected to an anchor point at their feet.



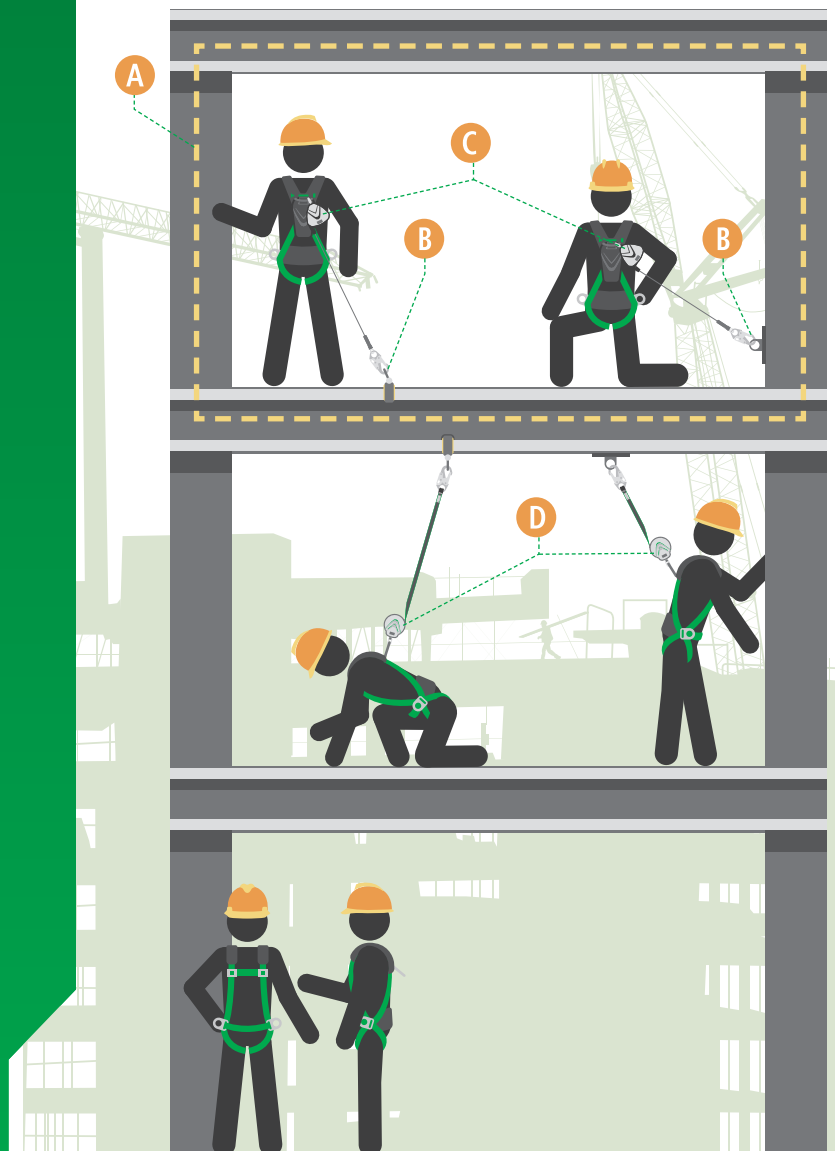
SRL-LE, HORIZONTAL SRL-LE

Interchangeable terms for leading edge self-retracting lifeline.



SRL, OVERHEAD SRL

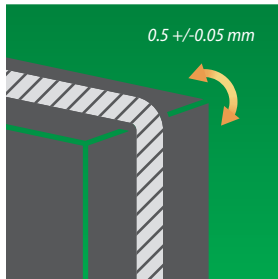
Interchangeable terms for traditional self-retracting lifelines used in applications other than leading edge. It is important to note that while all SRLs are rated to EN 360 for overhead use, only a subset of these will be Leading Edge SRLs.



Leading Edge TESTING & APPROVALS

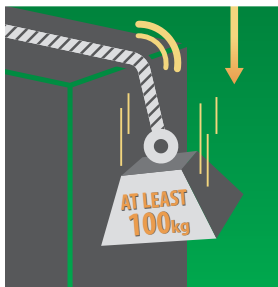
CNB/P/11.060, European coordination of notified bodies for PPE says that in order for an SRL to be labeled "LE", it must be:

TESTED ON A
STEEL EDGE,
WITH A RADIUS
00.5 +/-0.05 MM



AND

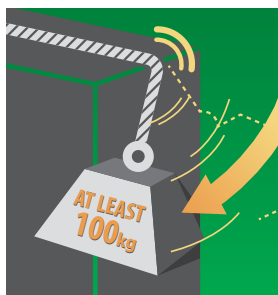
Meet certain requirements for:



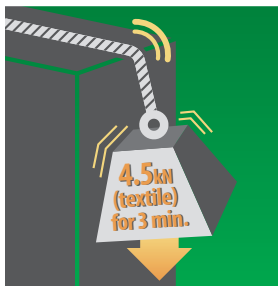
DYNAMIC
PERFORMANCE



DYNAMIC
STRENGTH



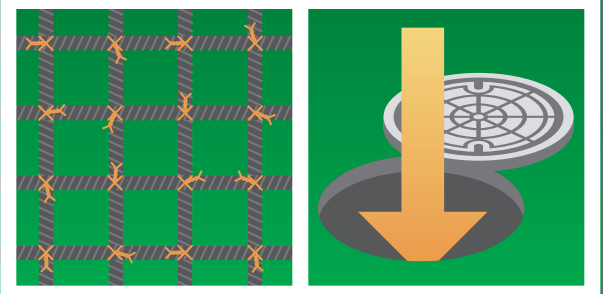
STATIC
STRENGTH



Overhead SRL vs. SRL-LE WHICH IS BEST?

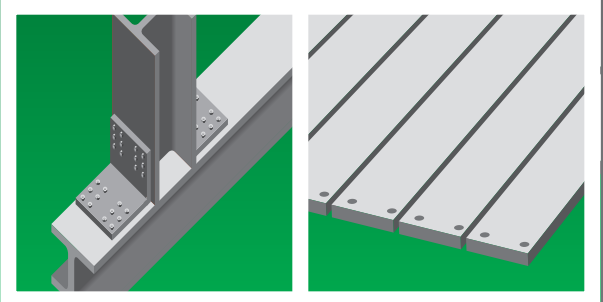
OVERHEAD SRL IS IDEAL FOR:

At-height work where there is no risk for the lifeline to come in contact with an edge in a fall event, for example climbing ladders or confined space entry.



SRL-LE IS ESSENTIAL FOR:

Leading edge applications. These applications are found in many industries, but commonly include steel erection and deck laying as a prime example.



If you aren't sure which type of SRL to choose, remember a leading edge SRL can cover a variety of applications and anchor points, whereas traditional SRLs may have some limitations in these areas.

DO YOU HAVE THE RIGHT FALL PROTECTION?

Learn more about MSA's leading edge solutions at www.MSAafety.com/leadingedgefallprotection.