

Logo customisation

Why to customise your helmet ?

- Use PPE as a **branding vector** for the company on site
- **Strengthen the pride of your workers** as a company or in a community
- **Promote the safety image** of your company
- **Spread messages** to the workers eg. "Think Safety"
- **Promote a specific event** such as "year of", "50 years of the company..."
- **Identify your workers** when they are operating on construction sites along with other contractors
- **Identify the particular status or function** of the wearer such as "Safety officer", "Team Manager", "Maintenance"
- **Identify** the first aid workers



Pad printing service

MSA integrated process includes made in France clichés/plates, ink mixture, production

- One sentence has been removed
- Top-quality printing, durable and weather-proven
- Up to 4 logos per helmet can be printed (front, rear, left, right). On V-Gard 500, logo on peak is also possible.
- Possible to print logo, pictures and text
- Minimum order quantities start with 20 helmets
- 2 colour technologies:
 - **Pantone**: solid colour or colour gradient, up to 8 colours per logo
 - **Image 2000™ Service**: unique feature of MSA Logo Express premium printing 4C process, you can even print pictures or very complicated logos, relevant using high colour. White background needed except on white shells.



MSA's highly skilled graphic artists will accurately blend your logo to give an outstanding rendering when it's printed across the curve of the shell!



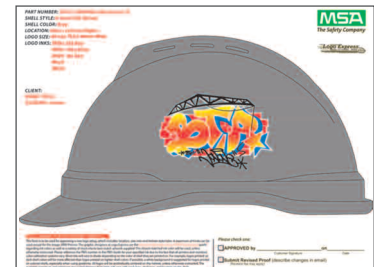
Logo Express easy process

For new logo:

1. Select your helmets
2. Send your vectorial logo (eps, ai, cdr) or high resolution bitmaps (bmp, jpg, tif) with the info on 4C or pantone colour code and logo size to your local distributor.
3. Approve as soon as possible the validation form your distributor will send you within 3 days.
4. MSA produces your logoed helmets within 10 working days (for helmet orders >320 pcs MSA has to confirm individually).

For existing logo:

1. Just place the order with your dedicated P/N (for each logo configuration a dedicated P/N)
2. MSA produces your logoed helmets within 10 working days (for helmet orders >320 pcs MSA has to confirm individually).



Validation form

Table with helmet models and dimensions per side

Models	Peak	Front	Sides	Rear
V-Gard	N/A	60 x 90 mm	60 x 90 mm	60 x 90 mm
V-Gard 200	N/A	60 x 90 mm	60 x 90 mm	60 x 90 mm
V-Gard 500	30 x 30 mm	60 x 90 mm	60 x 90 mm	30 x 80 mm
V-Gard 520	N/A	60 x 90 mm	60 x 90 mm	30 x 80 mm

Please contact us for any specific requests such as bigger dimensions or different locations than standard ones. MSA integrated Logo Express department can support you with their expertise.

Individual naming

MSA offers a front badge ID card holder option, identifying each worker on site. If you require individual naming MSA's cost effective solution is to use individual named stickers, allowing individual traceability of the PPE.

- Sticker adhesive and colorants preselected to ensure no long term effects on shell materials
- Minimum order quantity: 40 pieces (mixed names)

Part No	Description
GA90029	Sticker white (11,2 x 1,2 cm)
GA90025	Sticker transparent (11,2 x 1,2 cm) -not recommendaed for darker shell colours black, grey, blue, green etc.

Sticker approved with all MSA helmets during penetration and shocks tests, and after hot and cold conditioning.

How to proceed ?

1. Just **ask your local MSA contact** to get the Excel form and **provide us with the list** of your workers.
2. **You will receive** then the individual stickers easily applied by the end user when the helmet is delivered.



Names and information supplied covered by EU data protection directive.