



OSTER DIAMONDFORCE® SMOKELESS GRILL
CKSTGRLSLGY-DM

For product questions contact:

Sunbeam Consumer Service

USA : 1.800.334.0759

www.oster.com

© 2021 Sunbeam Products, Inc. All rights reserved. Distributed by
Sunbeam Products, Inc., Boca Raton, Florida 33431.



Safety



How to use



Cleaning



Warranty

Printed in China P.N. 921874 Rev A/NWL0001293814/ART0000921874
CKSTGRLSLGY-DM_21EM2 GCDS-OST-SL

www.oster.com

IMPORTANT SAFEGUARDS

When using electrical appliances, basic safety precautions should always be followed, including the following:

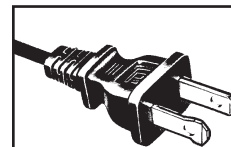
1. Read all Instructions before using this product.
2. This appliance generates heat during use. Do not touch hot surfaces. Use handles or knobs. Always protect your hands with non-slip oven mitts or similar.
3. To protect against electric shock, do not place or immerse cord, plugs, or appliance in water or other liquid.
4. This appliance is not intended for use by children or by persons with reduced physical, sensory, or mental capabilities, or lack of experience and knowledge. Close supervision is necessary when any appliance is used near children. Children should be supervised to ensure that they do not play with the appliance. Keep the appliance and its cord out of reach of children.
5. Unplug from outlet when not in use and before cleaning. Allow to cool before putting on or taking off parts, and before cleaning.
6. Do not operate any appliance with a damaged cord or plug or after the appliance malfunctions or has been damaged in any manner. Do not attempt to replace or splice a damaged cord. Return appliance to the manufacturer (see warranty) for examination, repair or adjustment.
7. The use of accessory attachments not recommended by the appliance manufacturer may cause injuries.
8. Do not use outdoors or for commercial purposes.
9. Do not let cord hang over edge of table or counter or touch hot surfaces.
10. Do not place on or near wet surfaces, or heat sources such as a hot gas or electric burner, or in a heated oven.
11. Extreme caution must be used when moving an appliance containing hot oil or other hot liquids.
12. Always attach plug to appliance first, then plug cord in the wall outlet. To disconnect, turn any control to OFF, then remove plug from wall outlet.
13. Do not use appliance for other than intended use. Misuse can cause injuries.
14. This appliance is not intended for deep frying foods.
15. Intended for household countertop use only. Keep 6 inches (152 mm) clear from the wall and on all sides. Always use appliance on a dry, stable, level surface.
16. Use caution when opening the lid during or after a cooking cycle. Escaping steam can cause burns.
17. The heating base is subject to residual heat from cooking cycle. Do not touch heating base immediately after cooking. Allow to cool before handling.
18. Models with detachable legs or handles only: Be sure that legs and handles are assembled and fastened properly. See assembly instructions.
19. To avoid a circuit overload, do not operate this appliance on the same circuit with another high wattage appliance.

20. Should appliance emit excessive smoke from cooking certain foods, reduce heat or unplug appliance until smoke subsides. Cover with supplied lid or other heat resistant cover if necessary. Ensure adequate ventilation.

SAVE THESE INSTRUCTIONS

HOUSEHOLD USE ONLY

POWER CORD INSTRUCTIONS:



POLARIZED PLUG

This appliance has a polarized plug, (one blade is wider than the other). As a safety feature to reduce the risk of electrical shock, this plug is intended to fit in a polarized outlet only one way. If the plug does not fit fully in the outlet, reverse the plug. If it still does not fit, contact a qualified electrician. Do not attempt to defeat this safety feature or modify the plug in any way. If the plug fits loosely into the AC outlet or if the AC outlet feels warm do not use that outlet.

A short power-supply cord or detachable power-supply cord is provided to reduce risks resulting from becoming entangled in or tripping over a longer cord. Longer detachable power-supply cords or extension cords are available and may be used if care is exercised in their use. If a long detachable power-supply cord or extension cord is used:

- a. The marked electrical rating of the detachable power-supply cord or extension cord should be at least as great as the electrical rating of the appliance;
- b. If the appliance is of the grounded type, the extension cord should be a grounding type 3-wire cord; and
- c. The longer cord should be arranged so that it will not drape over the counter top or table top where it can be pulled on by children or tripped over unintentionally.

Do not pull, twist or otherwise abuse the power cord.

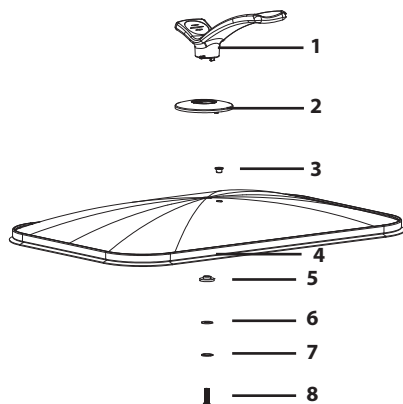
Do not wrap the power cord around the main body of the appliance during or after use.



Congratulations on your new Oster® Smokeless Grill with Diamondforce® nonstick technology!

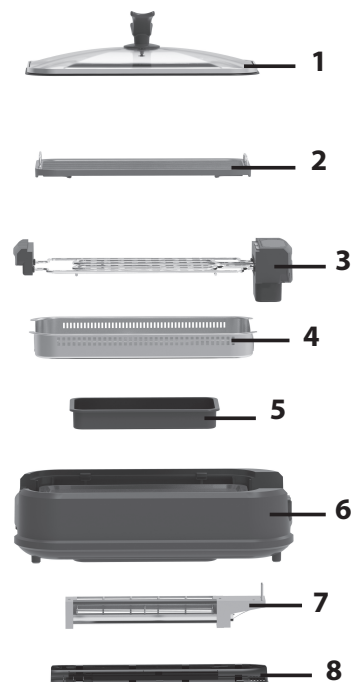
This smokeless grill has all of the tools you need to grill your favorite foods. Featuring a smoke-capture fan that circulates air for a less smokey experience, you can grill all of your favorite foods indoors with virtually no smoke. You will be cooking with Oster's Longest Lasting nonstick with Diamondforce® on the grill plate, meaning cleanup will be a breeze with its superior nonstick properties and dishwasher safe coating. We are excited for you to try our product, so to get the most out of your grill please read the following instructions carefully.

LID HANDLE ASSEMBLY



- | | |
|--------------------|-------------------|
| 1. Handle | 5. Plastic washer |
| 2. Handle base | 6. Metal washer |
| 3. Silicone gasket | 7. Spring washer |
| 4. Glass lid | 8. Screw |

UNIT ASSEMBLY



- | | |
|--------------------|--------------------|
| 1. Glass Lid | 5. Drip Tray |
| 2. Grill Plate | 6. Plastic Housing |
| 3. Heating Element | 7. Electric Fan |
| 4. Collection Pan | 8. Fan Cover |



4

www.oster.com

www.oster.com

5





HOW TO:

Lid Handle Assembly Instructions

Lid Handle Assembly Diagram shown on page 4.

1. Attach Silicone Gasket (3) under the handle base (2) if not already attached.
2. Remove Screw (8) from handle (1)
3. Insert Screw (8) through Spring Washer (7).
4. Place the Metal Washer (6) over the Spring Washer (7), then place the Plastic Washer (5) over the Metal Washer (6) with the embossing facing up.
5. Insert the Screw (8) and the washers through the bottom of the Glass Lid (4).
6. Place the Handle Base (2) on top of the Glass Lid (4). The Screw (8) should be through the Handle Base (2), and the Silicone Gasket (3) should be aligned to fit through the smaller hole of the lid (4).
7. Thread the Handle (1) onto the Screw (8) and tighten using a Phillips head screwdriver.

BEFORE FIRST USE

- Before using the appliance for the first time, remove and peel off any promotional materials and packaging materials, and check that the cooking plates are clean and free of dust.
- Wipe down the appliance with a clean damp cloth. Clean and dry the grill plate, drip tray and collection pan using the instructions found in the cleaning and care section.
- Do not wash or submerge heating element, electric fan, or appliance in water or other liquid.
- Clean the grill (See "Cleaning and care"). It is recommended to heat up the grill for about 10 minutes without any food in order to eliminate any grease that may have adhered during the manufacturing process. Ventilate the room during this period.

When your grill is heated for the first time, it may emit slight smoke or odor. This is normal with many heating appliances. This does not affect the safety of your appliance.

- Ensure the power cord is kept away from cooking surfaces at all times.

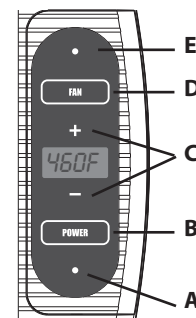
OPERATING INSTRUCTIONS

Unit Assembly diagram shown on page 5.

1. Place appliance on a clean, level surface that is heat resistant. Allow for room on all sides of the appliance for proper ventilation.

2. Assemble the appliance.

- a. If handle is not assembled, assemble the handle to the lid using the Lid Handle Assembly instructions
- b. Fill the Drip Tray (5) with 2 cups of water. Place carefully into unit.
- c. Insert Collection Pan (4)
- d. Insert Heating Element (3)
- e. Insert Grill Plate (2)



3. Plug power cord into a 120v wall outlet.
4. Push POWER button (B) to turn on appliance and select target temperature using the +/-temperature buttons (C). The unit will start to preheat and LED (A) will start to blink until the target temperature is reached. Once preheated, the light will turn to a solid red.
5. Push FAN button (D) to turn on the smoke capture fan. LED (E) will illuminate to indicate the fan is on. The fan should be ON throughout cooking process to reduce smoke.
6. Once preheated, place food onto grill plate (2) and cover with lid (1). Keeping the lid on throughout cooking process will help to maintain cooking temperature, prevent splatter, and capture smoke.



7. Cook to desired temperature. Once cooking has finished, push the POWER (B) and FAN (C) buttons to turn unit off. Allow to cool completely before cleaning. LED (A) will remain a solid red until unit is safe to handle. Do not move unit with water drip tray full. After cooling, disassemble and empty drip tray and follow cleaning instructions found in Cleaning and Care.

Note: Filling the drip tray with two cups of water is required for every use.

Note: Use the lid while cooking to reduce smoke.

CAUTION! The glass lid and handle may get hot during use. Always use heat safe oven mitts or gloves while cooking.

CAUTION! Never immerse or wash heating element, electric fan or base in water or any other liquids. Unplug unit after each use.

CAUTION! Allow unit to cool completely after use before cleaning.

CAUTION! If excessive smoke persists, unplug appliance, wait for it to cool, and clean the heating element.

TIPS

- Use a high smoke point oil such as Canola or Avocado oil for best results.
- Do not use metal utensils as they may scratch or damage the nonstick surface. Use nylon or wooden utensils.
- Take food out of refrigerator 30 minutes before cooking and allow to come to room temperature. This will allow for more even cooking.
- When cooking with kebabs, soak bamboo or wooden skewers in water overnight to absorb water. This will prevent burning. Metal skewers are not recommended and can scratch the nonstick surface.



CLEANING AND CARE

- Before cleaning, unplug unit from wall outlet and allow to cool to room temperature before handling.
- The Grill Plate, Glass Lid, and plastic drip tray are Dishwasher Safe, top rack only. To extend the life of the nonstick Grill Plate, hand wash is recommended.
- Do not use anything abrasive that can scratch or damage the non-stick coating. Should stubborn stains appear, they will not affect the performance and nonstick quality of the Diamondforce® coating.
- The metal Collection Pan is not dishwasher safe. Clean with hot soapy water and dry thoroughly. Be sure to clean after every use and remove residual grease.
- To clean the housing, use a damp cloth, if necessary, with some mild soapy water.

Unit Assembly diagram on page 5.

- **NOTE:** Remove the electric fan when cleaning the inside of the housing. You can remove the electric fan by following the instructions below:
 1. Unplug unit and remove all attachments.
 2. Turn over unit and slide off fan cover (8).
 3. Lift fan (7) out of the base and disconnect from two prong connection.
 4. After cleaning, insert fan making sure to align the two prongs to the connection. Reconnect the fan cover.
- **CAUTION!** Do not rinse or immerse electric fan and motor in water or any other liquids.

CAUTION:

1. Make sure no water or other liquid penetrates into the appliance.
2. DO NOT place appliance in the dishwasher.
3. NEVER clean or rinse the appliance under running water.
4. DO NOT immerse appliance in liquids.





1 Year Limited Warranty

Sunbeam Products, Inc. ("Sunbeam") warrants that for a period of one year from the date of purchase, this product will be free from defects in material and workmanship. Sunbeam, at its option, will repair or replace this product or any component of the product found to be defective during the warranty period. Replacement will be made with a new or re-manufactured product or component. If the product is no longer available, replacement may be made with a similar product of equal or greater value. This is your exclusive warranty. Do NOT attempt to repair or adjust any electrical or mechanical functions on this product. Doing so will void this warranty.

This warranty is valid for the original retail purchaser from the date of initial retail purchase and is not transferable. Keep the original sales receipt. Proof of purchase is required to obtain warranty performance. Sunbeam dealers, service centers, or retail stores selling Sunbeam products do not have the right to alter, modify or any way change the terms and conditions of this warranty.

This warranty does not cover normal wear of parts or damage resulting from any of the following: negligent use or misuse of the product, use on improper voltage or current, use contrary to the operating instructions, disassembly, repair or alteration by anyone other than Sunbeam or an authorized Sunbeam service center. Further, the warranty does not cover: Acts of God, such as fire, flood, hurricanes and tornadoes.

What are the limits on Sunbeam's Liability?

Sunbeam shall not be liable for any incidental or consequential damages caused by the breach of any express, implied or statutory warranty or condition.

Except to the extent prohibited by applicable law, any implied warranty or condition of merchantability or fitness for a particular purpose is limited in duration to the duration of the above warranty.

Sunbeam disclaims all other warranties, conditions or representations, express, implied, statutory or otherwise.

Sunbeam shall not be liable for any damages of any kind resulting from the purchase, use or misuse of, or inability to use the product including incidental, special, consequential or similar damages or loss of profits, or for any breach of contract, fundamental or otherwise, or for any claim brought against purchaser by any other party.

Some provinces, states or jurisdictions do not allow the exclusion or limitation of incidental or consequential damages or limitations on how long an implied warranty lasts, so the above limitations or exclusion may not apply to you.

This warranty gives you specific legal rights, and you may also have other rights that vary from province to province, state to state or jurisdiction to jurisdiction.

How to Obtain Warranty Service

In the U.S.A.

If you have any question regarding this warranty or would like to obtain warranty service, please call 1-800-334-0759 and a convenient service center address will be provided to you.

In the U.S.A., this warranty is offered by Sunbeam Products, Inc. located in Boca Raton, Florida 33431. If you have any other problem or claim in connection with this product, please write our Consumer Service Department.

PLEASE DO NOT RETURN THIS PRODUCT TO ANY OF THESE ADDRESSES OR TO THE PLACE OF PURCHASE.

