



**MAX CT™**

**Maximum Cutting  
Performance on  
Aerospace Alloys**





## MAX CT™

### Maximum Cutting Performance on Aerospace Alloys

#### EXCEPTIONAL BLADE LIFE

Multi-chip tooth pattern balances the chip load and reduces cutting forces

Next generation welding technology prevents premature tooth loss

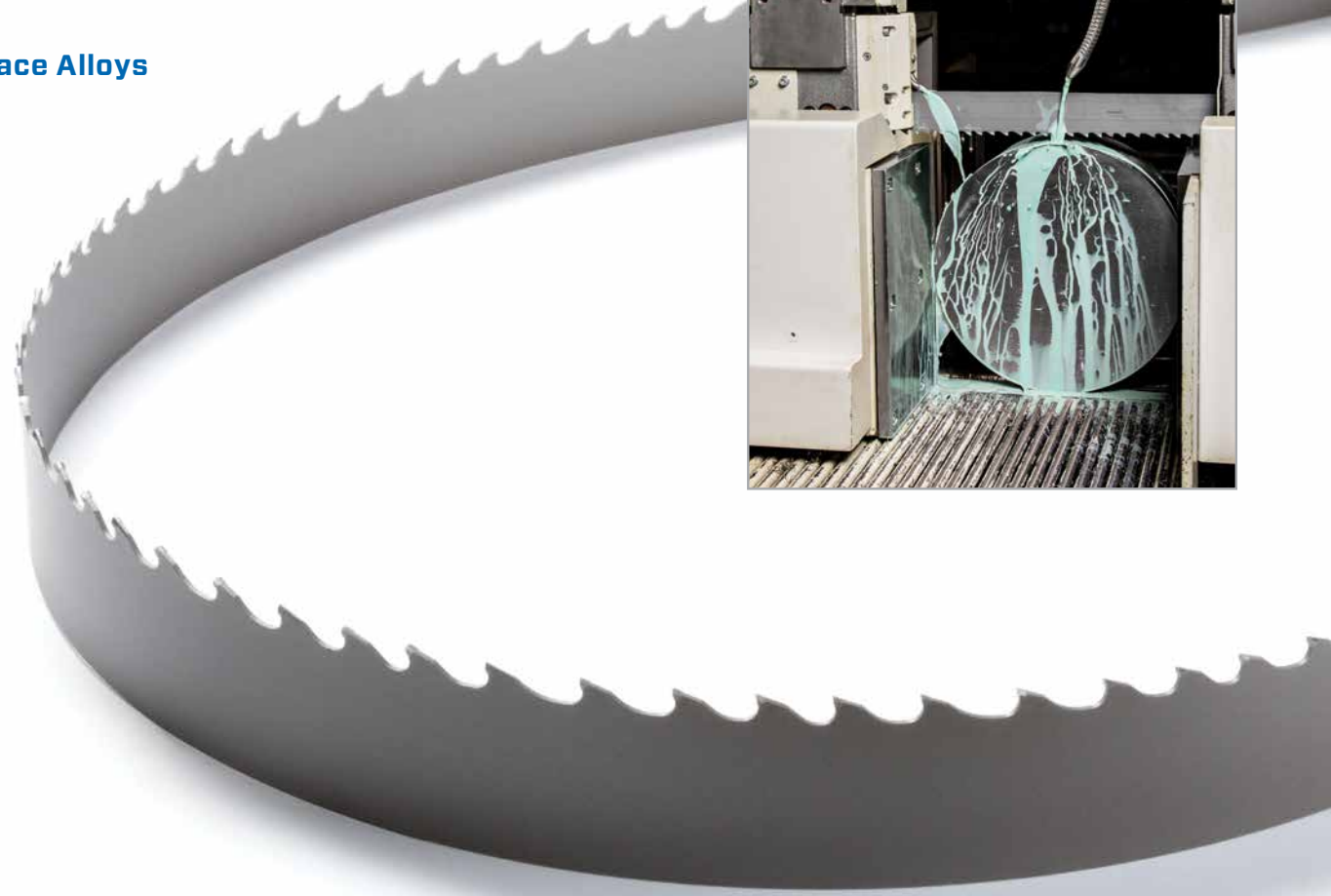
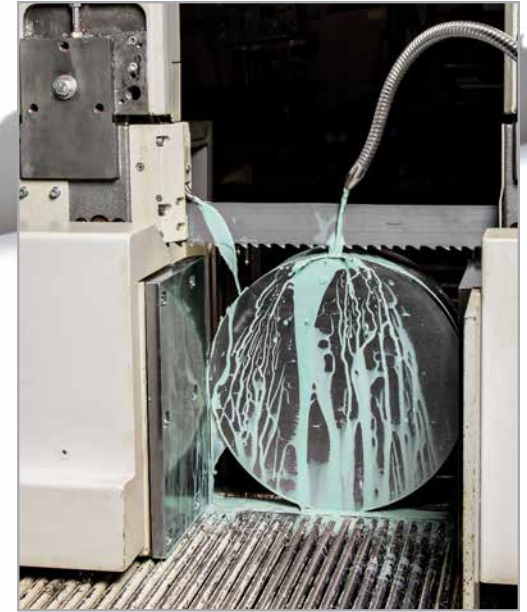
#### FASTER, STRAIGHTER CUTS

Aggressive rake angles aid in tooth penetration in difficult to cut metals

Optimized gullet geometry increases beam strength for straighter cuts

#### SUPERIOR PART FINISH

Precision ground carbides create razor sharp teeth for a mirror-like finish on cut parts

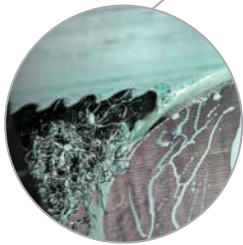


WIDTH X THICKNESS		TPI			
INCH	MM	0.9/1.1	1.0/1.4	1.4/2.0	2/3
1-1/4 x .042	34 x 1.07				♦
1-1/2 x .050	41 x 1.27			♦	♦
2 x .050	54 x 1.27			♦	♦
2 x .063	54 x 1.60			♦	♦
2-5/8 x .063	67 x 1.60	♦	♦	♦	
3 x .063	80 x 1.60	♦			

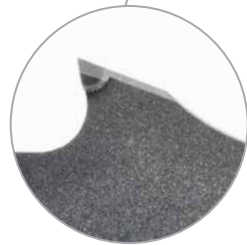
APPLICATION

Nickel-Based Alloys (Inconel®)  
Stainless Steels  
Tool Steels  
Titanium Alloys

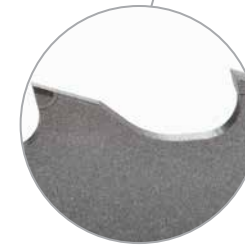




**AGGRESSIVE RAKE ANGLE**  
High rake angles increase the shear plane angle, reducing cutting forces and aiding tooth penetration



**SHARPER TEETH**  
Advanced grinding techniques create clean, sharp edges that deliver superior part finish and quieter cutting



**NEW GULLET DESIGN**  
Optimized gullet geometry reduces stress concentrations, which delivers straighter cuts and longer fatigue life



**MULTI-CHIP TOOTH DESIGN**

The three tooth pattern produces five chips to balance the chip load and reduce cutting forces, leading to longer blade life and superior part finish

**CARBIDE TOOTH SELECTION**

		WIDTH OR DIAMETER OF CUT															
INCHES		1	2	3	4	5	6	7	8	10	11	14	16	18	20		
MM		25	50	75	100	125	150	175	200	250	275	350	400	450	500+		
							0.9/1.1 TPI										
						1.0/1.4 TPI											
					1.4/2.0 TPI												
2/3 TPI																	



**LENOX** 

**Customer Service 800-628-8810**  
**Technical Support 800-642-0010**  
**[lenoxtools.com](http://lenoxtools.com)**

L7802  
301 Chestnut Street  
East Longmeadow, MA 01028-0504 USA  
©2014 LENOX, Newell Rubbermaid  
C14420016