

# INSTALL/REMOVAL INSTRUCTIONS: WINDOW REGULATOR

**ATTENTION:** Refer to the appropriate shop manual for your vehicle to obtain specific service procedures for this part. If you do not have a service manual or lack the skill to install this part, it is recommended that you seek the services of a qualified technician. Pay special attention to all cautions and warnings included in the shop manual. Read and follow all instructions carefully.

## REMOVAL/INSTALL OF WINDOW REGULATOR (665-4675) Lincoln Aviator 2003–05, Ford Explorer except Sport Trac 2003–05, Ford Explorer 2006–08, Mercury Mountaineer 2003–08

### General Tech Tips:

- Use painter's tape rather than duct tape to secure window. It will not damage paint or leave sticky residue.
- A plastic pry tool is useful. It will not easily damage delicate trim like a screwdriver or metal pry bar.
- The replacement regulator should have a liberal amount of grease on slide area. If there is not much grease present, white lithium grease works well to lubricate the slide area.
- Aftermarket window tinting can cause the window to travel slower and put additional strain on the window regulator assembly.
- Window run channels should be cleaned and lubricated before installation of a new window regulator assembly. Silicone spray works well.

**PLEASE WEAR SAFETY GLASSES!**

### Tools required for removal and installation of window regulator and motor assembly:

- Silicone spray lubricant
- Trim panel removal tool
- Pick
- Saddle cup assembly, tape, or wedge to hold window in place
- Flat-blade screwdriver or plastic pry tool
- 10mm socket or driver
- Phillips screwdriver
- Grease pencil or marker
- 6mm socket



#### Disclaimer:

Even though every attempt is made to ensure this information is complete and accurate, it is impossible to account for all possible circumstances or situations. Please consult with a qualified auto technician before attempting to perform any work you are not qualified to do. Automobiles can be hazardous to work on; be sure to take all necessary safety precautions. Failure to do so may result in property damage or personal injury. Certain motor vehicle standards and performance requirements may apply to your motor vehicle (such as Federal Motor Vehicle Safety Standards by the National Highway Traffic Safety Administration). Be sure that your work is performed in accordance with such standards and that you do not disable any motor vehicle safety feature.

©2013 Dorman Products, Inc.

No reproductions in whole or in part without prior written approval.

# INSTALL/REMOVAL INSTRUCTIONS: WINDOW REGULATOR

**ATTENTION:** Refer to the appropriate shop manual for your vehicle to obtain specific service procedures for this part. If you do not have a service manual or lack the skill to install this part, it is recommended that you seek the services of a qualified technician. Pay special attention to all cautions and warnings included in the shop manual. Read and follow all instructions carefully.

## Removal Instructions

**STEP 1:** Using a trim panel removal tool, release the power switch assembly from the interior door trim panel.



**STEP 2:** Disconnect the power switch assembly.



**STEP 3:** Using a 6mm socket and ratchet, remove the interior door trim panel retaining screw.



Disclaimer:

Even though every attempt is made to ensure this information is complete and accurate, it is impossible to account for all possible circumstances or situations. Please consult with a qualified auto technician before attempting to perform any work you are not qualified to do. Automobiles can be hazardous to work on; be sure to take all necessary safety precautions. Failure to do so may result in property damage or personal injury. Certain motor vehicle standards and performance requirements may apply to your motor vehicle (such as Federal Motor Vehicle Safety Standards by the National Highway Traffic Safety Administration). Be sure that your work is performed in accordance with such standards and that you do not disable any motor vehicle safety feature.

©2013 Dorman Products, Inc.

No reproductions in whole or in part without prior written approval.

# INSTALL/REMOVAL INSTRUCTIONS: WINDOW REGULATOR

**ATTENTION:** Refer to the appropriate shop manual for your vehicle to obtain specific service procedures for this part. If you do not have a service manual or lack the skill to install this part, it is recommended that you seek the services of a qualified technician. Pay special attention to all cautions and warnings included in the shop manual. Read and follow all instructions carefully.

**STEP 4:** Using a 6mm socket and ratchet assembly, remove the door pull/interior door trim panel retaining screw.



**STEP 5:** Once the interior door trim panel retaining screws have been removed, place a trim panel removal tool between the interior door trim panel and the door. Pull the tool toward you to release the interior door trim panel. Once you have released the interior door trim panel, lift it in an upward motion to remove it from the vehicle.



**STEP 6:** Disconnect the wiring harness adapter.



Disclaimer:

Even though every attempt is made to ensure this information is complete and accurate, it is impossible to account for all possible circumstances or situations. Please consult with a qualified auto technician before attempting to perform any work you are not qualified to do. Automobiles can be hazardous to work on; be sure to take all necessary safety precautions. Failure to do so may result in property damage or personal injury. Certain motor vehicle standards and performance requirements may apply to your motor vehicle (such as Federal Motor Vehicle Safety Standards by the National Highway Traffic Safety Administration). Be sure that your work is performed in accordance with such standards and that you do not disable any motor vehicle safety feature.

©2013 Dorman Products, Inc.

No reproductions in whole or in part without prior written approval.



# INSTALL/REMOVAL INSTRUCTIONS: WINDOW REGULATOR

**ATTENTION:** Refer to the appropriate shop manual for your vehicle to obtain specific service procedures for this part. If you do not have a service manual or lack the skill to install this part, it is recommended that you seek the services of a qualified technician. Pay special attention to all cautions and warnings included in the shop manual. Read and follow all instructions carefully.

**STEP 7:** Using a 6mm socket and ratchet assembly, remove the four (4) door speaker retaining screws.



**STEP 8:** Disconnect the door speaker.



**STEP 9:** Remove the water vapor barrier.



Disclaimer:

Even though every attempt is made to ensure this information is complete and accurate, it is impossible to account for all possible circumstances or situations. Please consult with a qualified auto technician before attempting to perform any work you are not qualified to do. Automobiles can be hazardous to work on; be sure to take all necessary safety precautions. Failure to do so may result in property damage or personal injury. Certain motor vehicle standards and performance requirements may apply to your motor vehicle (such as Federal Motor Vehicle Safety Standards by the National Highway Traffic Safety Administration). Be sure that your work is performed in accordance with such standards and that you do not disable any motor vehicle safety feature.

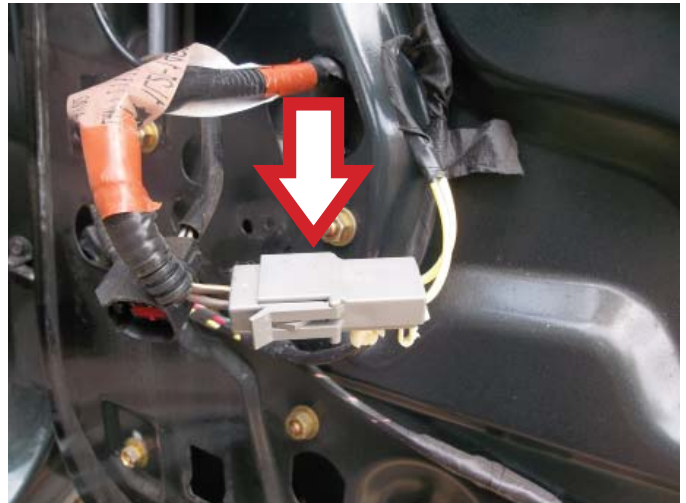
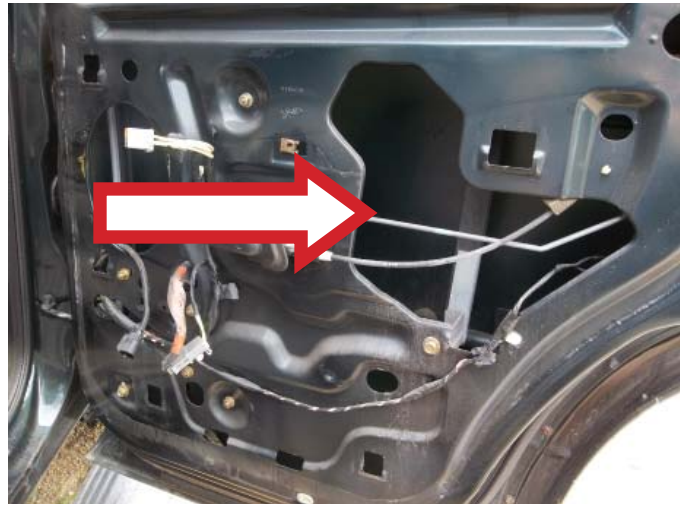
©2013 Dorman Products, Inc.

No reproductions in whole or in part without prior written approval.

# INSTALL/REMOVAL INSTRUCTIONS: WINDOW REGULATOR

**ATTENTION:** Refer to the appropriate shop manual for your vehicle to obtain specific service procedures for this part. If you do not have a service manual or lack the skill to install this part, it is recommended that you seek the services of a qualified technician. Pay special attention to all cautions and warnings included in the shop manual. Read and follow all instructions carefully.

**STEP 10:** Temporarily connect the power switch assembly and the wiring harness adapter to lower the door glass, exposing the screws retaining the window regulator to the door glass.



**STEP 11:** Using a 10mm socket and ratchet assembly, remove the screw attaching the window glass to the window regulator.

**STEP 12:** Once the door glass has been separated from the window regulator, manually slide the door glass into the closed position and hold in place with a saddle cup assembly, painter's tape, or a wedge.

Disclaimer:

Even though every attempt is made to ensure this information is complete and accurate, it is impossible to account for all possible circumstances or situations. Please consult with a qualified auto technician before attempting to perform any work you are not qualified to do. Automobiles can be hazardous to work on; be sure to take all necessary safety precautions. Failure to do so may result in property damage or personal injury. Certain motor vehicle standards and performance requirements may apply to your motor vehicle (such as Federal Motor Vehicle Safety Standards by the National Highway Traffic Safety Administration). Be sure that your work is performed in accordance with such standards and that you do not disable any motor vehicle safety feature.

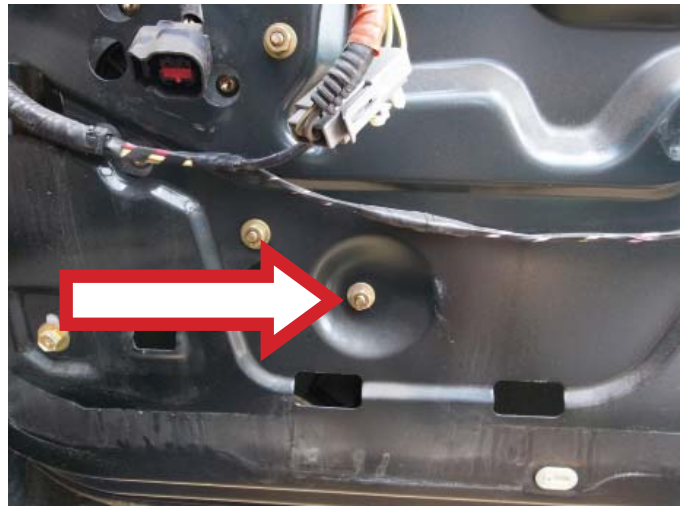
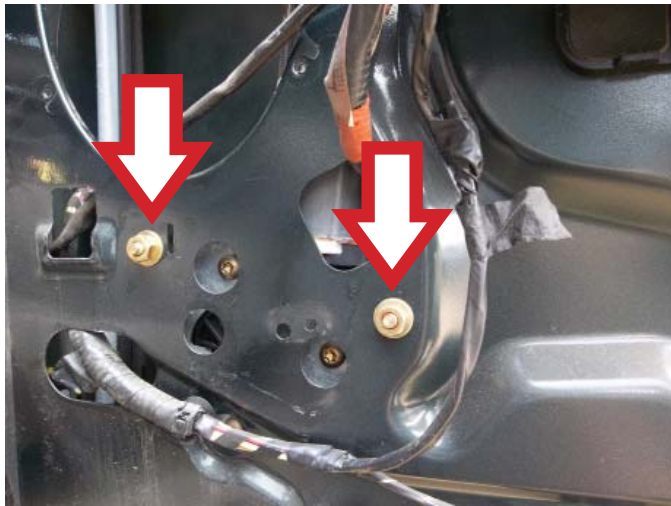
©2013 Dorman Products, Inc.

No reproductions in whole or in part without prior written approval.

# INSTALL/REMOVAL INSTRUCTIONS: WINDOW REGULATOR

**ATTENTION:** Refer to the appropriate shop manual for your vehicle to obtain specific service procedures for this part. If you do not have a service manual or lack the skill to install this part, it is recommended that you seek the services of a qualified technician. Pay special attention to all cautions and warnings included in the shop manual. Read and follow all instructions carefully.

**STEP 13:** Using a 10mm socket and ratchet assembly, remove the four (4) window regulator retaining screws.



**STEP 14:** Remove the window regulator from the door through the main access hole.



Disclaimer:

Even though every attempt is made to ensure this information is complete and accurate, it is impossible to account for all possible circumstances or situations. Please consult with a qualified auto technician before attempting to perform any work you are not qualified to do. Automobiles can be hazardous to work on; be sure to take all necessary safety precautions. Failure to do so may result in property damage or personal injury. Certain motor vehicle standards and performance requirements may apply to your motor vehicle (such as Federal Motor Vehicle Safety Standards by the National Highway Traffic Safety Administration). Be sure that your work is performed in accordance with such standards and that you do not disable any motor vehicle safety feature.

©2013 Dorman Products, Inc.

No reproductions in whole or in part without prior written approval.



# INSTALL/REMOVAL INSTRUCTIONS: WINDOW REGULATOR

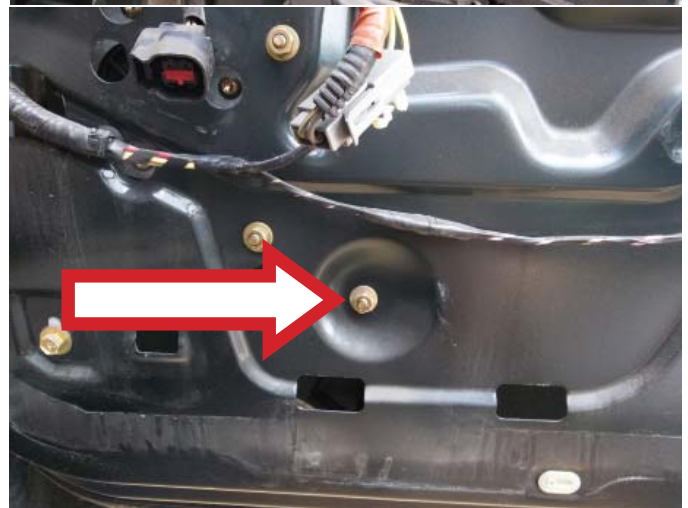
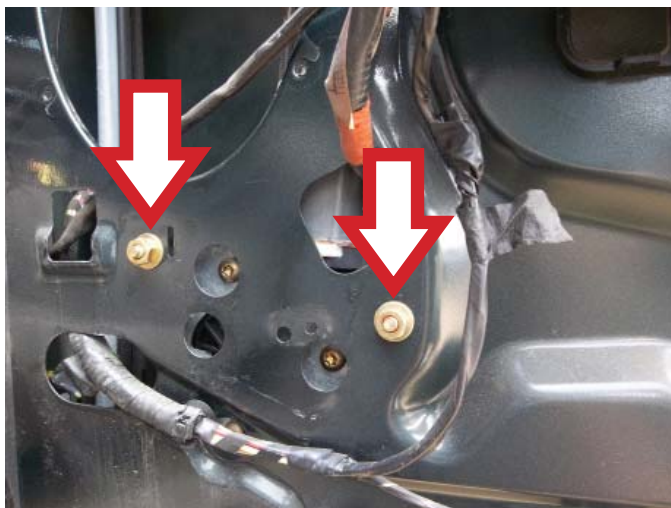
**ATTENTION:** Refer to the appropriate shop manual for your vehicle to obtain specific service procedures for this part. If you do not have a service manual or lack the skill to install this part, it is recommended that you seek the services of a qualified technician. Pay special attention to all cautions and warnings included in the shop manual. Read and follow all instructions carefully.

## Installation Instructions

**STEP 1:** Place the window regulator through the main access hole.



**STEP 2:** Using a 10mm socket and ratchet assembly, attach the four (4) window regulator attaching screws.



Disclaimer:

Even though every attempt is made to ensure this information is complete and accurate, it is impossible to account for all possible circumstances or situations. Please consult with a qualified auto technician before attempting to perform any work you are not qualified to do. Automobiles can be hazardous to work on; be sure to take all necessary safety precautions. Failure to do so may result in property damage or personal injury. Certain motor vehicle standards and performance requirements may apply to your motor vehicle (such as Federal Motor Vehicle Safety Standards by the National Highway Traffic Safety Administration). Be sure that your work is performed in accordance with such standards and that you do not disable any motor vehicle safety feature.

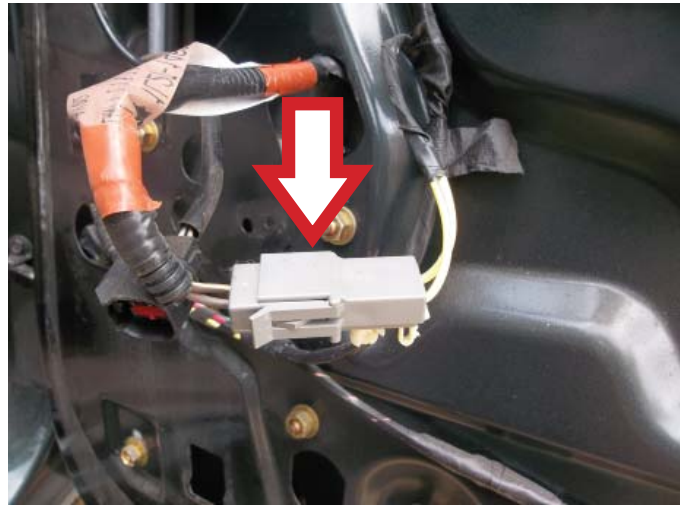
©2013 Dorman Products, Inc.

No reproductions in whole or in part without prior written approval.

# INSTALL/REMOVAL INSTRUCTIONS: WINDOW REGULATOR

**ATTENTION:** Refer to the appropriate shop manual for your vehicle to obtain specific service procedures for this part. If you do not have a service manual or lack the skill to install this part, it is recommended that you seek the services of a qualified technician. Pay special attention to all cautions and warnings included in the shop manual. Read and follow all instructions carefully.

**STEP 3:** Temporarily connect the wiring harness adapter and the power switch assembly, to raise or lower the screw attaching the door glass to the window regulator.



**STEP 4:** Manually slide the door glass down, to align with the mount attaching the window regulator to the door glass.

**STEP 4a:** Using a 10mm socket and ratchet assembly, attach the door glass to the window regulator.

**STEP 5:** Install the water vapor barrier.



Disclaimer:

Even though every attempt is made to ensure this information is complete and accurate, it is impossible to account for all possible circumstances or situations. Please consult with a qualified auto technician before attempting to perform any work you are not qualified to do. Automobiles can be hazardous to work on; be sure to take all necessary safety precautions. Failure to do so may result in property damage or personal injury. Certain motor vehicle standards and performance requirements may apply to your motor vehicle (such as Federal Motor Vehicle Safety Standards by the National Highway Traffic Safety Administration). Be sure that your work is performed in accordance with such standards and that you do not disable any motor vehicle safety feature.

©2013 Dorman Products, Inc.

No reproductions in whole or in part without prior written approval.



# INSTALL/REMOVAL INSTRUCTIONS: WINDOW REGULATOR

**ATTENTION:** Refer to the appropriate shop manual for your vehicle to obtain specific service procedures for this part. If you do not have a service manual or lack the skill to install this part, it is recommended that you seek the services of a qualified technician. Pay special attention to all cautions and warnings included in the shop manual. Read and follow all instructions carefully.

**STEP 6:** Connect the wiring harness adapter.



**STEP 7:** Connect the door speaker.



**STEP 8:** Using a 6mm socket and ratchet assembly, attach the four (4) door speaker retaining screws.



Disclaimer:

Even though every attempt is made to ensure this information is complete and accurate, it is impossible to account for all possible circumstances or situations. Please consult with a qualified auto technician before attempting to perform any work you are not qualified to do. Automobiles can be hazardous to work on; be sure to take all necessary safety precautions. Failure to do so may result in property damage or personal injury. Certain motor vehicle standards and performance requirements may apply to your motor vehicle (such as Federal Motor Vehicle Safety Standards by the National Highway Traffic Safety Administration). Be sure that your work is performed in accordance with such standards and that you do not disable any motor vehicle safety feature.

©2013 Dorman Products, Inc.

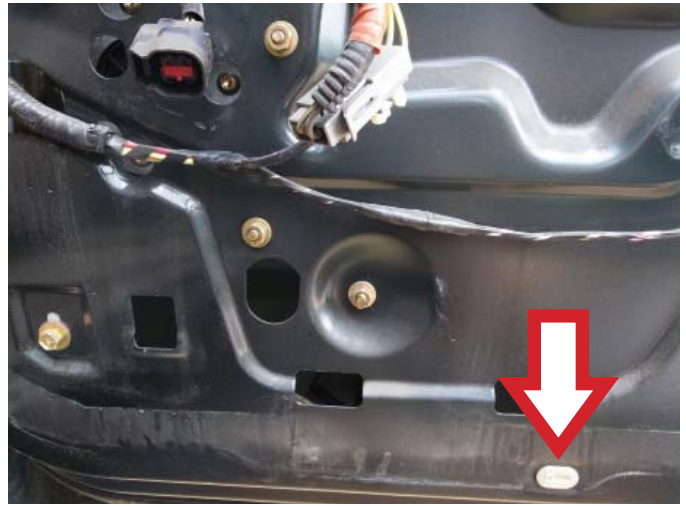
No reproductions in whole or in part without prior written approval.

# INSTALL/REMOVAL INSTRUCTIONS: WINDOW REGULATOR

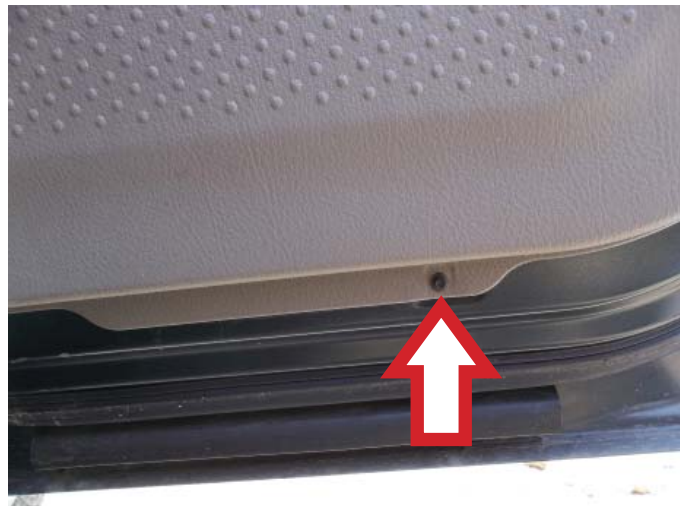
**ATTENTION:** Refer to the appropriate shop manual for your vehicle to obtain specific service procedures for this part. If you do not have a service manual or lack the skill to install this part, it is recommended that you seek the services of a qualified technician. Pay special attention to all cautions and warnings included in the shop manual. Read and follow all instructions carefully.

**STEP 9:** Slide the interior door trim panel in a downward position. Be sure to align the built-in retainers on the back side of the interior door trim panel with the corresponding pre-cut holes in the door.

**NOTE:** Once the interior door trim panel has been set in place, re-use the original mounting hole for the interior door trim panel retaining screw.



**STEP 10:** Using a 6mm socket and ratchet assembly, install the interior door trim panel retaining screws.



Disclaimer:

Even though every attempt is made to ensure this information is complete and accurate, it is impossible to account for all possible circumstances or situations. Please consult with a qualified auto technician before attempting to perform any work you are not qualified to do. Automobiles can be hazardous to work on; be sure to take all necessary safety precautions. Failure to do so may result in property damage or personal injury. Certain motor vehicle standards and performance requirements may apply to your motor vehicle (such as Federal Motor Vehicle Safety Standards by the National Highway Traffic Safety Administration). Be sure that your work is performed in accordance with such standards and that you do not disable any motor vehicle safety feature.

©2013 Dorman Products, Inc.

No reproductions in whole or in part without prior written approval.

# INSTALL/REMOVAL INSTRUCTIONS: WINDOW REGULATOR

**ATTENTION:** Refer to the appropriate shop manual for your vehicle to obtain specific service procedures for this part. If you do not have a service manual or lack the skill to install this part, it is recommended that you seek the services of a qualified technician. Pay special attention to all cautions and warnings included in the shop manual. Read and follow all instructions carefully.

**STEP 11:** Connect the power switch assembly.



**STEP 12:** Install the power switch assembly.

**NOTE:** Be sure to align the mounting tabs with their corresponding location on the interior door trim panel. Failure to do so will result in damage to the power switch bezel assembly.



**STEP 13:** Verify that the interior door trim panel retaining screws are secure and that the window regulator assembly is operating properly.

**We appreciate your opinions regarding this product!**  
**Please call our Technical Assistant with any challenges or suggestions regarding the installation or operation of this product.**

**1-800-523-2492**

Disclaimer:

Even though every attempt is made to ensure this information is complete and accurate, it is impossible to account for all possible circumstances or situations. Please consult with a qualified auto technician before attempting to perform any work you are not qualified to do. Automobiles can be hazardous to work on; be sure to take all necessary safety precautions. Failure to do so may result in property damage or personal injury. Certain motor vehicle standards and performance requirements may apply to your motor vehicle (such as Federal Motor Vehicle Safety Standards by the National Highway Traffic Safety Administration). Be sure that your work is performed in accordance with such standards and that you do not disable any motor vehicle safety feature.

©2013 Dorman Products, Inc.

No reproductions in whole or in part without prior written approval.