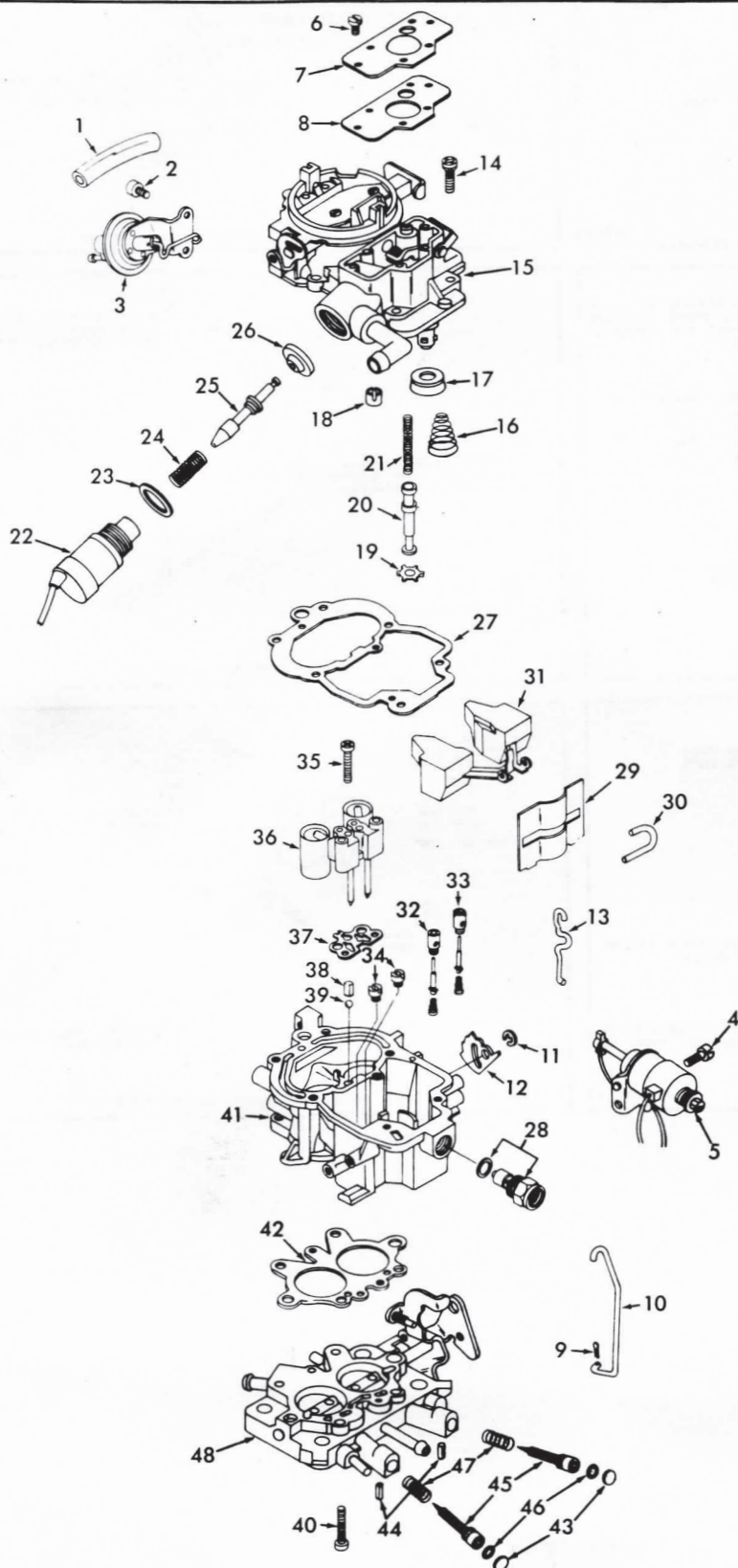


INSTRUCTION SHEET OFF VEHICLE CARBURETOR SERVICE HOLLEY MODEL - 2280

TRUCK

GENERAL EXPLODED VIEW

THE GENERAL DESIGN AND PARTS SHOWN WILL VARY TO
INDIVIDUAL UNITS COVERED ON THIS INSTRUCTION SHEET.



DISASSEMBLY

USE EXPLODED VIEW AS A GUIDE. THE NUMERICAL SEQUENCE MAY GENERALLY BE FOLLOWED TO DISASSEMBLE UNIT FAR ENOUGH TO PERMIT CLEANING AND INSPECTION. SERVICE HELPS: CAREFULLY PRY UP RETAINING RING (19) TO REMOVE VACUUM PISTON (20). TO REMOVE FLOAT BAFFLE (29) CAREFULLY LIFT OUT FLOAT, BAFFLE AND FLOAT HINGE PIN AS AN ASSEMBLY. POWER VALVE ASSY'S (32) AND (33) ARE ALMOST IDENTICAL IN APPEARANCE. IDENTIFY VALVES AND KEEP COMPONENT PARTS TOGETHER FOR PROPER REASSEMBLY. MECHANICAL POWER VALVE IS ON THE CHOKE VACUUM KICK SIDE AND THE VACUUM POWER VALVE IS ON THE THROTTLE LEVER SIDE.

TO REMOVE IDLE ADJUSTING NEEDLE'S (45): A. DRILL A .086" PILOT HOLE IN BOTH CASTINGS DIRECTLY ABOVE ROLL PINS. REDRILL HOLE TO .120". DRIVE OUT ROLL PINS WITH A PUNCH B. DRILL A .086" PILOT HOLE AT A 45 ANGLE INTO CASTING TOWARD PLUG. REDRILL HOLE TO .120". INSERT PUNCH AND DRIVE OUT PLUG'S.

NOMENCLATURE

REF. NO.	REF. NO.
1. HOSE-CHOKE PULL OFF	26. VALVE-BOWL VENT
2. SCREW (2)-CHOKE PULL OFF	27. GASKET-BOWL COVER
3. CHOKE PULL OFF ASSY.	28. NEEDLE & SEAT ASSY.
4. SCREW-SOLENOID (THROTTLE CONTROL)	29. BAFFLE
5. SOLENOID ASSY.-(THROTTLE CONTROL)	30. PIN-FLOAT
6. SCREW (6)-COVER	31. FLOAT ASSY.
7. COVER-PUMP HOUSING	32. POWER VALVE ASSY.-MECHANICAL
8. GASKET-COVER	33. POWER VALVE ASSY.-VACUUM
9. COTTER PIN-PUMP ROD	34. JET (2)-MAIN
10. ROD-PUMP	35. SCREW (2)-VENTURI CLUSTER
11. E-CLIP-FLOAT IDLE CAM	36. VENTURI CLUSTER ASSY.
12. CAM-FAST IDLE	37. GASKET-VENTURI CLUSTER
13. ROD-FAST IDLE	38. WEIGHT-BALL
14. SCREW & LOCKWASHER (6)-BOWL COVER	39. BALL-PUMP DISCHARGE
15. BOWL COVER ASSY.	40. SCREW & LOCKWASHER (4)-THROTTLE BODY
16. SPRING-PUMP RETURN	41. FLOAT BOWL ASSY.
17. CUP-PUMP	42. GASKET-THROTTLE BODY
18. CAP-MECH POWER VALVE STEM	43. PLUG (2)-IDLE ADJ. NEEDLE
19. RETAINER-VACUUM POWER PISTON	44. PIN (2)-IDLE ADJ. NEEDLE
20. VACUUM POWER PISTON	45. NEEDLE-IDLE ADJUSTING
21. SPRING-POWER PISTON	46. O-RING-IDLE ADJ. NEEDLE
22. SOLENOID ASSY.-BOWL VENT	47. SPRING-IDLE ADJ. NEEDLE
23. GASKET-SOLENOID	48. THROTTLE BODY ASSY.
24. SPRING-SOLENOID PLUNGER	
25. PLUNGER-SOLENOID	

CLEANING

CLEANING MUST BE DONE WITH CARBURETOR DISASSEMBLED. SOAK PARTS LONG ENOUGH TO SOFTEN AND REMOVE ALL FOREIGN MATERIAL. USE A CARBURETOR CLEANING SOLVENT. MAKE CERTAIN THE THROTTLE BORES ARE FREE OF ALL CARBON AND VARNISH DEPOSITS. RINSE OFF IN SUITABLE SOLVENT. BLOW OUT ALL PASSAGES IN CASTINGS WITH COMPRESSED AIR AND CHECK CAREFULLY TO INSURE THOROUGH CLEANING OF OBSCURE AREAS. CAUTION: DO NOT SOAK SOLENOIDS, DIAPHRAGM UNITS OR FLOAT IN CLEANING SOLVENTS.

REASSEMBLY

REASSEMBLE IN THE REVERSE ORDER OF DISASSEMBLY. NOTE SPECIAL INSTRUCTIONS AND FOLLOW NUMERICAL OUTLINE IN MAKING ADJUSTMENTS.

SPECIAL INSTRUCTIONS

IDLE ADJUSTING NEEDLE'S (45) - TURN IN UNTIL LIGHTLY SEATED THEN BACK OUT 1 TURN. (DO NOT INSTALL PINS OR PLUGS AT THIS TIME)

THROTTLE BODY SCREWS (40) - TIGHTEN SCREWS TO 30 INCH LBS.

BAFFLE (29) - INSTALL FLOAT THROUGH BAFFLE (BAFFLE TABS POINTING DOWNWARD) AND FLOAT PIN IN HINGE. PLACE PARTS IN BOWL. FULLY SEAT BAFFLE IN BOWL.

NEEDLE & SEAT ASSY. (28) - TIGHTEN TO 200 INCH LBS.

RETAINER (19) - BE SURE ALL TONGS ARE PROPERLY SEATED TO SECURE RETAINER. PRESS AND RELEASE VACUUM PISTON A FEW TIMES TO CHECK IF IT IS SECURED.

BOWL COVER SCREWS (14) - TIGHTEN TO 25 INCH LBS. FROM THE CENTER OUT.

ADJUSTMENTS

