

# INSTRUCTION SHEET

## OFF VEHICLE CARBURETOR SERVICE

### HOLLEY MODEL - 6280

08050-703-1

**GENERAL EXPLODED VIEW**  
THE GENERAL DESIGN AND PARTS SHOWN WILL VARY TO  
INDIVIDUAL UNITS COVERED ON THIS INSTRUCTION SHEET

#### DISASSEMBLY

USE EXPLODED VIEW AS A GUIDE. THE NUMERICAL SEQUENCE MAY GENERALLY BE FOLLOWED TO DISASSEMBLE UNIT FAR ENOUGH TO PERMIT CLEANING AND INSPECTION. SERVICE HELPS: DISCONNECT THROTTLE CONTROL SOLENOID WIRES AT LOOM CONNECTOR (RECORD COLOR AND POSITION FOR REASSEMBLY). AS BOWL COVER IS REMOVED, PRY RUBBER GROMMET WITH SOLENOID WIRES FROM COVER AND LOOSEN GASKET FROM COVER BEFORE LIFTING COVER OFF. TO REMOVE VACUUM POWER PISTON, REMOVE STAKING FROM PISTON RETAINING WASHER AND SNAP PISTON OUT. TO REMOVE FLOAT BAFFLE, CAREFULLY LIFT OUT BAFFLE, FLOAT AND FLOAT PIN AS AN ASSEMBLY.

TO REMOVE IDLE ADJUSTING NEEDLES, DRILL A 3/16" HOLE 1/4" IN FROM END OF EACH CASTING, AND PRY PLUGS OUT. SAVE FOR REUSE.

#### NOMENCLATURE

REF. NO.	REF. NO.
1. SCREW (2) CHOKE PULL OFF	25. SPRING - POWER PISTON
2. CHOKE PULL OFF ASSY.	26. SCREW & LOCKWASHER (2) - SOLENOID
3. SCREW - WIRE BRACKET	27. SOLENOID - OXYGEN FEEDBACK
4. SCREW - SOLENOID	28. O-RING - FEEDBACK SOLENOID
5. SOLENOID ASSY. - THROTTLE CONTROL	29. GASKET - BOWL COVER
6. SCREW (3) - COVER PLATE	30. NEEDLE & SEAT ASSY.
7. COVER PLATE - BOWL VENT	31. BAFFLE
8. GASKET - COVER PLATE	32. PIN - FLOAT
9. COTTER PIN - PUMP ROD	33. FLOAT ASSY.
10. ROD - PUMP	34. POWER VALVE ASSY.
11. E CLIP - FAST IDLE CAM	35. JET (2) MAIN
12. CAM - FAST IDLE	36. SCREW (2) VENTURI CLUSTER
13. ROD - FAST IDLE	37. VENTURI CLUSTER ASSY.
14. SCREW & LOCKWASHER (6) - BOWL COVER	38. GASKET - VENTURI CLUSTER
15. BOWL COVER ASSY.	39. WEIGHT - BALL
16. SOLENOID ASSY. - BOWL VENT	40. BALL - PUMP DISCHARGE
17. GASKET - SOLENOID	41. SCREW & LOCKWASHER (4) - THROTTLE BODY
18. SPRING - SOLENOID PLUNGER	42. FLOAT BOWL ASSY.
19. PLUNGER - SOLENOID	43. GASKET - THROTTLE BODY
20. VALVE - BOWL VENT	44. PLUG (2) - IDLE ADJ. NEEDLE
21. SPRING - PUMP RETURN	45. NEEDLE (2) - IDLE ADJUSTING
22. CUP - PUMP	46. SPRING (2) - IDLE ADJ. NEEDLE
23. RETAINER - VACUUM POWER PISTON	47. THROTTLE BODY ASSY.
24. PISTON - VACUUM POWER	

#### CLEANING

CLEANING MUST BE DONE WITH CARBURETOR DISASSEMBLED. SOAK PARTS LONG ENOUGH TO SOFTEN AND REMOVE ALL FOREIGN MATERIAL. USE A CARBURETOR CLEANING SOLVENT. MAKE CERTAIN THE THROTTLE BORES ARE FREE OF ALL CARBON AND VARNISH DEPOSITS. RINSE OFF IN SUITABLE SOLVENT. BLOW OUT ALL PASSAGES IN CASTINGS WITH COMPRESSED AIR AND CHECK CAREFULLY TO INSURE THOROUGH CLEANING OF OBSCURE AREAS. CAUTION: DO NOT SOAK SOLENOIDS, DIAPHRAGM UNITS OR FLOAT IN CLEANING SOLVENTS.

#### REASSEMBLY

REASSEMBLE IN THE REVERSE ORDER OF DISASSEMBLY. NOTE SPECIAL INSTRUCTIONS AND FOLLOW NUMERICAL OUTLINE IN MAKING ADJUSTMENTS.

#### SPECIAL INSTRUCTIONS

IDLE ADJUSTING NEEDLES (45) - TURN IN UNTIL LIGHTLY SEATED THEN BACK OUT 1 TURN. (DO NOT INSTALL PLUGS AT THIS TIME).

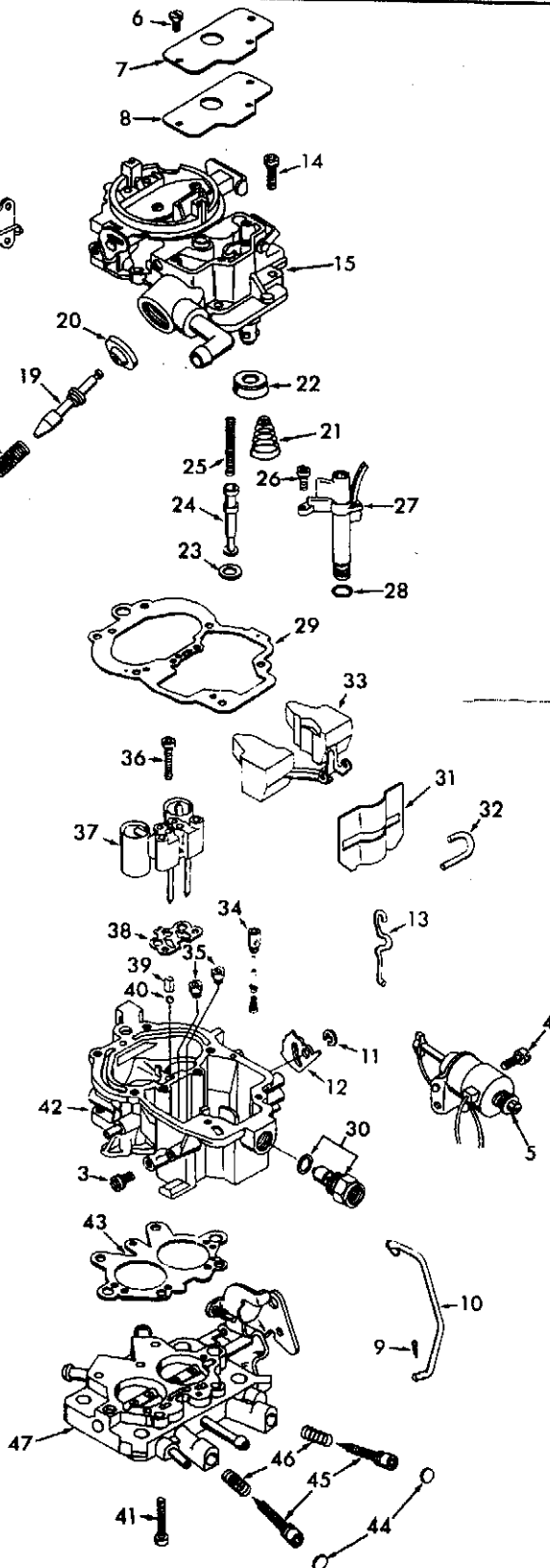
THROTTLE BODY SCREWS (41) TIGHTEN SCREWS TO 30 INCH LBS.

BAFFLE (31) - INSTALL FLOAT THROUGH BAFFLE (BAFFLE TABS POINTING DOWNWARD) AND FLOAT PIN IN HINGE. PLACE PARTS IN BOWL. FULLY SEAT BAFFLE IN BOWL.

NEEDLE & SEAT ASSY. (30) - TIGHTEN TO 200 INCH LBS.

RETAINER (23) - PROPERLY SEAT RETAINER AND RESTAKE. PRESS AND RELEASE VACUUM PISTON A FEW TIMES TO CHECK IF IT IS SECURED.

BOWL COVER SCREWS (14) - TIGHTEN TO 25 INCH LBS. FROM THE CENTER OUT.



# ADJUSTMENTS

