

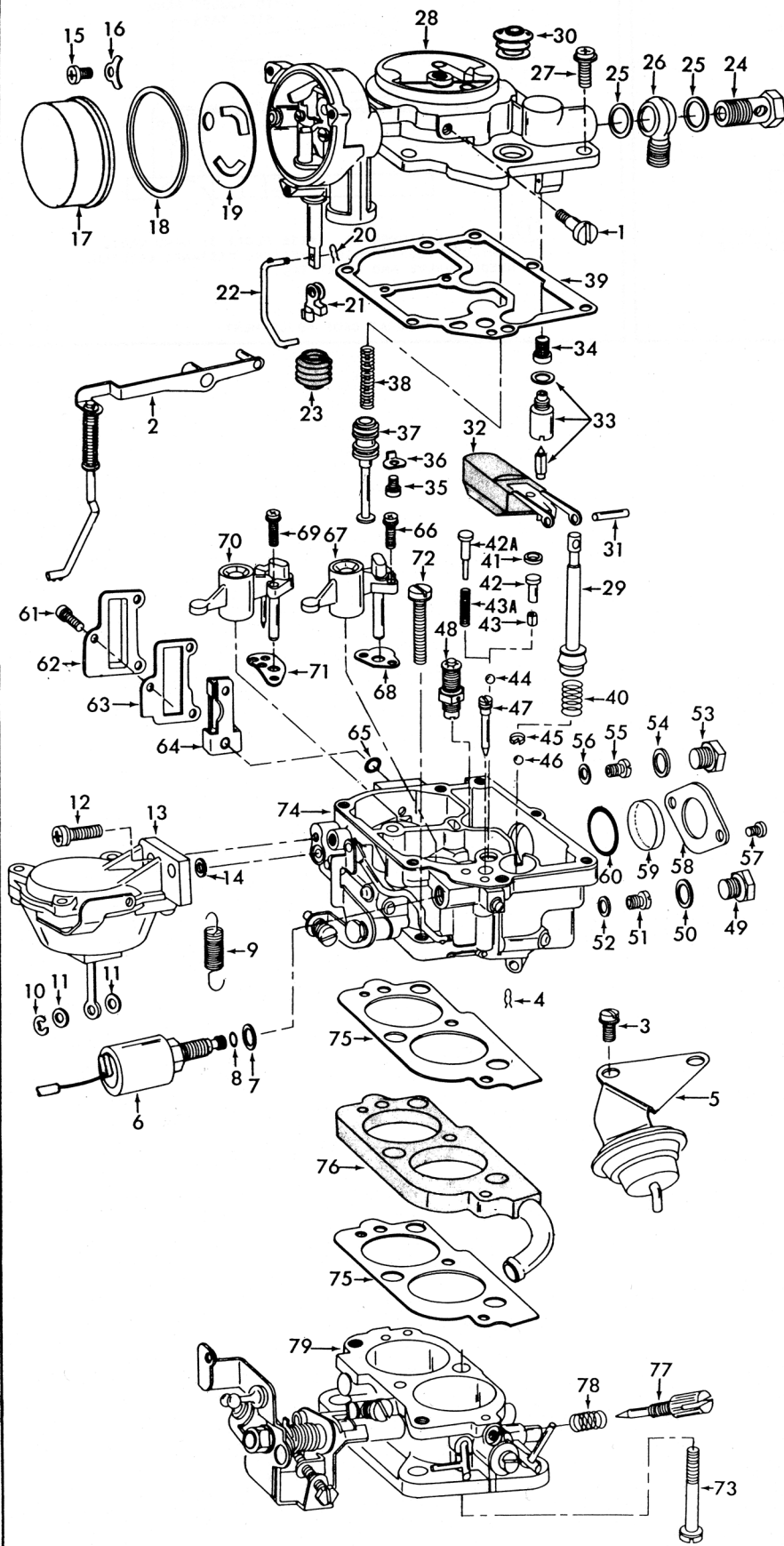
# INSTRUCTION SHEET

## AISAN CARBURETOR

50-493

### GENERAL EXPLODED VIEW

THE GENERAL DESIGN AND PARTS SHOWN WILL VARY TO  
INDIVIDUAL UNITS COVERED ON THIS INSTRUCTION SHEET.



### DISASSEMBLY

USE EXPLODED VIEW AS A GUIDE. THE NUMERICAL SEQUENCE MAY GENERALLY BE FOLLOWED TO DISASSEMBLE UNIT FAR ENOUGH TO PERMIT CLEANING AND INSPECTION. NOTE: DISASSEMBLY OF SECONDARY VACUUM UNIT MAY NOT BE NECESSARY UNLESS DIAPHRAGM IS BEING REPLACED. MODELS USING INSULATOR BLOCK (76) IT WILL BE NECESSARY TO CAREFULLY SCRAPE OFF OLD GASKETS FROM BLOCK BEFORE REASSEMBLY.

### NOMENCLATURE

REF. NO.	REF. NO.
1. SCREW - PUMP LEVER	42. STOPPER - PUMP PASSAGE
2. LEVER & CONNECTING ROD ASSY. - PUMP	42A STOPPER - PUMP PASSAGE (LATE)
3. SCREW & LOCKWASHER (2) - THROTTLE POSITIONER	43. WEIGHT - DISC. BALL
4. RETAINER - CONNECTOR LINK	43A SPRING - PUMP DISC. BALL (LATE)
5. THROTTLE POSITIONER ASSY.	44. BALL - PUMP DISC. (LARGE)
6. SOLENOID - IDLE CUT OFF	45. RETAINER - INTAKE BALL
7. GASKET - SOLENOID	46. BALL - PUMP INTAKE (SMALL)
8. O-RING - SOLENOID SEAL	47. JET - IDLE
9. SPRING - SEC. RETURN	48. POWER VALVE ASSY.
10. RETAINER - SEC. DIAPHRAGM LINK	49. PLUG - PRI. JET
11. WASHER (2) - DIAPHRAGM LINK PIN	50. GASKET - PLUG
12. SCREW, LOCK & FLAT WASHER (2) - SEC. VACUUM UNIT	51. JET - PRI. MAIN (BRASS)
13. SECONDARY VACUUM UNIT.	52. GASKET - PRI. JET
14. GASKET - SEC. VAC. UNIT	53. PLUG - SEC. JET
15. SCREW (3) - CHOKE COVER RETAINER	54. GASKET - PLUG
16. RETAINER (3) - CHOKE COVER	55. JET - SEC. MAIN (CROME)
17. CHOKE COVER & COIL ASSY.	56. GASKET - SEC. JET
18. GASKET - CHOKE COVER	57. SCREW (2) - WINDOW RETAINER
19. PLATE - CHOKE BAFFLE	58. RETAINER - WINDOW
20. RETAINER - FAST IDLE LINK	59. WINDOW - FUEL BOWL
21. CLIP - FAST IDLE LINK	60. GASKET - WINDOW
22. LINK - FAST IDLE	61. SCREW & LOCKWASHER (3) - IDLE COMP. COVER
23. BOOT - FAST IDLE ROD	62. COVER - IDLE COMPENSATOR
24. BOLT - FUEL INLET	63. GASKET - COVER
25. GASKET (2) - INLET BOLT	64. VALVE ASSY. - IDLE COMPENSATOR
26. BANJO FITTING - FUEL INLET.	65. GASKET - IDLE COMP. VALVE
27. SCREW & LOCKWASHER (6) - BOWL COVER	66. SCREW & LOCKWASHER (2) - PRI. VENTURI
28. BOWL COVER ASSY.	67. VENTURI - PRIMARY
29. PUMP PLUNGER ASSY	68. GASKET - PRI. VENTURI
30. BOOT - PUMP	69. SCREW & LOCKWASHER (2) - SEC. VENTURI
31. PIN - FLOAT LEVER	70. VENTURI - SECONDARY
32. FLOAT & LEVER ASSY.	71. GASKET - SEC. VENTURI
33. NEEDLE, SEAT & GASKET ASSY.	72. SCREW & LOCKWASHER (2) - BOWL TO THROTTLE BODY
34. SCREEN - FUEL FILTER	73. SCREW & LOCKWASHER - THROTTLE BODY TO BOWL
35. SCREW & LOCKWASHER - PISTON RETAINER	74. BOWL ASSY.
36. RETAINER - PISTON	75. GASKET (2) - INSULATOR BLOCK
37. PISTON - POWER VALVE	76. INSULATOR BLOCK
38. SPRING - POWER PISTON	77. NEEDLE - IDLE ADJUSTING
39. GASKET - BOWL COVER	78. SPRING - IDLE NEEDLE
40. SPRING - PUMP RETURN	79. THROTTLE BODY ASSY.
41. GASKET - STOPPER	

### CLEANING

CLEANING MUST BE DONE WITH CARBURETOR DISASSEMBLED. USE A CARBURETOR CLEANING SOLVENT. SOAK PARTS LONG ENOUGH TO SOFTEN AND REMOVE ALL FOREIGN MATERIAL. MAKE CERTAIN THE THROTTLE BORES ARE FREE OF ALL CARBON DEPOSITS. WASH OFF IN SUITABLE SOLVENT. BLOW OUT ALL PASSAGES IN CASTINGS WITH COMPRESSED AIR AND CHECK CAREFULLY TO INSURE THOROUGH CLEANING OF OBSCURE AREAS. CAUTION: DO NOT SOAK RUBBER OR PLASTIC PARTS IN CLEANING SOLVENTS, BEING CAREFUL OF DIAPHRAGM ASSY'S (5) (13) SOLENOID (6), FLOAT (32) AND IDLE COMPENSATOR VALVE (64) WHICH HAVE RUBBER COMPONENTS.

### REASSEMBLY

REASSEMBLE IN REVERSE ORDER OF DISASSEMBLY. NOTE SPECIAL INSTRUCTIONS AND ADJUSTMENTS.

### SPECIAL INSTRUCTIONS

IDLE ADJUSTING NEEDLE (77) - TURN NEEDLE IN UNTIL LIGHTLY SEATED, THEN BACK OUT 2 TURNS.

PUMP PLUNGER (29) - REMOVE PAPER SLEEVE FROM LEATHER CUP, FLEX LEATHER OUTWARD SLIGHTLY. SOAK CUP IN LIGHT OIL A FEW MINUTES PRIOR TO PLACING IN CARBURETOR.

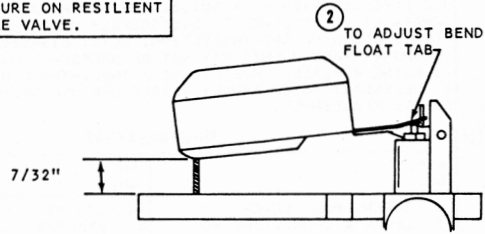
WINDOW (59) - INSTALL WITH DOT TO THE INSIDE OF FUEL BOWL.

CHOKE COVER (17) - ROTATE CHOKE COVER AGAINST SPRING TENSION ALIGN MARK ON COVER WITH INDEX MARK ON HOUSING.

THROTTLE BODY GASKET (75) - WHERE INSULATOR BLOCK IS NOT USED ONLY ONE GASKET IS NEEDED.

# ADJUSTMENTS

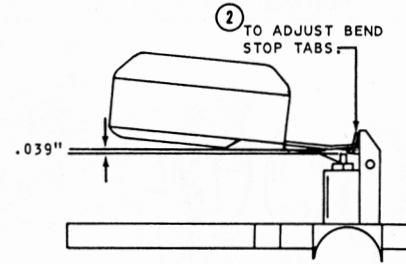
CAUTION: DO NOT EXERT  
PRESSURE ON RESILIENT  
NEEDLE VALVE.



- ① BOWL COVER INVERTED, FLOAT RESTING ON NEEDLE OF ITS OWN WEIGHT. MEASURE DISTANCE BETWEEN FLOAT AT TOE END AND CASTING SURFACE.

DRY FLOAT LEVEL ADJUSTMENT

FIG. 1



- ① BOWL COVER INVERTED. RAISE FLOAT BY HAND UNTIL IT CONTACTS FLOAT HANGER. MEASURE DISTANCE BETWEEN NEEDLE VALVE AND FLOAT TAB.

FLOAT DROP ADJUSTMENT

FIG. 2