

THROTTLE BODY GASKET PACK

SERVICE INSTRUCTION WORKSHEET

GF5258

TO REPAIR

ISUZU

I-TEC

THROTTLE BODY

1. Carefully read the text in the following paragraphs to become familiar with the contents of this worksheet before performing throttle body overhaul.

2. The exploded view shown is typical of the model throttle body this kit will service. The view may differ slightly from the actual throttle body being overhauled.

3. Use the exploded view as a guide. The numerical sequence may generally be followed to disassemble the T.B.I. unit far enough to permit cleaning and inspection.

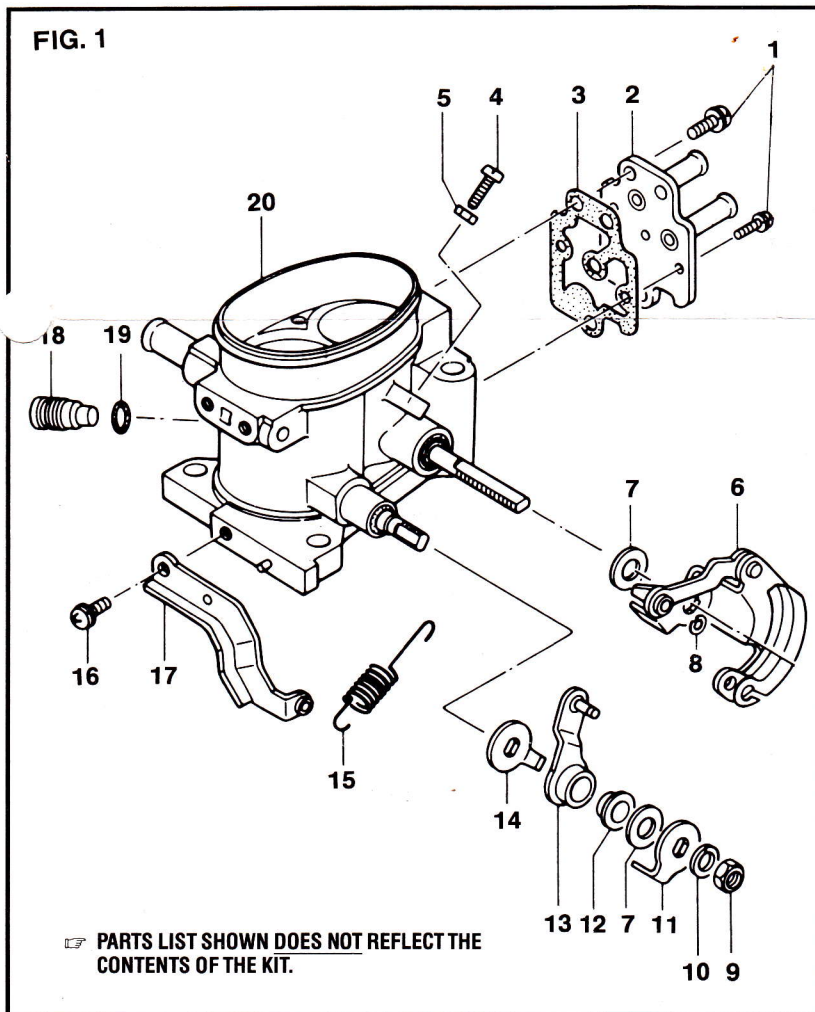
4. Reassemble in reverse order.

5. Cleaning must be done with throttle body disassembled. Cover opening on intake manifold after removing the throttle body assembly. Caution: Do not soak the throttle body (20) in any cleaning solvent. This can cause damage to seals and bearings. Also, do not soak rubber or plastic parts.

Use spray cleaner and a stiff bristle brush to remove dirt and carbon deposit. Do not use abrasives and wire to clean parts and passageways. After cleaning, wash off in suitable solvent and clear out passages with compressed air.

6. Parts list does not reflect the contents of the kit.

TYPICAL ILLUSTRATION



PARTS LIST

1. Screw; throttle valve cover
2. Cover; throttle valve
3. Gasket
4. Adjustment screw
5. Nut; adjustment screw
6. Primary lever; throttle
7. Nylon washer
8. Snap ring
9. Nut; throttle lever
10. Lock washer
11. Lever; kick down
12. Bushing
13. Lever; down shift
14. Secondary lever; throttle
15. Main spring
16. Screw; spring hook
17. Spring hook
18. Screw; idle adjustment
19. O ring; idle adjustment screw
20. Throttle valve assembly

PRECAUTION

- THE COMPONENTS AND CONNECTORS IN THE I-TEC SYSTEM ARE VERY SENSITIVE TO SHOCK, DISTORTION AND WATER. TURN IGNITION OFF BEFORE DISCONNECTING ANY ELECTRICAL CONNECTORS.
- ENSURE ALL FUEL HOSES ARE TIGHT AND IN GOOD CONDITION. CHECK FUEL LINES AND HOSES FOR CORROSION, CRACKS OR OTHER DAMAGES.

