

INSTALL/REMOVAL INSTRUCTIONS: WINDOW REGULATOR

ATTENTION: Refer to the appropriate shop manual for your vehicle to obtain specific service procedures for this part. If you do not have a service manual or lack the skill to install this part, it is recommended that you seek the services of a qualified technician. Pay special attention to all cautions and warnings included in the shop manual. Read and follow all instructions carefully.

REMOVAL/INSTALL OF WINDOW REGULATOR (665-4376) Ford Focus 2000–2007

General Tech Tips:

- Use painter's tape rather than duct tape to secure window. It will not damage paint or leave sticky residue.
- A plastic pry tool is useful. It will not easily damage delicate trim like a screwdriver or metal pry bar.
- The replacement regulator should have a liberal amount of grease on slide area. If there is not much grease present, white lithium grease works well to lubricate the slide area.
- Aftermarket window tinting can cause the window to travel slower and put additional strain on the window regulator assembly.
- Window run channels should be cleaned and lubricated before installation of a new window regulator assembly. Silicone spray works well.

**PLEASE WEAR SAFETY
GLASSES!**

Tools required for removal and installation of window regulator and motor assembly:

- **Silicone spray lubricant**
- **Panel retainer remover**
- **Magnet**
- **Pick**
- **T-20 Torx socket or driver**
- **1/4" socket or driver**
- **6mm socket or driver**
- **5/16" or 8mm socket or driver**
- **Punch**
- **Tape to hold window**
- **Small hammer**
- **Flat-blade screwdriver or plastic pry tool**



Disclaimer:

Even though every attempt is made to ensure this information is complete and accurate, it is impossible to account for all possible circumstances or situations. Please consult with a qualified auto technician before attempting to perform any work you are not qualified to do. Automobiles can be hazardous to work on; be sure to take all necessary safety precautions. Failure to do so may result in property damage or personal injury. Certain motor vehicle standards and performance requirements may apply to your motor vehicle (such as Federal Motor Vehicle Safety Standards by the National Highway Traffic Safety Administration). Be sure that your work is performed in accordance with such standards and that you do not disable any motor vehicle safety feature.

©2011 Dorman Products, Inc.

No reproductions in whole or in part without prior written approval.

INSTALL/REMOVAL INSTRUCTIONS: WINDOW REGULATOR

ATTENTION: Refer to the appropriate shop manual for your vehicle to obtain specific service procedures for this part. If you do not have a service manual or lack the skill to install this part, it is recommended that you seek the services of a qualified technician. Pay special attention to all cautions and warnings included in the shop manual. Read and follow all instructions carefully.

Removal Instructions

STEP 1: Gain access to the Window Regulator assembly by removing the interior trim panel.



STEP 1a: Gently pry underneath plastic triangular trim piece in upper right-hand corner above trim panel. Remove trim piece.



STEP 1b: Gently pry underneath door handle trim piece and remove trim piece. A plastic pry tool is recommended to protect the trim. Remove the two 1/4" screws that hold the door handle to the door. A magnet is helpful for retrieving the screws once they are loosened.



Disclaimer:

Even though every attempt is made to ensure this information is complete and accurate, it is impossible to account for all possible circumstances or situations. Please consult with a qualified auto technician before attempting to perform any work you are not qualified to do. Automobiles can be hazardous to work on; be sure to take all necessary safety precautions. Failure to do so may result in property damage or personal injury. Certain motor vehicle standards and performance requirements may apply to your motor vehicle (such as Federal Motor Vehicle Safety Standards by the National Highway Traffic Safety Administration). Be sure that your work is performed in accordance with such standards and that you do not disable any motor vehicle safety feature.

©2011 Dorman Products, Inc.

No reproductions in whole or in part without prior written approval.

INSTALL/REMOVAL INSTRUCTIONS: WINDOW REGULATOR

ATTENTION: Refer to the appropriate shop manual for your vehicle to obtain specific service procedures for this part. If you do not have a service manual or lack the skill to install this part, it is recommended that you seek the services of a qualified technician. Pay special attention to all cautions and warnings included in the shop manual. Read and follow all instructions carefully.

STEP 1c: Use a pick to remove the small circular button under the door handle that covers the screw holding the door handle to the door. Remove the screw using a T-20 Torx socket or driver.



STEP 1d: Gently pry underneath the door handle and switch trim bezel and remove bezel. Unplug switch and set bezel aside.



STEP 1e: Remove the six T-20 Torx screws that secure the door trim panel to the door.



Remove the six T-20 Torx screws that are located where the arrows point

Disclaimer:

Even though every attempt is made to ensure this information is complete and accurate, it is impossible to account for all possible circumstances or situations. Please consult with a qualified auto technician before attempting to perform any work you are not qualified to do. Automobiles can be hazardous to work on; be sure to take all necessary safety precautions. Failure to do so may result in property damage or personal injury. Certain motor vehicle standards and performance requirements may apply to your motor vehicle (such as Federal Motor Vehicle Safety Standards by the National Highway Traffic Safety Administration). Be sure that your work is performed in accordance with such standards and that you do not disable any motor vehicle safety feature.

©2011 Dorman Products, Inc.

No reproductions in whole or in part without prior written approval.

INSTALL/REMOVAL INSTRUCTIONS: WINDOW REGULATOR

ATTENTION: Refer to the appropriate shop manual for your vehicle to obtain specific service procedures for this part. If you do not have a service manual or lack the skill to install this part, it is recommended that you seek the services of a qualified technician. Pay special attention to all cautions and warnings included in the shop manual. Read and follow all instructions carefully.

STEP 1f: Remove the interior door panel by lifting from the bottom and pushing upward to lift off of door lip.



STEP 2: Remove the side impact bolster by twisting it clockwise to disengage the three plastic retainer hooks from the door panel.



Disclaimer:

Even though every attempt is made to ensure this information is complete and accurate, it is impossible to account for all possible circumstances or situations. Please consult with a qualified auto technician before attempting to perform any work you are not qualified to do. Automobiles can be hazardous to work on; be sure to take all necessary safety precautions. Failure to do so may result in property damage or personal injury. Certain motor vehicle standards and performance requirements may apply to your motor vehicle (such as Federal Motor Vehicle Safety Standards by the National Highway Traffic Safety Administration). Be sure that your work is performed in accordance with such standards and that you do not disable any motor vehicle safety feature.

©2011 Dorman Products, Inc.

No reproductions in whole or in part without prior written approval.

INSTALL/REMOVAL INSTRUCTIONS: WINDOW REGULATOR

ATTENTION: Refer to the appropriate shop manual for your vehicle to obtain specific service procedures for this part. If you do not have a service manual or lack the skill to install this part, it is recommended that you seek the services of a qualified technician. Pay special attention to all cautions and warnings included in the shop manual. Read and follow all instructions carefully.

STEP 3: Remove the speaker by removing the four 6mm screws that hold it to the door panel. Unplug electrical connector and set speaker aside.



STEP 4: Remove the interior door handle by unsnapping it from the door frame. Insert panel retainer tool or flat blade screwdriver underneath the center of the door handle bezel and carefully pry until the retainer unsnaps from the door frame. The handle completely separates from the door frame by then sliding forward (towards the car) to disengage the rear clip.



Disclaimer:

Even though every attempt is made to ensure this information is complete and accurate, it is impossible to account for all possible circumstances or situations. Please consult with a qualified auto technician before attempting to perform any work you are not qualified to do. Automobiles can be hazardous to work on; be sure to take all necessary safety precautions. Failure to do so may result in property damage or personal injury. Certain motor vehicle standards and performance requirements may apply to your motor vehicle (such as Federal Motor Vehicle Safety Standards by the National Highway Traffic Safety Administration). Be sure that your work is performed in accordance with such standards and that you do not disable any motor vehicle safety feature.

©2011 Dorman Products, Inc.

No reproductions in whole or in part without prior written approval.

INSTALL/REMOVAL INSTRUCTIONS: WINDOW REGULATOR

ATTENTION: Refer to the appropriate shop manual for your vehicle to obtain specific service procedures for this part. If you do not have a service manual or lack the skill to install this part, it is recommended that you seek the services of a qualified technician. Pay special attention to all cautions and warnings included in the shop manual. Read and follow all instructions carefully.

STEP 5: Remove foam vapor barrier by peeling away from door frame. A putty knife may help if it does not peel off easily. There is one plastic side bolster retainer that needs to be removed prior to completely removing vapor barrier. Remove retainer by inserting panel retainer tool underneath and prying it out. Once vapor barrier is removed, set aside being careful not to get black sealant on clothes or interior of car. It is very difficult to remove from cloth. Sealant can be removed from metal surfaces with some gum cutter or a similar chemical. Check to make sure the chemical will not damage the paint surface.



STEP 6: Plug the window switch back into vehicle connector. If the Window Regulator still operates, it is helpful to move the Regulator up and down using the switch. If the Window Regulator operates, move the Window Regulator slider until it aligns with the oval hole in the door frame. (See Photos on Following Page).

STEP 7: If the Window Regulator does not operate or is bound up, you may need to cut the Window Regulator cable in order to maneuver the slider into position. Be sure to fully support the window glass before cutting the cable so that it does not fall and break. Cut the cable using a heavy duty cable cutter. After cable is cut, move the slider until it aligns with the oval hole in the door frame. You will have to then support the window in this position using a helper or tape. (See Photos on Following Page).

Disclaimer:

Even though every attempt is made to ensure this information is complete and accurate, it is impossible to account for all possible circumstances or situations. Please consult with a qualified auto technician before attempting to perform any work you are not qualified to do. Automobiles can be hazardous to work on; be sure to take all necessary safety precautions. Failure to do so may result in property damage or personal injury. Certain motor vehicle standards and performance requirements may apply to your motor vehicle (such as Federal Motor Vehicle Safety Standards by the National Highway Traffic Safety Administration). Be sure that your work is performed in accordance with such standards and that you do not disable any motor vehicle safety feature.

INSTALL/REMOVAL INSTRUCTIONS: WINDOW REGULATOR

ATTENTION: Refer to the appropriate shop manual for your vehicle to obtain specific service procedures for this part. If you do not have a service manual or lack the skill to install this part, it is recommended that you seek the services of a qualified technician. Pay special attention to all cautions and warnings included in the shop manual. Read and follow all instructions carefully.

STEP 8: With the slider aligned with the door frame hole, you should see a circular plastic retainer with another smaller retainer inside of it. This setup goes through the holes in the Window Regulator slider as well as the hole in the window glass to secure the glass to the slider. The smaller pin pushes into the larger retainer and spreads it apart to make a tight fit against the slider and the glass. For reference, look at the replacement Window Regulator to visualize the slider to glass fitment. In order to separate the window glass from the Window Regulator slider, you need to push the center pin out of the larger retainer and then push the larger retainer out of the slider and window glass. Using a small hammer and a punch, tap the small pin out first and then tap the larger retainer out of the slider and window glass. These will fall into the door frame. Retrieve these pieces as you will need them to reattach the replacement Window Regulator. The Window Regulator should now be free from the window glass.



Line slide holes up with oval door frame hole



Outer and inner retainer pieces – use punch to tap out

STEP 9: Use the window switch or manually move the window glass into the full upright position. Secure the window glass to the door frame using tape. Painter's tape works well because it will not damage the door paint or leave a sticky residue.



Disclaimer:

Even though every attempt is made to ensure this information is complete and accurate, it is impossible to account for all possible circumstances or situations. Please consult with a qualified auto technician before attempting to perform any work you are not qualified to do. Automobiles can be hazardous to work on; be sure to take all necessary safety precautions. Failure to do so may result in property damage or personal injury. Certain motor vehicle standards and performance requirements may apply to your motor vehicle (such as Federal Motor Vehicle Safety Standards by the National Highway Traffic Safety Administration). Be sure that your work is performed in accordance with such standards and that you do not disable any motor vehicle safety feature.

©2011 Dorman Products, Inc.

No reproductions in whole or in part without prior written approval.

INSTALL/REMOVAL INSTRUCTIONS: WINDOW REGULATOR

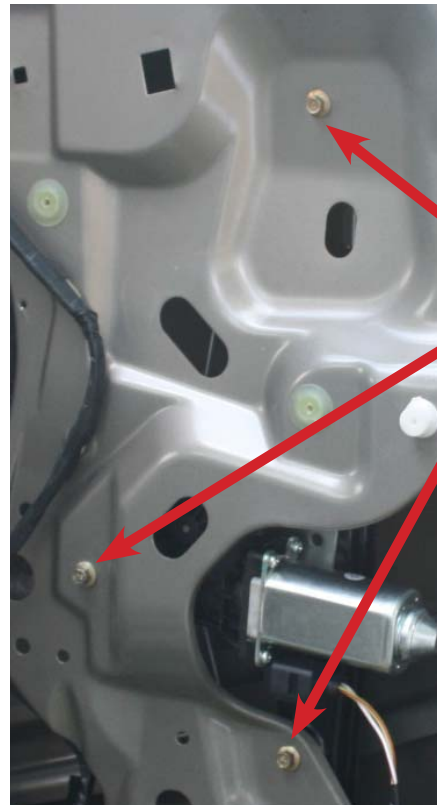
ATTENTION: Refer to the appropriate shop manual for your vehicle to obtain specific service procedures for this part. If you do not have a service manual or lack the skill to install this part, it is recommended that you seek the services of a qualified technician. Pay special attention to all cautions and warnings included in the shop manual. Read and follow all instructions carefully.

STEP 10: Unplug the window lift motor connector. It may be helpful to use a pick to disengage the clip holding the connector to the window lift motor.



Clip to disengage connector.
Use a pick to help disconnect.

STEP 11: Remove the three 8mm (5/16") bolts that hold the Window Regulator to the door frame. Remove the Window Regulator from the vehicle.



Remove
these 8mm
(5/16") bolts

STEP 12: The door is now ready for the installation of the replacement part.

Disclaimer:

Even though every attempt is made to ensure this information is complete and accurate, it is impossible to account for all possible circumstances or situations. Please consult with a qualified auto technician before attempting to perform any work you are not qualified to do. Automobiles can be hazardous to work on; be sure to take all necessary safety precautions. Failure to do so may result in property damage or personal injury. Certain motor vehicle standards and performance requirements may apply to your motor vehicle (such as Federal Motor Vehicle Safety Standards by the National Highway Traffic Safety Administration). Be sure that your work is performed in accordance with such standards and that you do not disable any motor vehicle safety feature.

©2011 Dorman Products, Inc.

No reproductions in whole or in part without prior written approval.

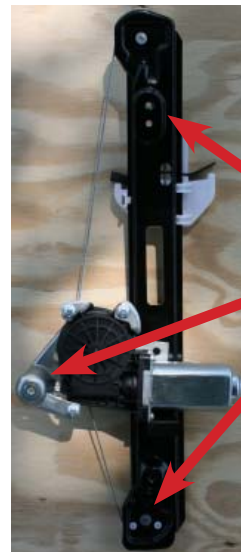
INSTALL/REMOVAL INSTRUCTIONS: WINDOW REGULATOR

ATTENTION: Refer to the appropriate shop manual for your vehicle to obtain specific service procedures for this part. If you do not have a service manual or lack the skill to install this part, it is recommended that you seek the services of a qualified technician. Pay special attention to all cautions and warnings included in the shop manual. Read and follow all instructions carefully.

Installation Instructions

STEP 1: Position Window Regulator in door frame and line up bolt holes. Install the three 8mm bolts that were removed and tighten evenly.

Line up this hole with hole in window glass



Threaded mounting holes

STEP 2: Reconnect the window lift motor electrical plug.

Disclaimer:

Even though every attempt is made to ensure this information is complete and accurate, it is impossible to account for all possible circumstances or situations. Please consult with a qualified auto technician before attempting to perform any work you are not qualified to do. Automobiles can be hazardous to work on; be sure to take all necessary safety precautions. Failure to do so may result in property damage or personal injury. Certain motor vehicle standards and performance requirements may apply to your motor vehicle (such as Federal Motor Vehicle Safety Standards by the National Highway Traffic Safety Administration). Be sure that your work is performed in accordance with such standards and that you do not disable any motor vehicle safety feature.

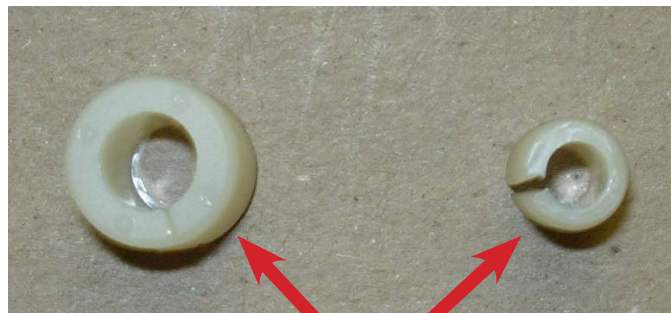
©2011 Dorman Products, Inc.

No reproductions in whole or in part without prior written approval.

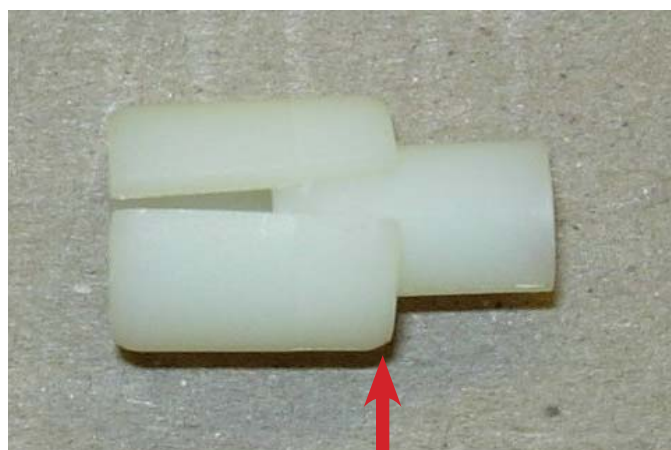
INSTALL/REMOVAL INSTRUCTIONS: WINDOW REGULATOR

ATTENTION: Refer to the appropriate shop manual for your vehicle to obtain specific service procedures for this part. If you do not have a service manual or lack the skill to install this part, it is recommended that you seek the services of a qualified technician. Pay special attention to all cautions and warnings included in the shop manual. Read and follow all instructions carefully.

STEP 3: Position the window glass so that you can access the hole in it that is used to secure it to the window Regulator slider. You will need to access the hole in the glass from inside the door frame, not through the small hole that you tapped the retainer out. You may need to move the Regulator slider out of the way and or move the glass into a different position. If you do move the glass, make sure to secure it before going forward. With the glass in the position that you need, push the pin into the larger retainer just enough to hold it in place. Insert the retainer into the Window glass and center it. Push the pin all the way into the retainer to spread it apart and hold it tight against window glass. Make sure the retainer stays centered in the window hole. The window glass is now ready to be attached to the Regulator slider. If plastic retainer is missing or damaged, a replacement is available from Ford. The part number is: XW4Z-54234A44-AA. The new retainers come in one piece. You have to cut the new one in half with a razor knife before installing.



Outer and inner retainer pieces



Push inner pin into retainer just enough to hold in place

STEP 4: Move the window glass into the Window Regulator slider. Once the holes in the slider are aligned with the plastic retainer, the glass and the slider should snap together in place. Wiggle the window glass around making sure that they are secured. Using the window switch, move the window up and down to make sure everything functions properly. Lubricate the window run channels with silicone spray as you are operating the window up and down.

STEP 5: Park the window in the full upright position and unplug the window switch. Set window switch and bezel aside.

Disclaimer:

Even though every attempt is made to ensure this information is complete and accurate, it is impossible to account for all possible circumstances or situations. Please consult with a qualified auto technician before attempting to perform any work you are not qualified to do. Automobiles can be hazardous to work on; be sure to take all necessary safety precautions. Failure to do so may result in property damage or personal injury. Certain motor vehicle standards and performance requirements may apply to your motor vehicle (such as Federal Motor Vehicle Safety Standards by the National Highway Traffic Safety Administration). Be sure that your work is performed in accordance with such standards and that you do not disable any motor vehicle safety feature.

©2011 Dorman Products, Inc.

No reproductions in whole or in part without prior written approval.

INSTALL/REMOVAL INSTRUCTIONS: WINDOW REGULATOR

ATTENTION: Refer to the appropriate shop manual for your vehicle to obtain specific service procedures for this part. If you do not have a service manual or lack the skill to install this part, it is recommended that you seek the services of a qualified technician. Pay special attention to all cautions and warnings included in the shop manual. Read and follow all instructions carefully.

STEP 6: Replace the foam vapor barrier. Make sure to snap the plastic clip that was removed back into place.

STEP 7: Reinstall the interior door handle by sliding the rear clip (away from car) into place and then snapping the front clip in place against the door frame.

STEP 8: Reinstall the speaker by reconnecting the electrical plug and then reinstalling the four 6mm screws that were removed

STEP 9: Reinstall the side impact bolster by lining up the three plastic retainer hooks and then twisting clockwise to seat properly.

STEP 10: Reinstall the interior door panel by catching the top on the lip of the door frame and then pushing downward so that the screw holes line up with the plastic blocks that they screw into. Make sure that the window switch electrical plug is protruding through the proper hole and is not trapped by the panel.

STEP 11: Reinstall the two 1/4" screws that go through the door handle and tighten. Snap door handle cover in place.

STEP 12: Reconnect the window switch electrical connector and snap window switch/door handle bezel in place. Reinstall the T-20 Torx screw that holds the bezel in place and tighten. Snap plastic button over screw.

STEP 13: Reinstall the six T-20 Torx screws that hold the door panel to the door frame.

STEP 14: Reinstall triangular trim piece by snapping back into place.

We appreciate your opinions regarding this product!
Please call our technical assistant with any challenges or suggestions
regarding the installation or operation of this product.

1-800-523-2492

Disclaimer:

Even though every attempt is made to ensure this information is complete and accurate, it is impossible to account for all possible circumstances or situations. Please consult with a qualified auto technician before attempting to perform any work you are not qualified to do. Automobiles can be hazardous to work on; be sure to take all necessary safety precautions. Failure to do so may result in property damage or personal injury. Certain motor vehicle standards and performance requirements may apply to your motor vehicle (such as Federal Motor Vehicle Safety Standards by the National Highway Traffic Safety Administration). Be sure that your work is performed in accordance with such standards and that you do not disable any motor vehicle safety feature.

©2011 Dorman Products, Inc.

No reproductions in whole or in part without prior written approval.