

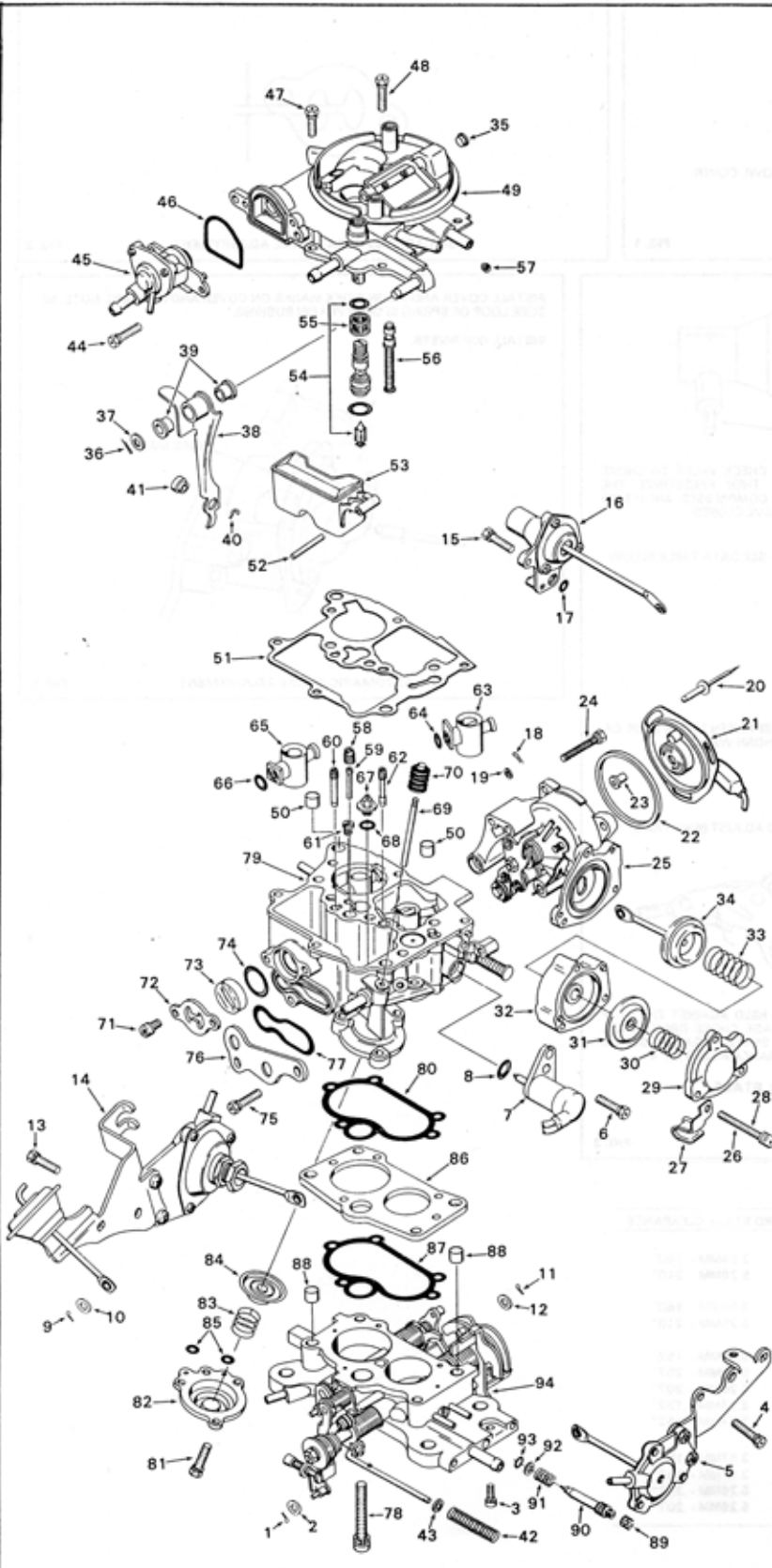
INSTRUCTION SHEET

OFF VEHICLE CARBURETOR SERVICE (HONDA CIVIC) KEIHIN CARBURETOR

50-675-2

1984-86

GENERAL EXPLODED VIEW
THE GENERAL DESIGN AND PARTS SHOWN WILL VARY TO
INDIVIDUAL UNITS COVERED ON THIS INSTRUCTION SHEET.



DISASSEMBLY

USE THE EXPLODED VIEW AS A GUIDE. THE NUMERICAL SEQUENCE MAY GENERALLY BE FOLLOWED TO DISASSEMBLE UNIT FAR ENOUGH TO PERMIT CLEANING AND INSPECTION. NOTE: TO REMOVE CHOKE COVER USE A 5/32" DRILL AND DRILL OFF RIVET HEADS AND PUNCH OUT REMAINDER OF RIVET. TO REMOVE FLOAT PIN, CAREFULLY SUPPORT SHORT BOSS (FLOAT PIN SUPPORT) USING A 1/16" PUNCH AND HAMMER TAP PIN TOWARDS SHORT BOSS. IF POWER PISTON IS REMOVED CAREFULLY REMOVE STAKING FOR EASIER REMOVAL. TO REMOVE VENTURI'S, CAREFULLY LOOSEN SET SCREWS IN SIDE OF BOWL. RECORD SIZES OF JETS (BELOW) FOR PROPER REASSEMBLY. IDLE MIXTURE NEEDLE BEFORE REMOVING, TURN IN COUNTING THE NUMBER OF TURNS IT IS FROM THE SEATED POSITION.

NOMENCLATURE

REF. NO.	REF. NO.
1. COTTER PIN-I. C. ROD	47. SCREW & LOCKWASHER (4)-BOWL COVER
2. WASHER-I. C. ROD	48. SCREW & LOCKWASHER (2)-LONG BOWL COVER
3. SCREW-I. C. BRACKET	49. BOWL COVER ASSEMBLY
4. SCREW (2)-I. C. BRACKET	50. GUIDE BUSHINGS (2)-BOWL COVER
5. IDLE CONTROLLER DIAPHRAGM & BRACKET ASSEMBLY (A/C)	51. GASKET-BOWL COVER
6. SCREW & LOCKWASHER-SOLENOID	52. PIN-FLOAT
7. SOLENOID ASSY.-IDLE CUT OFF	53. FLOAT ASSEMBLY
8. O-RING-SOLENOID MOUNTING	54. NEEDLE & SEAT ASSEMBLY W/O-RINGS
9. COTTER PIN-T. C. ROD	55. SCREEN-NEEDLE SEAT
10. WASHER-T. C. ROD	56. PISTON ASSEMBLY-POWER
11. COTTER PIN-DASHPOT ROD	57. JET-PRI. MAIN WELL AIR BLEED
12. WASHER-DASHPOT ROD	58. JET-AUXILIARY AIR BLEED
13. SCREW & LOCKWASHER (2)-BRACKET	59. TUBE-AUXILIARY EMULSION
14. DASHPOT, THROTTLE CONTROLLER ASSEMBLY & BRACKET	60. JET-SECONDARY SLOW
15. SCREW (2)-CHOKE OPENER	61. JET-SECONDARY SLOW AIR BLEED
16. CHOKE OPENER DIAPHRAGM ASSY.	62. JET-PRIMARY SLOW
17. O-RING-CHOKE OPENER	63. VENTURI-PRIMARY
18. COTTER PIN-CHOKE ROD	64. O-RING-PRI. VENTURI
19. WASHER-CHOKE ROD	65. VENTURI-SECONDARY
20. POP RIVETS (3)-CHOKE RETAINER	66. O-RING-SECONDARY VENTURI
21. CHOKE COVER & RETAINER ASSY.	67. POWER VALVE
22. GASKET-CHOKE COVER	68. O-RING-POWER VALVE
23. PLASTIC BUSHING-CHOKE LEVER	69. ROD-PUMP
24. SCREW & LOCKWASHER (3)-CHOKE HOUSING	70. BOOT-PUMP ROD
25. CHOKE HOUSING ASSEMBLY	71. SCREW & LOCKWASHER (2)-PLATE
26. SCREW & LOCKWASHER-WIRE CLAMP	72. PLATE-BOWL WINDOW
27. CLAMP-WIRE LOOM	73. WINDOW-FUEL LEVEL
28. SCREW & LOCKWASHER (2)-COVER	74. O-RING-WINDOW SEAL
29. COVER-UNLOADER	75. SCREW & LOCKWASHER (2)-COVER
30. SPRING-DIAPHRAGM	76. COVER-MAIN JET
31. DIAPHRAGM-F. I. UNLOADER (OUTER)	77. O-RING-MAIN JET COVER
32. HOUSING-FAST IDLE UNLOADER	78. SCREW & LOCKWASHER (4)-THROTTLE BODY
33. SPRING-F. I. DIAPHRAGM	79. BOWL ASSEMBLY
34. DIAPHRAGM-F. I. UNLOADER (INNER)	80. O-RING SEAL-BOWL TO SPACER
35. PLUG (RUBBER)-CHOKE SHAFT	81. SCREW & LOCKWASHER (3)-COVER
36. COTTER PIN-PUMP LEVER	82. COVER-PUMP DIAPHRAGM
37. WASHER-PUMP LEVER	83. SPRING-DIAPHRAGM RETURN
38. LEVER-PUMP	84. DIAPHRAGM-PUMP
39. BUSHING (2)-PUMP LEVER	85. O-RING (2)-PUMP PASSAGE
40. RETAINER-PUMP ROD	86. SPACER-THROTTLE BODY
41. BUSHING RETAINER-ROD SPRING	87. O-RING SEAL-SPACER
42. SPRING-PUMP ROD	88. GUIDE BUSHINGS (2)-SPACER/THROTTLE BODY
43. WASHER-PUMP ROD SPRING	89. CAP-IDLE ADJUSTING NEEDLE
44. SCREW & LOCKWASHER (2)-BOWL VENT VALVE	90. NEEDLE-IDLE ADJUSTING
45. BOWL VENT VALVE ASSEMBLY	91. SPRING-IDLE NEEDLE
46. O-RING SEAL-BOWL VENT ASSY.	92. WASHER-IDLE NEEDLE
	93. O-RING-IDLE NEEDLE
	94. THROTTLE BODY ASSEMBLY

CLEANING

CLEANING MUST BE DONE WITH CARBURETOR DISASSEMBLED. CAUTION: DO NOT SOAK BOWL ASSEMBLY (79) BECAUSE PUMP BY PASS VALVE AND PUMP DISCHARGE CHECK ARE NOT REMOVABLE. FLUSH OUT ALL JET PASSAGES. SOAK PARTS LONG ENOUGH TO SOFTEN AND REMOVE ALL FOREIGN MATERIAL. DO NOT SOAK ANY ASSEMBLIES FOR A PROLONGED PERIOD OF TIME WITH PLASTIC PARTS THAT ARE NOT REMOVED. USE A CARBURETOR CLEANING SOLVENT (SPRAY CAN). MAKE CERTAIN THE THROTTLE BORES ARE FREE OF ALL CARBON DEPOSITS. WASH OFF IN SUITABLE SOLVENT. (FLUSH POWER PISTON GOOD IF NOT REMOVED). BLOW OUT ALL PASSAGES AND JETS IN CASTINGS WITH COMPRESSED AIR AND CHECK CAREFULLY TO INSURE THOROUGH CLEANING OF OBSCURE AREAS. CAUTION: DO NOT SOAK DIAPHRAGM OR SOLENOID ASSEMBLIES, CHOKE COVER, FLOAT OR PARTS MADE OF RUBBER IN ANY TYPE OF CLEANING SOLVENTS.

REASSEMBLY

REASSEMBLE IN REVERSE ORDER OF DISASSEMBLY. NOTE SPECIAL INSTRUCTIONS AND ADJUSTMENTS.

SOME O-RING REPLACEMENTS ARE NOT FORMED UNTIL INSTALLED ON CARBURETOR. USE AN ADHESIVE TO HELP RETAIN O-RINGS IN ASSEMBLY IF NEEDED.

SPECIAL INSTRUCTIONS

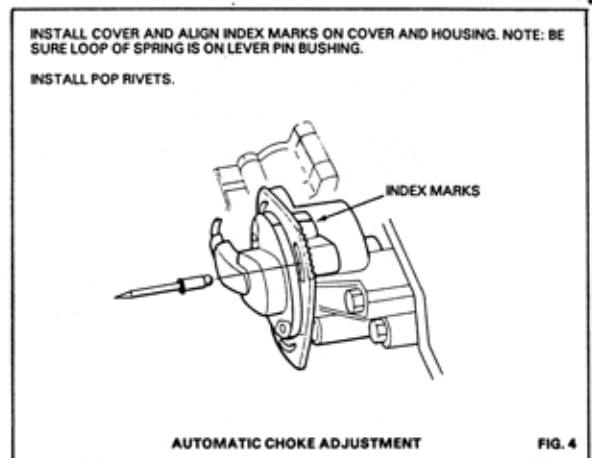
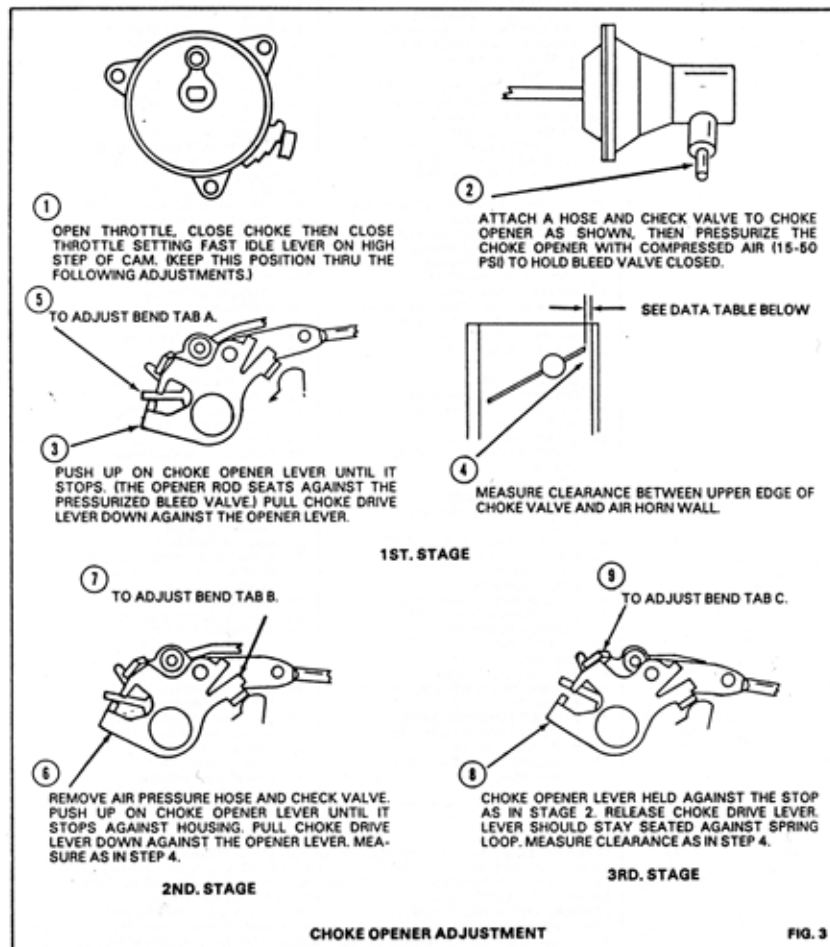
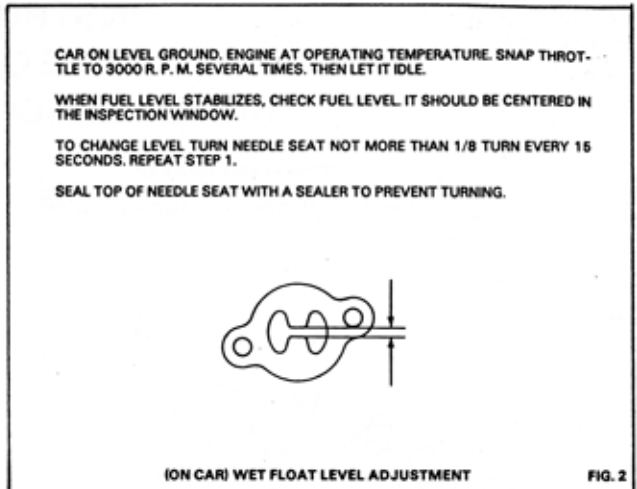
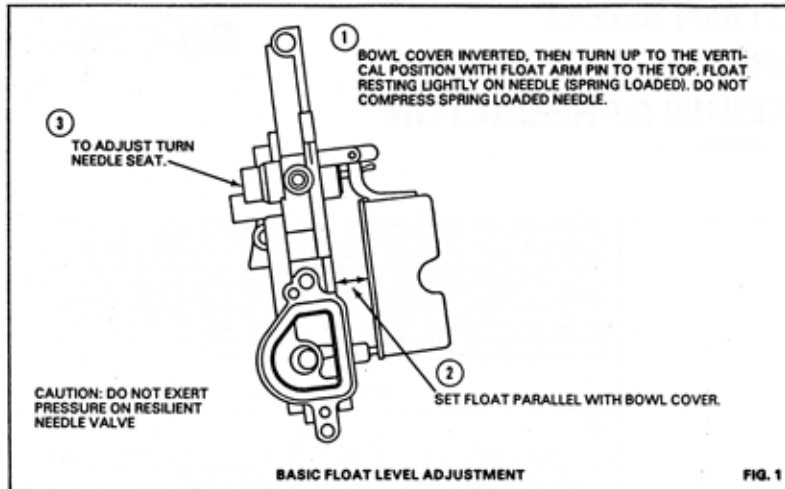
IDLE ADJUSTING NEEDLE (90)-TO INSTALL, FIRST ASSEMBLE SPRING (91), WASHER (92), AND O-RING (93) ON NEEDLE. TURN NEEDLE IN UNTIL LIGHTLY SEATED THEN BACK OUT TURNS RECORDED ON DISASSEMBLY. (DO NOT INSTALL CAP (89) AT THIS TIME).

NEEDLE & SEAT ASSEMBLY-AFTER FUEL LEVEL IS ADJUSTED, SEAL SCREW HEAD OF NEEDLE SEAT WITH A SEALER TO PREVENT TURNING.

CHOKE COVER ASSEMBLY-WHEN INSTALLING BE SURE LOOP END OF SPRING IS PLACED ON PLASTIC BUSHING OF LEVER. ALIGN INDEX MARKS AND SECURE WITH NEW RIVETS.

FOLLOW SERVICE MANUAL INSTRUCTIONS TO MAKE FINAL ADJUSTMENTS ON CAR.

ADJUSTMENTS



DATA TABLE
CHOKE OPENER/LINKAGE ADJUSTMENT

YEAR/MODEL	1ST STAGE CLEARANCE	2ND STAGE CLEARANCE	3RD STAGE CLEARANCE
1984			
1300	1.19MM - .047"	2.00MM - .079"	3.94MM - .160"
1500	1.44MM - .057"	2.00MM - .079"	5.28MM - .210"
1985			
1300/1500HF	1.19MM - .047"	2.00MM - .079"	3.94MM - .160"
1500	1.44MM - .057"	2.00MM - .079"	5.28MM - .210"
1986			
1300	1.02MM .040"	1.93MM - .076"	3.87MM - .152"
1500 M/T	1.27MM - .050"	1.93MM - .076"	5.26MM - .207"
1500 A/T	1.10MM - .043"	1.93MM - .076"	5.26MM - .207"
HF 49 ST.	.94MM - .037"	1.93MM - .076"	3.87MM - .152"
HF Cal. & Hi. Alt.	1.02MM - .040"	1.93MM .076"	3.87MM - .152"
1987			
1300 Calif. & Fed.	.84MM - .034"	1.93MM - .076"	3.87MM - .152"
Hi.-Alt.	1.02MM - .040"	1.93MM - .078"	3.87MM - .152"
1500 M/T	1.27MM - .050"	1.80MM - .071"	5.26MM - .207"
A/T	1.10MM - .043"	1.93MM - .076"	5.26MM - .207"