



**Made in USA  
Outerwear.**

**That's American.  
That's American Apparel®**



HVT401  
Heavy Terry  
Club Jacket

UNISEX  
XXS | XS | S | M | L | XL | 2XL\*

- Red
- Maroon
- Royal Blue
- Zinc
- Black



Stand up collar

Set-in sleeves

Nickel brass  
snap-button closures

New style

Matching dual  
side welt pockets

# Jackets



Flex  
Fleece

Heavy  
Terry

Wool

Heavy Terry	Color	71% Combed Cotton Fleece   29% Polyester	13 oz/yd <sup>2</sup> = 441 g/m <sup>2</sup>
	Zinc	65% Combed Cotton Fleece   28% Polyester   7% Rayon	11.28 oz/yd <sup>2</sup> = 382 g/m <sup>2</sup>
Flex Fleece		50% Combed Cotton Fleece   50% Polyester	8.2 oz/yd <sup>2</sup> = 278 g/m <sup>2</sup>

Wool	Exterior	80% New Wool   20% Nylon	13.50 oz/yd <sup>2</sup> = 458 g/m <sup>2</sup>
	Interior	52% Polyester   48% Viscose	5.74 oz/yd <sup>2</sup> = 195 g/m <sup>2</sup>

\*2XL available in select colors



RSAND401  
Denim Jacket

UNISEX  
XXS | XS | S | M | L | XL

- Resin Dark Wash Indigo
- Medium Stone Washed Indigo



5431  
California Fleece  
Zip Jogger

UNISEX  
S | M | L | XL | 2XL

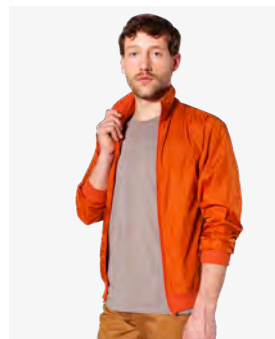
- Red
- Army
- Brown
- Navy
- Asphalt
- Black
- White



5455  
California Fleece  
Track Jacket

UNISEX  
XS | S | M | L | XL | 2XL

- Red | White
- Cranberry | White
- Brown | White
- Kelly Green | White
- Navy | White
- Asphalt | White
- Black | White



N431  
Nylon Taffeta  
Wind Breaker

UNISEX  
XS | S | M | L | XL

- Light Pink
- Citrus
- Burnt Orange
- Red
- Coffee Brown
- Kelly Green
- Dark Sea Green
- Navy
- Asphalt
- Black



F499  
Flex Fleece  
Club Jacket

UNISEX  
XXS | XS | S | M | L | XL | 2XL

- Cranberry
- Forest
- Navy
- Dark Heather Grey
- Black
- White

New Style



RSAWN402  
Wool Club Jacket  
with Leather Sleeves

UNISEX  
XXS | XS | S | M | L | XL | 2XL

- Black

New Style



RSAWN401  
Wool Club Jacket

UNISEX  
XXS | XS | S | M | L | XL | 2XL

- Oxford
- Black

New Style

California Fleece	100% Combed Cotton Fleece	7.2 oz/yd <sup>2</sup> = 244 g/m <sup>2</sup>
Nylon Taffeta	100% Nylon Taffeta	2.5 oz/yd <sup>2</sup> = 85 g/m <sup>2</sup>
Natural Denim	100% Cotton	14 oz/yd <sup>2</sup> = 475 g/m <sup>2</sup>

\*2XL available in select colors



F497  
Flex Fleece  
Zip Hoodie

UNISEX  
XXS | XS | S | M | L | XL | 2XL

- Neon Green
- Neon Yellow
- Neon Orange
- Neon Heather Pink
- Neon Heather Blue
- Sunshine
- Tang
- Mauve
- Deep Pink
- Red
- Dark Orchid
- Purple
- Mermaid Green
- Lapis
- Imperial Purple
- Navy
- Sea Blue
- Forest
- Ultra Blue
- Pewter
- Cranberry
- Truffle
- Brown
- Dark Heather Grey
- Slate
- Asphalt
- Black
- White
- Dark Heather Grey | Truffle
- Dark Heather Grey | Navy
- Dark Heather Grey | Black
- Navy | Red
- PV\* Green | P\* Lapis
- Dark Ash |
- Neon Yellow |
- Neon Heather Pink



Kangaroo pocket

Set-in sleeves

White Polyester drawcord

Metal zipper

F297 | YOUTH



F197 | KIDS



F097 | INFANTS



F997 | DOG



# Hoodies



New Style

F397  
Flex Fleece  
Crop Hoodie

WOMEN  
XS | S | M | L

- Menthe
- Neon Heather Pink
- Navy
- Dark Heather Grey
- Black
- White

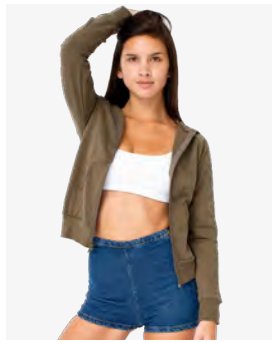


Flex Fleece 50% Combed Cotton Fleece | 50% Polyester 8.2 oz/yd<sup>2</sup> = 278 g/m<sup>2</sup>

\*P=Peppered, V=Vintage

\*XXS available in select colors





5399  
California Fleece Zip Hoodie

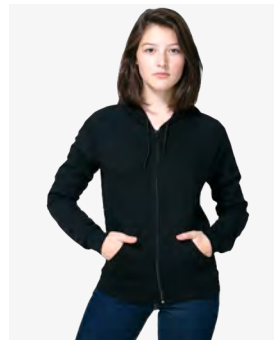
WOMEN  
XS | S | M | L | XL

- Red
- Army
- Brown
- Navy
- Heather Grey
- Asphalt
- Black
- White

5496  
California Fleece Sleeveless Zip Hoodie

UNISEX  
XS | S | M | L

- Slate
- Black



RSA2402  
Fine Jersey Zip Hoodie

UNISEX  
XS | S | M | L | XL

- Black
- White



RSAFS400  
Dov's Hoodie

UNISEX  
XS | S | M | L | XL

- Faded Camel
- Faded Red
- Faded Navy
- Faded Black
- Faded White



5497  
California Fleece Zip Hoodie

UNISEX  
S | M | L | XL | 2XL

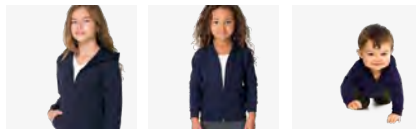
- Kelly Green
- Navy
- Red
- Brown
- Heather Grey
- Asphalt
- Black
- White



MT497  
Salt & Pepper Zip Hoodie

UNISEX  
XS | S | M | L | XL

- BP\* Cranberry
- BP\* Lapis
- Dark Ash
- Zinc
- Peppered Grey

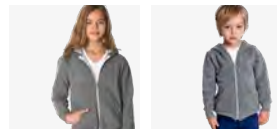


5297 | YOUTH

5197 | KIDS

5097 | INFANTS

- Navy
- Black
- White



MT297 | YOUTH

RSAMT197 | KIDS

- Peppered Grey



Fine Jersey

Tri-Blend

French Terry

Salt & Pepper



TRT497  
Tri-Blend Hoodie

UNISEX  
XS | S | M | L | XL

- Tri-Oatmeal
- Tri-Coffee
- Tri-Blue
- Tri-Vintage Green
- Tri-Navy
- Tri-Silver
- Tri-Black

Fine Jersey	100% Ring-Spun Combed Cotton	4.3 oz/yd <sup>2</sup> = 146 g/m <sup>2</sup>
Tri-Blend Terry	50% Polyester   42% Cotton   8% Rayon	9.2 oz/yd <sup>2</sup> = 312 g/m <sup>2</sup>
French Terry	70% Combed Cotton Fleece   30% Polyester	7.9 oz/yd <sup>2</sup> = 268 g/m <sup>2</sup>
California Fleece	100% Combed Cotton Fleece	7.2 oz/yd <sup>2</sup> = 244 g/m <sup>2</sup>

Mock Twist Fleece	50% Polyester   37% Combed Cotton Fleece   13% Rayon	8.4 oz/yd <sup>2</sup> = 284 g/m <sup>2</sup>
	Peppered	65% Polyester   35% Combed Cotton Fleece

\*BP=Brushed Peppered





5495  
**California Fleece Pullover Hoodie**

UNISEX  
XS | S | M | L | XL | 2XL

- Kelly Green
- Truffle
- Brown
- Navy
- Heather Grey
- Asphalt
- Black
- White



5398  
**California Fleece Pullover Raglan Hoodie Dress**

WOMEN  
ONE SIZE

- Evergreen
- Forest
- Purple
- Cranberry
- Navy
- Slate
- Black
- White



HVT427  
**Classic Crew Neck Sweatshirt**

UNISEX  
XS | S | M | L | XL | 2XL

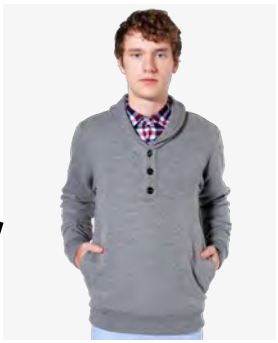
- Dark Navy
- Zinc



HVT316  
**Athletic Crop Sweatshirt**

WOMEN  
ONE SIZE

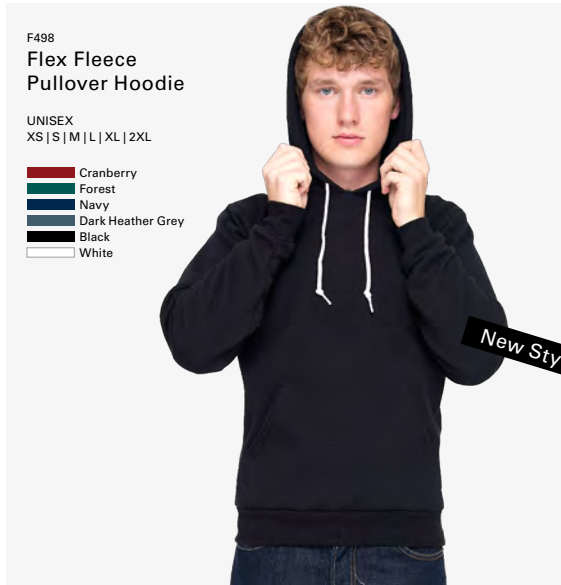
- Dark Navy
- Zinc



RSA0426  
**Shawl Collar Rugby**

UNISEX  
XS | S | M | L | XL

- Dark Navy
- Zinc



F498  
**Flex Fleece Pullover Hoodie**

UNISEX  
XS | S | M | L | XL | 2XL

- Cranberry
- Forest
- Navy
- Dark Heather Grey
- Black
- White



F496  
**Flex Fleece Drop Shoulder Pullover Crewneck Sweatshirt**

UNISEX  
XS | S | M | L | XL | 2XL

- Cranberry
- Forest
- Navy
- Dark Heather Grey
- Black
- White



RSAFS416  
**French Terry Drop Shoulder Sweatshirt**

UNISEX  
XS | S | M | L | XL

- Royal Blue Dark Ash
- Faded Navy
- Dark Ash
- Faded Black



5454  
**California Fleece Raglan**

UNISEX  
XS | S | M | L | XL | 2XL

- Camel
- Red
- Truffle
- Navy
- Heather Grey
- Black
- White

Also available in youth style RSA5254  
kids style RSA5154

HVT495  
**Heavy Terry Classic Pullover Hoodie**

UNISEX  
XS | S | M | L | XL | 2XL

- Dark Navy
- Zinc



# Pullover Sweatshirts

Heavy Terry	Color	71% Combed Cotton Fleece   29% Polyester	13 oz/yd <sup>2</sup> = 441 g/m <sup>2</sup>
	Zinc	65% Combed Cotton Fleece   28% Polyester   7% Rayon	11.28 oz/yd <sup>2</sup> = 382 g/m <sup>2</sup>
French Terry		70% Combed Cotton Fleece   30% Polyester	7.9 oz/yd <sup>2</sup> = 268 g/m <sup>2</sup>
California Fleece		100% Combed Cotton Fleece	7.2 oz/yd <sup>2</sup> = 244 g/m <sup>2</sup>





HVT450  
Heavy Terry  
Classic Sweatpant

UNISEX  
XS | S | M | L | XL | 2XL

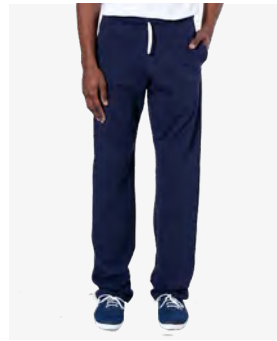
- Dark Navy
- Zinc



RSATT328  
Stretch Terry  
Winter Leggings

WOMEN  
XS | S | M | L | XL

- Charcoal
- Black



5450  
California Fleece  
Slim Fit Pant

UNISEX  
XS | S | M | L | XL

- Navy
- Heather Grey
- Asphalt
- Black
- White



5300  
California  
Fleece Pant

WOMEN  
XS | S | M | L | XL

- Navy
- Asphalt
- Black
- White

Also available in youth style 5250,  
kids style 5100 and infants style 5000



RSAF400  
Flex Fleece  
Sweatpant

UNISEX  
XS | S | M | L | XL

- Deep Pink
- Red
- Cranberry
- Purple
- Imperial Purple
- Mermaid Green
- Lapis
- Navy
- Dark Heather Grey
- Black
- White

# Bottoms

Heavy Terry	Color	71% Combed Cotton Fleece   29% Polyester	13 oz/yd <sup>2</sup> = 441 g/m <sup>2</sup>
	Zinc	65% Combed Cotton Fleece   28% Polyester   7% Rayon	11.28 oz/yd <sup>2</sup> = 382 g/m <sup>2</sup>
Flex Fleece		50% Combed Cotton Fleece   50% Polyester	8.2 oz/yd <sup>2</sup> = 278 g/m <sup>2</sup>
California Fleece		100% Combed Cotton Fleece	7.2 oz/yd <sup>2</sup> = 244 g/m <sup>2</sup>

Stretch Terry	Black	90% Cotton   10% Spandex	11 oz/yd <sup>2</sup> = 373 g/m <sup>2</sup>
	Charcoal	46% Cotton   43% Polyester   11% Spandex	11 oz/yd <sup>2</sup> = 373 g/m <sup>2</sup>



MT509  
Salt & Pepper Hat

UNISEX  
ONE SIZE

- Dark Ash
- Peppered Grey

- Cotton Twill sweatband
- Adjustable snap-back closure
- Six-panel
- Mid-profile

New Style



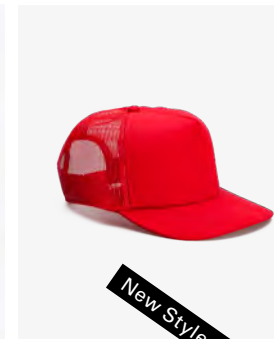
New Style

F509  
Flex Fleece Hat

UNISEX  
ONE SIZE

- Dark Heather Grey

- Cotton Twill sweatband
- Adjustable snap-back closure
- Six-panel
- Mid-profile



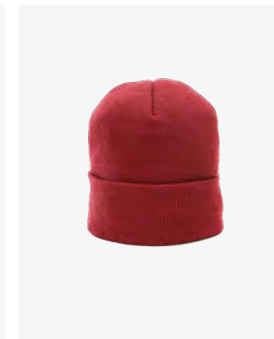
New Style

CT509  
Trucker Hat

UNISEX  
ONE SIZE

- Ivory
- Red
- Navy
- Black

- Five-panel
- Foam crown
- Mid-profile

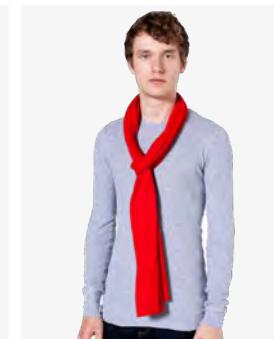


RSAKWBN-2  
Cuffed Acrylic  
Lined Beanie

UNISEX  
ONE SIZE

- Berry
- Forest
- Navy
- Light Grey
- Black

Dimensions: 9 1/2" x 8"  
(24.1cm x 20.3cm)



6445  
Sheer Jersey Scarf

UNISEX  
ONE SIZE

- Red
- Forest
- Evergreen
- Lapis
- Purple
- Navy
- Heather Grey
- Asphalt
- Black
- White



TR445  
Tri-Blend Scarf

UNISEX  
ONE SIZE

- Athletic Blue
- Tri-Coffee
- Athletic Grey
- Tri-Black



# Accessories

Mock-Twist Fleece	65% Polyester   35% Combed Cotton Fleece	8.4 oz/yd <sup>2</sup> = 284 g/m <sup>2</sup>
Flex Fleece	50% Combed Cotton Fleece   50% Polyester	8.2 oz/yd <sup>2</sup> = 278 g/m <sup>2</sup>
Trucker	100% Cotton Chino Twill   100% Polyester	8.5 oz/yd <sup>2</sup> = 288 g/m <sup>2</sup>
Acrylic	100% Acrylic	6.9 oz/yd <sup>2</sup> = 233 g/m <sup>2</sup>

Sheer Jersey	100% Ring-Spun Combed Cotton	3.8 oz/yd <sup>2</sup> = 129 g/m <sup>2</sup>
Tri-Blend Jersey	50% Polyester   25% Ring-Spun Combed Cotton   25% Rayon	3.7 oz/yd <sup>2</sup> = 125 g/m <sup>2</sup>

—United States / HQ  
747 Warehouse St.  
Los Angeles, CA 90021  
Tel: +1 (213) 488 0228  
Fax: +1 (213) 488 0334  
csr@americanapparel.net

—Canada  
1650 Metcalfe Room 704  
Montreal, QC H3A 1X6  
Tel: +1 (514) 940 1301  
Fax: +1 (514) 908 3884  
canadacsr@americanapparel.net

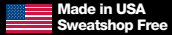
—United Kingdom  
3rd Floor / National House  
60-66 Wardour Street  
London W1F 0TA  
Tel: +44 (0) 207 440 3894  
Fax: +44 (0) 207 494 4478  
infouk@americanapparel.net

—Germany  
Zeilhof 10  
40221 Düsseldorf  
Germany  
Tel: +49 (0) 692 222 1314  
Fax: +49 (0) 211 305 4099  
euinfo@americanapparel.net

For all other international  
inquiries, please contact us  
at [csr@americanapparel.net](mailto:csr@americanapparel.net)

PPA: 223870—ASI: 35297  
SAGE: 66312

09/2013  
Printed with Pride in the USA  
©2013 American Apparel  
All rights reserved.



**American Apparel is Jobs.**  
At American Apparel we leverage art, design, innovation, and technology to advance our business. Our workers earn fair wages, pay millions of dollars in taxes, and have access to comprehensive medical programs.

[americanapparel.net/wholesale](http://americanapparel.net/wholesale)

## Wholesale Imprintable Division