

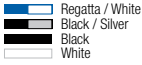
# **NEW STYLE GUIDE**

American Apparel



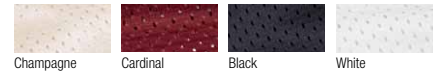
**NEW**

H458  
**Poly Mesh Athletic Tank**

UNISEX  
S / M / L / XL  

 Regatta / White  
 Black / Silver  
 Black  
 White

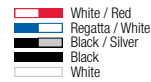
# ACTIVWEAR

Get physical in our new Mesh Activewear line. Designed with Polyester Athletic Mesh that is breathable, moisture-wicking and quick-drying. Developed for indoor/outdoor sports, crafted for active lifestyles, and formulated for comfort.

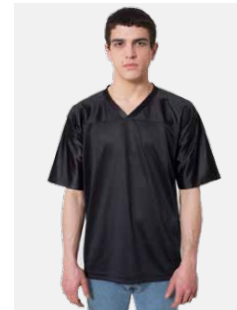


**NEW**

H424  
**Poly Mesh Athletic Tee**

UNISEX  
S / M / L / XL  

 White / Red  
 Regatta / White  
 Black / Silver  
 Black  
 White

A sporty mesh tee featuring reinforced stitching at the bottom hem and arm openings.



**NEW**

H418  
**Poly Mesh Football Jersey**

UNISEX  
XS / S / M / L / XL  


 Champagne  
 Cardinal  
 Navy  
 Black

This classic football jersey features a shiny Polyester Dazzle v-neckline upper body and a Poly Mesh torso.



**NEW**

RSA2419  
**Athletic Contrast Tee**

UNISEX  
XS / S / M / L / XL  

 Truffle  
 Black  
 White

An innovative tee featuring a ribbed neckline, Poly Mesh upper body and super-soft Cotton torso.

**POLY MESH**  
**POLY DAZZLE**

100% Polyester 3.3 oz/yd<sup>2</sup> (112 g/m<sup>2</sup>)  
100% Polyester 5.9 oz/yd<sup>2</sup> (200 g/m<sup>2</sup>)

# PERFORMANCE SPORTSWEAR

Feel the American Apparel difference. The Performance Sportswear Collection features flexible workout wear in functional, stylish cuts designed with high-performance nylon for maximum agility, support and sweat absorbency.



RSAAK300  
**Fitness Pant**

WOMEN  
XS / S / M / L

- Lipstick
- Royal Blue
- Alloy
- Black



RSAAK302  
**Motion Short**

WOMEN  
XS / S / M / L

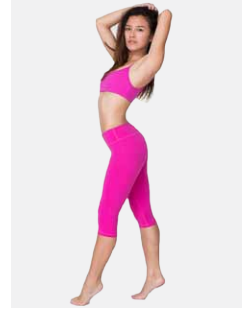
- Lipstick
- Royal Blue
- Alloy
- Black



RSAAK301  
**Sports Bra**

WOMEN  
XS / S / M / L

- Hot Fuchsia
- Lipstick
- Royal Blue
- US Navy
- Alloy
- Black
- White



RSAAK304  
**Knee Length Fitness Pant**

WOMEN  
XS / S / M / L

- Hot Fuchsia
- US Navy
- Alloy
- Black



**NEW**  
PDZ301  
**Poly Dazzle Running Short**

WOMEN  
XS / S / M / L

- Cardinal / Black
- Navy / White
- Black / White



8308  
**Cotton Spandex Tank Top**

WOMEN  
XS / S / M / L / XL / 2XL

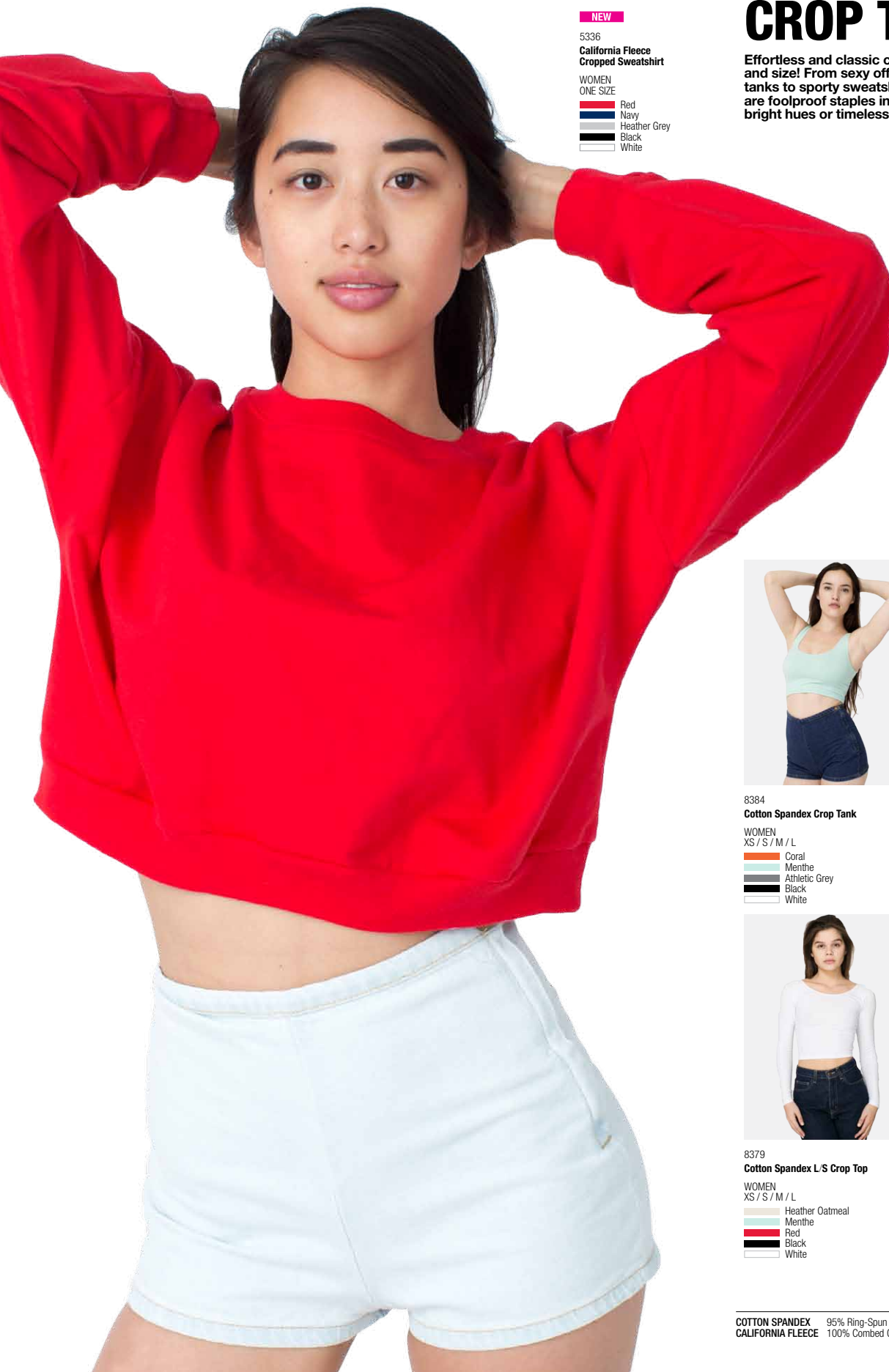
- Red
- Coral
- Mint
- Athletic Grey
- Black
- White



RSAGB300  
**Gabardine Tennis Skirt**

WOMEN  
XS / S / M / L

- American Beauty
- Patriot Blue
- Black
- White



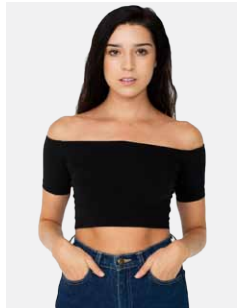
**NEW**

5336  
**California Fleece  
 Cropped Sweatshirt**

- WOMEN  
 ONE SIZE
- Red
  - Navy
  - Heather Grey
  - Black
  - White

# CROP TOPS

Effortless and classic crop tops in every silhouette and size! From sexy off-shoulder styles and fresh tanks to sporty sweatshirts, our selection of crop tops are foolproof staples in every girl's closet. Available in bright hues or timeless neutrals.



**NEW**

RSAB389  
**Cotton Spandex Off-Shoulder Crop Top**

- WOMEN  
 XS / S / M / L
- Black



8384  
**Cotton Spandex Crop Tank**

- WOMEN  
 XS / S / M / L
- Coral
  - Menthe
  - Athletic Grey
  - Black
  - White



8369  
**Cotton Spandex Sleeveless Crop Top**

- WOMEN  
 XS / S / M / L
- Nude
  - Boysenberry
  - Menthe
  - Black
  - White



8379  
**Cotton Spandex L/S Crop Top**

- WOMEN  
 XS / S / M / L
- Heather Oatmeal
  - Menthe
  - Red
  - Black
  - White



RSAB380  
**Cotton Spandex Crop Tee**

- WOMEN  
 XS / S / M / L
- Heather Oatmeal
  - Neon Yellow
  - Coral
  - Red
  - Truffie
  - Lapis
  - Mint



# BASEBALL TEE

A classic baseball tee constructed from sturdy thick-knit jersey featuring reinforced construction along the placket and neckline, double-needle detailing, full button closure and set-in sleeves for ultimate mobility.

**NEW**

1403  
**Thick Knit  
Baseball Tee**

UNISEX  
XS / S / M / L / XL

- Red
- Navy
- Black
- Heather Grey
- White



## COTTON BASICS

New styles, colors and sizes added to our far-from-basic Cotton collection, made from the softest 100% ring-spun combed Cotton on earth.

2011  
**Power Washed Tee**

UNISEX  
XS / S / M / L / XL / 2XL

- Crème
- Navy
- Butter
- Forest
- Beni Imo
- Lieutenant
- High Dive
- Pewter
- Red Punch
- New Silver
- Port
- Black
- Majesty
- White

RSA2404  
**Power Washed Color Block Tee**

UNISEX  
XS / S / M / L / XL

- Menthe / Summer Peach / Beni Imo
- Poppy / Purple / Malibu Green



2411  
**Power Washed Tank**

UNISEX  
XS / S / M / L / XL

- Coral
- High Dive
- Blue Whale
- Navy
- Black
- White

**OVER 20 COLORS**  
2408  
**Fine Jersey Tank**

UNISEX  
XS / S / M / L / XL / 2XL

- Sunshine
- White / Red
- Fuchsia
- Purple
- New Silver / Navy



**NEW**

2001TL  
**Fine Jersey  
Tall Tee**

UNISEX  
XS / S / M / L / XL

- Asphalt
- Black
- White

## TALL

Offers the same fit and feel as our top-selling 2001 Fine Jersey Tee but with 1 5/8" of added length.



**FINE JERSEY  
THICK KNIT JERSEY**

100% Ring-Spun Combed Cotton 4.3 oz/yd<sup>2</sup> (146 g/m<sup>2</sup>)  
50% Cotton / 50% Polyester 7.4 oz/yd<sup>2</sup> (251 g/m<sup>2</sup>)

Made in USA / 4










# TRI-BLEND


Tri-Oatmeal is now available in more styles!  
 Constructed from our signature blend of Polyester,  
 Cotton and Rayon that lends a lightweight, vintage-like  
 fit and feel that only gets better with time.



## TR497 Tri-Blend Hoodie


- UNISEX  
 XS / S / M / L / XL
-  Tri-Oatmeal
  -  Tri-Silver
  -  Tri-Blue
  -  Tri-Vintage Green
  -  Tri-Coffee
  -  Tri-Navy
  -  Tri-Black

## TR408 Tri-Blend Tank

- UNISEX  
 XS / S / M / L / XL
-  Tri-Oatmeal




TR301  
Tri-Blend S/S Women's Track Tee

- WOMEN  
 S / M / L / XL
-  Tri-Oatmeal



TR401  
Tri-Blend S/S Track Shirt

- UNISEX  
 XS / S / M / L / XL / 2XL
-  Tri-Oatmeal



TR308  
Tri-Blend Racerback Tank

- WOMEN  
 XS / S / M / L
-  Tri-Oatmeal

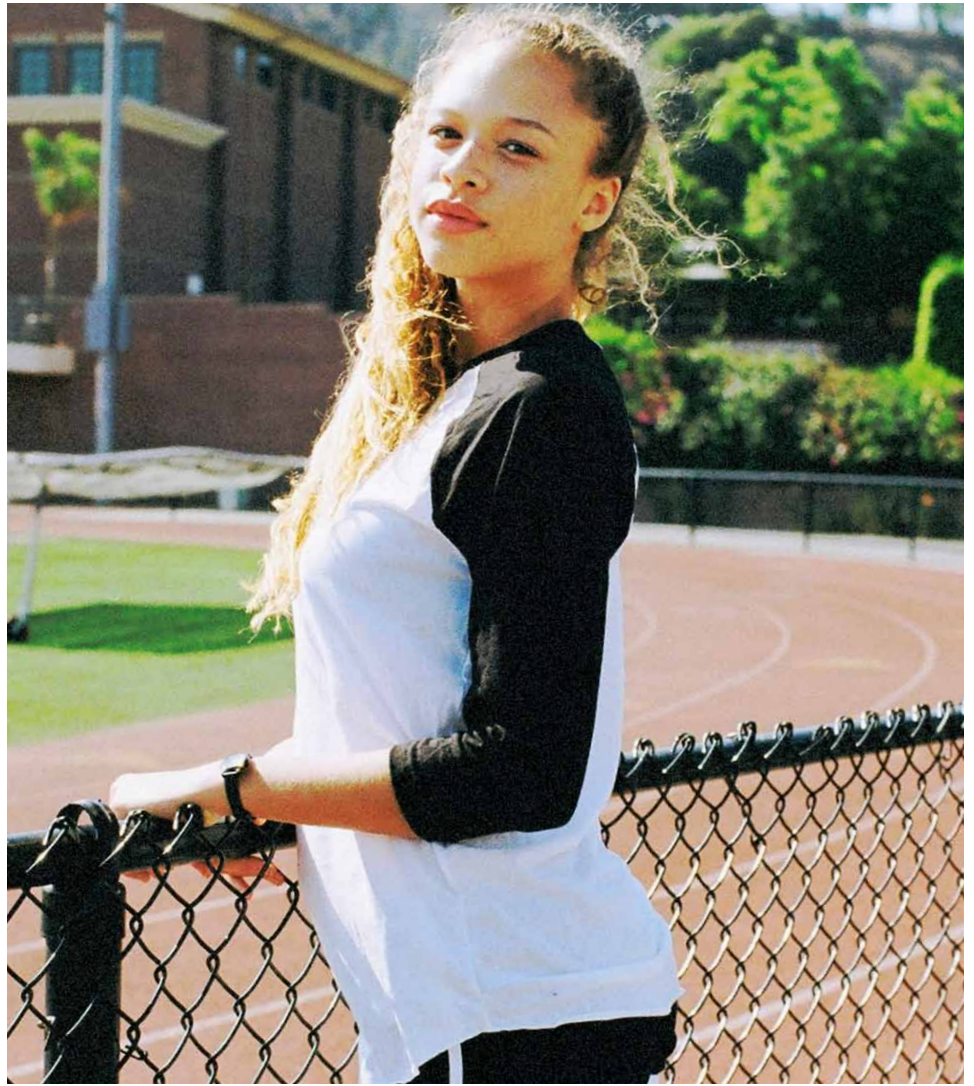


A top-selling style, featuring generously cut arm openings, a slim racerback cut and Merrow® stitch hemming.

TRI-BLEND JERSEY  
 TRI-BLEND TERRY

50% Polyester / 25% Ring-Spun Combed Cotton / 25% Rayon  
 50% Polyester / 42% Combed Cotton Fleece / 8% Rayon

# POLY-COTTON



PL408  
**Sublimation Tank**  
UNISEX  
XS / S / M / L / XL  
White



PL401  
**Sublimation Tee**  
UNISEX  
XS / S / M / L / XL / 2XL  
White



**NEW**  
PL101  
**Kids Sublimation Tee**  
KIDS  
2 / 4 / 6  
White



**NEW**  
PL201  
**Youth Sublimation Tee**  
YOUTH  
8 / 10 / 12  
White

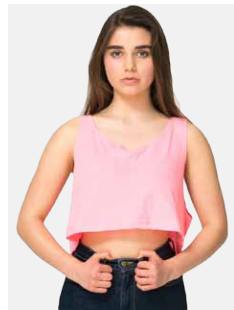
# SUBLIMATION

Make it one of a kind everytime.



NT301S  
**Sublimation Bikini Top**  
WOMEN  
S / M / L  
White / Black

NT307S  
**Sublimation Bikini Bottom**  
WOMEN  
S / M / L  
White / Black



RSABB381  
**Loose Crop Tank**  
WOMEN  
ONE SIZE  
Neon Yellow  
Neon Heather Orange  
Neon Heather Pink  
Neon Heather Blue  
Neon Green  
Black  
White



**OVER 15 COLORS**  
BB408  
**Poly-Cotton Tank**  
UNISEX  
XS / S / M / L / XL  
Neon Yellow  
Red  
Neon Heather Pink  
Heather Kelly Green  
Lapis



BB410  
**Poly-Cotton Ringer Tee**  
UNISEX  
XS / S / M / L / XL  
Black / White  
Heather Lake Blue / Navy  
Heather Red / Navy  
Navy / White  
White / Black  
White / Navy  
White / Red



**OVER 20 COLORS**  
BB453  
**Poly-Cotton 3/4 Sleeve Raglan Shirt**  
UNISEX  
XS / S / M / L / XL  
White / Neon Heather Orange  
White / Red  
Red / Navy  
White / Orchid  
White / Forest



# THE F-SERIES

Everyone's favorite fleece collection has expanded with the addition of new innovative styles and bright colors. Constructed from an equal blend of combed Cotton fleece and Polyester, this 8.2 oz fabric features a cozy interior and a soft fleece shell.

F397  
Cropped Flex Fleece Hoodie

- WOMEN  
XS / S / M / L
- Menthe
  - Neon Heather Pink
  - Navy
  - Dark Heather Grey
  - Black
  - White



F499  
Flex Fleece Club Jacket

A stylish club jacket featuring an eight-button closure, ribbed cuffs and neckband.

- UNISEX  
XXS / XS / S / M / L / XL / 2XL
- Cranberry
  - Navy
  - Forest
  - Dark Heather Grey
  - Black
  - White



F496  
Flex Fleece Crewneck Pullover  
Drop Shoulder Sweatshirt

F498  
Flex Fleece Drop Shoulder  
Pullover Hoodie

- UNISEX  
XXS / XS / S / M / L / XL / 2XL
- Cranberry
  - Navy
  - Forest
  - Dark Heather Grey
  - Black
  - White

- UNISEX  
XXS / XS / S / M / L / XL / 2XL
- Cranberry
  - Navy
  - Forest
  - Dark Heather Grey
  - Black
  - White



**OVER 30 COLORS**

F497  
Flex Fleece Zip Hoodie

- UNISEX  
XXS / XS / S / M / L / XL / 2XL
- Navy / Red
  - Dark Heather Grey / Truffle
  - Dark Heather Grey / Navy
  - Dark Heather Grey / Black

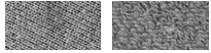
- Neon Yellow
- Neon Orange
- Neon Heather Pink
- Neon Heather Blue
- Neon Green
- Red
- Purple
- Lapis
- Mermaid Green
- Navy
- Dark Heather Grey





# HEAVY TERRY

13 ounces of style! The Heavy Terry Collection has expanded with the addition of bold new colors and classic styles, giving even more reasons to love our heaviest fleece yet.



Zinc / Exterior Zinc / Interior



**HVT401  
Heavy Terry Club Jacket**

UNISEX  
XXS / XS / S / M / L / XL / 2XL

- Red
- Maroon
- Royal Blue
- Zinc
- Black



**NEW**  
**HVT316  
Athletic Crop Sweatshirt**  
UNISEX  
XS / S / M / L / XL / 2XL  
WOMEN  
ONE SIZE  
Zinc



**HVT427  
Classic Crew Sweatshirt**  
UNISEX  
XS / S / M / L / XL / 2XL  
Truffle  
Dark Navy  
Zinc  
Black



**HVT450  
Classic Sweatpant**  
UNISEX  
XS / S / M / L / XL / 2XL  
Dark Navy  
Zinc  
Black



**HVT495  
Classic Pullover Hoodie**  
UNISEX  
XS / S / M / L / XL / 2XL  
Lapis  
Dark Navy  
Zinc  
Black



F197 / F297

**Flex Fleece Zip Hoodie**

- |           |                   |
|-----------|-------------------|
| KIDS      | YOUTH             |
| 2 / 4 / 6 | 8 / 10 / 12       |
|           | Neon Yellow       |
|           | Neon Heather Pink |
|           | Neon Heather Blue |
|           | Red               |
|           | Purple            |
|           | Lapis             |
|           | Navy              |
|           | Mermaid Green     |
|           | Dark Heather Grey |
|           | Black             |
|           | White             |

**NEW**

F101 / F201

**Flex Fleece Sweatshort**

- |           |                   |
|-----------|-------------------|
| KIDS      | YOUTH             |
| 2 / 4 / 6 | 8 / 10 / 12       |
|           | Red               |
|           | Lapis             |
|           | Mermaid Green     |
|           | Dark Heather Grey |
|           | White             |

# KIDS/YOUTH

We are always adding new styles and colors to accommodate everyone, including the little ones. The youth and kids collection continues to expand with new styles fashioned after top selling adult pieces.



BB108  
**Poly-Cotton Tank**

- |           |                     |
|-----------|---------------------|
| KIDS      | YOUTH               |
| 2 / 4 / 6 | 8 / 10 / 12         |
|           | Neon Yellow         |
|           | Neon Heather Orange |
|           | Neon Heather Pink   |
|           | Neon Heather Blue   |
|           | Neon Green          |
|           | Black               |
|           | White               |



BB208  
**Poly-Cotton Tank**

- |           |                     |
|-----------|---------------------|
| KIDS      | YOUTH               |
| 2 / 4 / 6 | 8 / 10 / 12         |
|           | Neon Yellow         |
|           | Neon Heather Orange |
|           | Neon Heather Pink   |
|           | Neon Heather Blue   |
|           | Neon Green          |
|           | Black               |
|           | White               |



BB153  
**Poly-Cotton 3/4 Sleeve Raglan**

- |           |                           |
|-----------|---------------------------|
| KIDS      | YOUTH                     |
| 2 / 4 / 6 | 8 / 10 / 12               |
|           | White / Neon Yellow       |
|           | White / Neon Heather Pink |
|           | White / Neon Heather Blue |
|           | White / Red               |
|           | White / Navy              |
|           | White / Black             |



BB253  
**Poly-Cotton 3/4 Sleeve Raglan**

- |           |                           |
|-----------|---------------------------|
| KIDS      | YOUTH                     |
| 2 / 4 / 6 | 8 / 10 / 12               |
|           | White / Neon Yellow       |
|           | White / Neon Heather Pink |
|           | White / Neon Heather Blue |
|           | White / Red               |
|           | White / Navy              |
|           | White / Black             |



BB101  
**Poly-Cotton S S Tee**

- |           |                     |
|-----------|---------------------|
| KIDS      | YOUTH               |
| 2 / 4 / 6 | 8 / 10 / 12         |
|           | Neon Yellow         |
|           | Neon Heather Orange |
|           | Neon Heather Pink   |
|           | Neon Heather Blue   |
|           | Neon Green          |
|           | Red                 |
|           | Pink                |
|           | Lapis               |
|           | Navy                |
|           | Brown               |
|           | Black               |
|           | White               |



BB201  
**Poly-Cotton S S Tee**

- |           |                     |
|-----------|---------------------|
| KIDS      | YOUTH               |
| 2 / 4 / 6 | 8 / 10 / 12         |
|           | Neon Yellow         |
|           | Neon Heather Orange |
|           | Neon Heather Pink   |
|           | Neon Heather Blue   |
|           | Neon Green          |
|           | Red                 |
|           | Pink                |
|           | Lapis               |
|           | Navy                |
|           | Brown               |
|           | Black               |
|           | White               |

FLEX FLEECE  
POLY-COTTON

50% Polyester / 50% Combed Cotton Fleece  
50% Polyester / 50% Ring-Spun Combed Cotton



RSATR194  
**Tri-Blend Raglan Pullover**

KIDS  
2 / 4 / 6

- Athletic Blue
- Tri-Indigo
- Tri-Evergreen
- Athletic Grey



RSATR294  
**Tri-Blend Raglan Pullover**

YOUTH  
8 / 10 / 12

- Athletic Blue
- Tri-Indigo
- Tri-Evergreen
- Athletic Grey



TR108  
**Tri-Blend Tank**

KIDS  
2 / 4 / 6

- Tri-Cranberry
- Tri-Indigo
- Tri-Orchid
- Tri-Evergreen
- Tri-Coffee
- Athletic Grey
- Tri-Black



RSATR208  
**Tri-Blend Tank**

YOUTH  
8 / 10 / 12

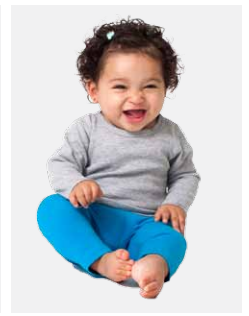
- Tri-Cranberry
- Tri-Indigo
- Tri-Orchid
- Tri-Evergreen
- Tri-Coffee
- Athletic Grey
- Tri-Black



TRO05  
**Tri-Blend S/S Tee**

INFANTS  
3-6 / 6-12 / 12-18 / 18-24

- Athletic Blue
- Tri-Indigo
- Athletic Grey
- Tri-Black



T007  
**Baby Thermal L/S Tee**

INFANTS  
3-6 / 6-12 / 12-18 / 18-24

- Light Pink
- Light Blue
- Heather Grey
- Black
- White

# INFANTS

Stylish, practical styles are now available for babies! Our Infant collection now includes new items like the lightweight Sheer Jersey t-shirt, designed with a looser neckline for easy on and off and the ultra-stretchy baby leggings, great for mixing and matching.



BB053  
**Poly-Cotton 3/4 Sleeve Raglan**

INFANTS  
3-6 / 6-12 / 12-18 / 18-24

- White / Neon Yellow
- White / Neon Heather Pink
- White / Neon Heather Blue
- White / Red
- White / Navy
- White / Black



6005  
**Sheer Jersey S/S Tee**

INFANTS  
3-6 / 6-12 / 12-18 / 18-24

- Sunshine
- Apricot
- New Silver
- Black
- White



8028  
**Cotton Spandex Jersey Legging**

INFANTS  
3-6 / 6-12 / 12-18 / 18-24

- Deep Pink
- Orchid
- Teal
- Black



F097  
**Flex Fleece Zip Hoodie**

INFANTS  
3-6 / 6-12 / 12-18 / 18-24

- Red
- Lapis
- Pewter
- Dark Heather Grey
- White

F082  
**Flex Fleece Pant**

INFANTS  
3-6 / 6-12 / 12-18 / 18-24

- Red
- Lapis
- Mermaid Green
- Dark Heather Grey
- White

# ACCESSORIES/PETS



E590  
**Bull Denim Woven Cotton Bag**

ONE SIZE  
Natural



PCS49  
**Poly-Cotton Tote Bag**

ONE SIZE  
Natural



BB953  
**Poly-Cotton 3/4 Sleeve Dog Raglan**

PETS  
XS / S / M / L / XL / 2XL

- White / Neon Heather Pink
- White / Neon Heather Blue
- Red / Navy
- White / Navy
- White / Black
- Black / White



F997  
**Flex Fleece Dog Zip Hoodie**

PETS  
XS / S / M / L / XL / 2XL

- Neon Orange
- Neon Heather Pink
- Neon Heather Blue
- Red
- Navy
- Forest
- Brown
- Pewter
- Black

You can order mill direct!

—United States / HQ

747 Warehouse St.  
Los Angeles, CA 90021  
Tel: +1 (213) 488 0226  
Fax: +1 (213) 488 0334  
csr@americanapparel.net

—Canada

1550 Metcalfe Room 704  
Montreal, QC H3A 1X6  
Tel: +1 (514) 940 1301  
Fax: +1 (514) 908 3884  
canadacsr@americanapparel.net

—United Kingdom

3rd Floor / National House  
60-66 Wardour Street  
London W1F 0TA  
Tel: +44 (0) 207 440 3894  
Fax: +44 (0) 207 494 4478  
infouk@americanapparel.net

—Germany

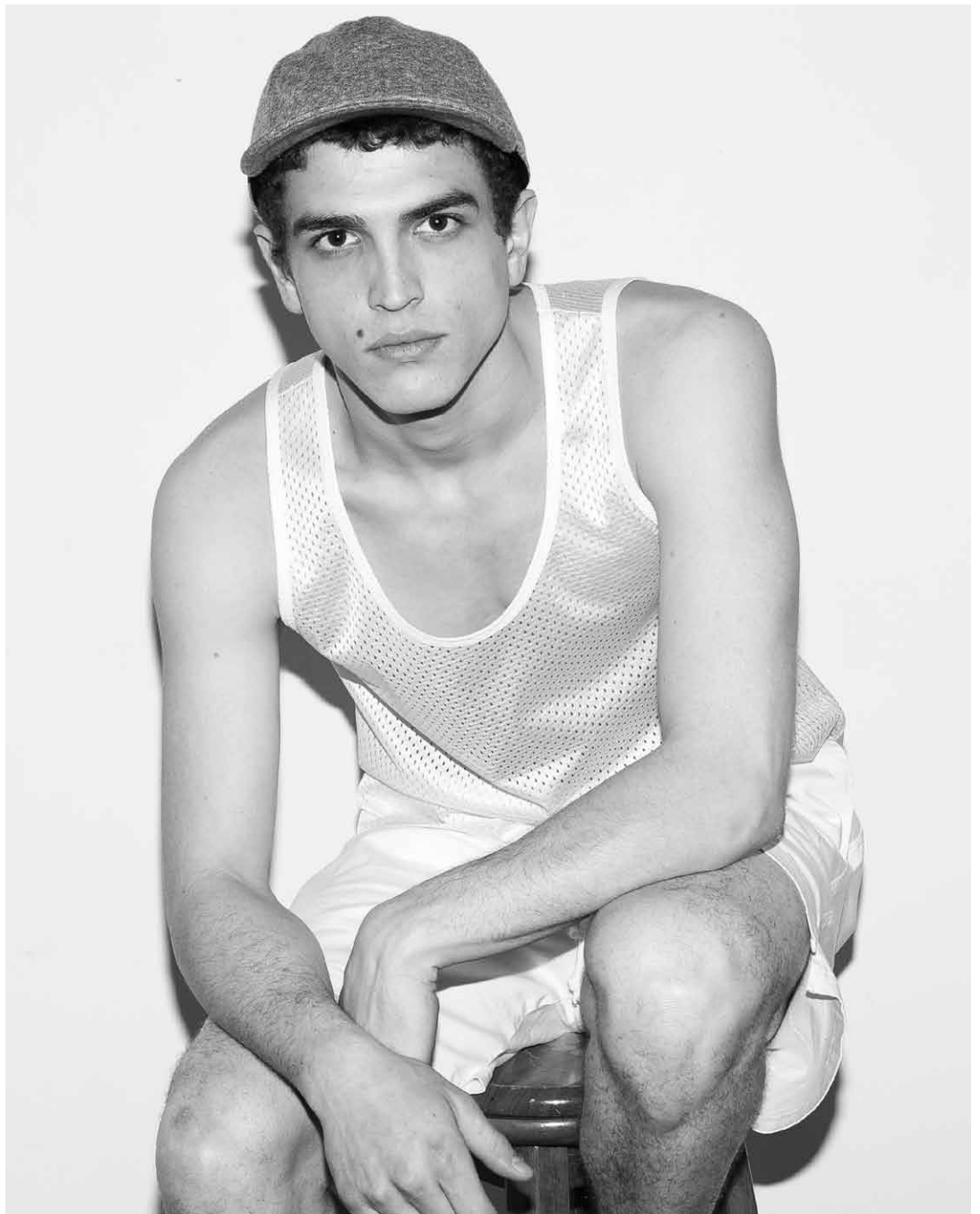
Zollhof 10  
40221 Düsseldorf  
Germany  
Tel: +49 (0) 692 222 1314  
Fax: +49 (0) 211 385 4099  
euinfo@americanapparel.net

For all other international inquiries, please contact us at csr@americanapparel.net

[americanapparel.net/wholesale](http://americanapparel.net/wholesale)

PPAI: 223870—ASI: 35297  
SAGE: 66312

05/2014  
Printed with Pride in the USA  
©2014 American Apparel  
All rights reserved.



CT509  
Trucker Hat

UNISEX  
OS  
Ivory  
Red  
Navy  
Black



F509  
Flex Fleece Hat

UNISEX  
OS  
Dark Heather Grey



MT509  
Salt and Pepper Hat

UNISEX  
OS  
Dark Ash  
Peppered Grey

 **Made in USA**  
Sweatshop Free

**Vision. Passion.**  
**Integrity. Brand-Free.**  
**Sustainability. Fair Wages.**  
**Solar Power. Recycling.**  
**Creativity. Can-Do-Sprit.**  
**Contrarian Thinking.**  
**That's American Apparel.**

**COTTON CHINO** 100% Cotton Chino Twill / 100% Polyester Mesh 8.5 oz/yd<sup>2</sup> (288 g/m<sup>2</sup>)  
**FLEX FLEECE** 50% Polyester / 50% Cotton Fleece 8.2 oz/yd<sup>2</sup> (278 g/m<sup>2</sup>)  
**MOCK TWIST FLEECE** 50% Polyester / 37% Cotton Fleece / 13% Rayon 8.4 oz/yd<sup>2</sup> (285 g/m<sup>2</sup>)